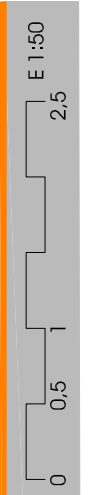
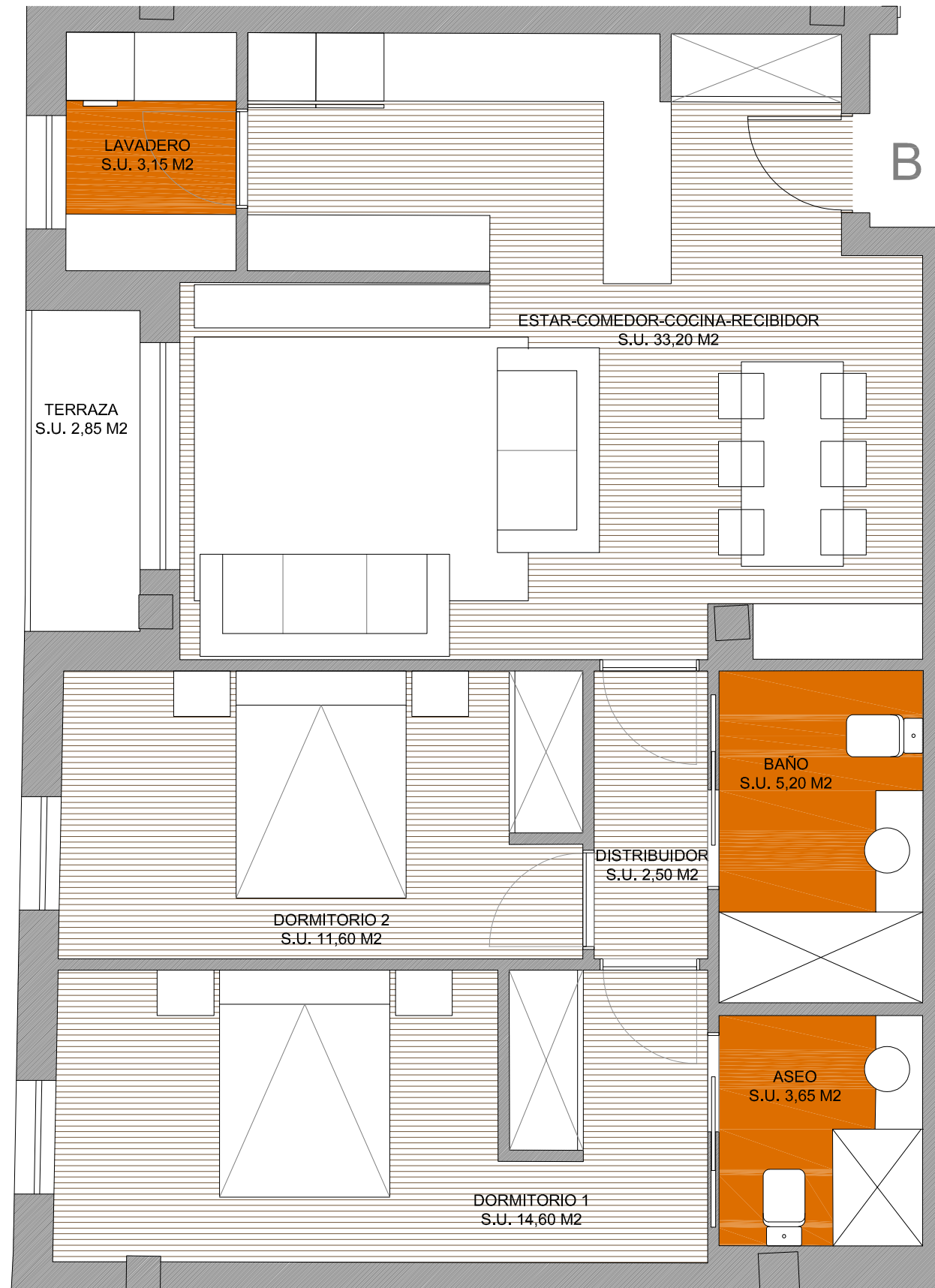


VIVIENDA 1B/2B

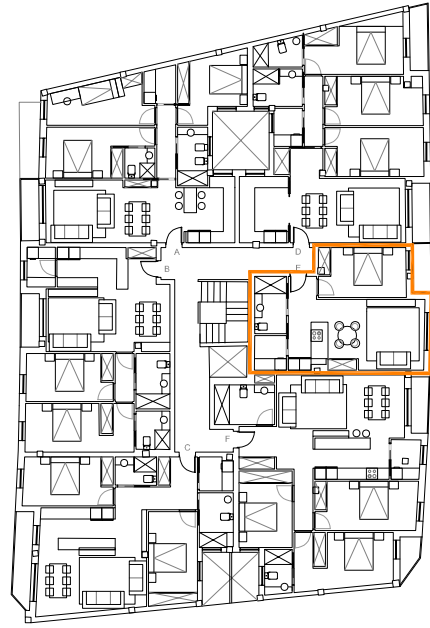
SUPERFICIES CONSTRUIDAS			
	CERRADA	ABIERTA	TOTAL
1B/2B	86,50	2,85	89,35 M2

SUPERFICIES UTIL			
	CERRADA	ABIERTA	TOTAL
1B/2B	73,90		



VIVIENDA : 1B /2B

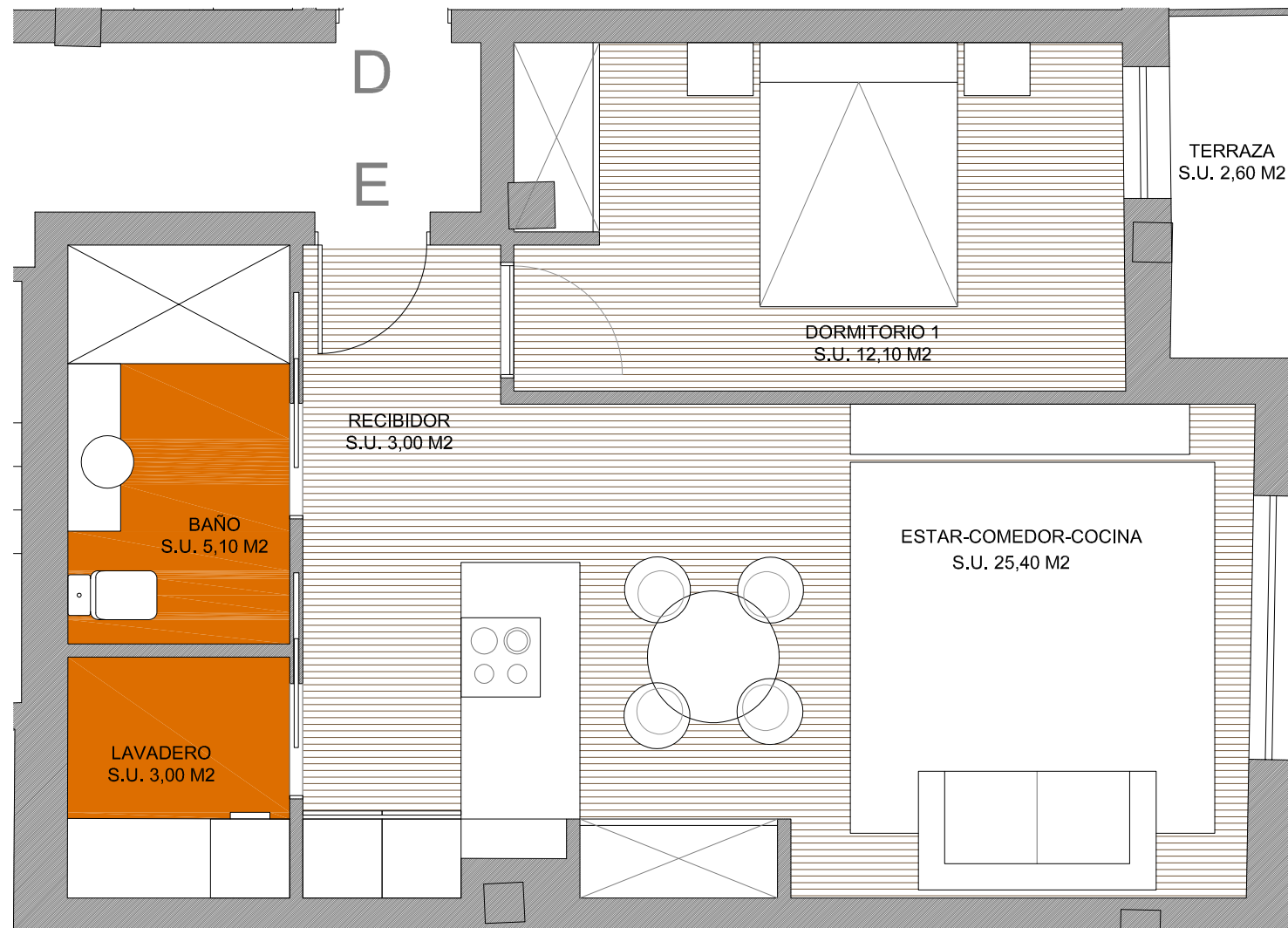
EDIFICIO DONA URRACA-SALVATERRA DE MIÑO



VIVIENDA 1E/2E

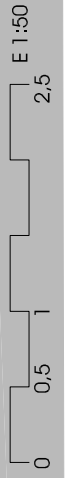
SUPERFICIES CONSTRUIDAS			
	CERRADA	ABIERTA	TOTAL
1-2 E	57,55	2,60	60,15 M2

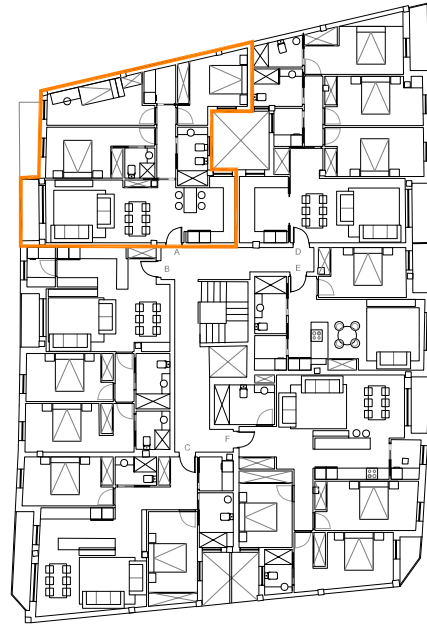
SUPERFICIES UTIL			
	CERRADA	ABIERTA	TOTAL
1-2 E	48,60		



VIVIENDA : 1E-2E

EDIFICIO DONA URRACA-SALVATERRA DE MIÑO

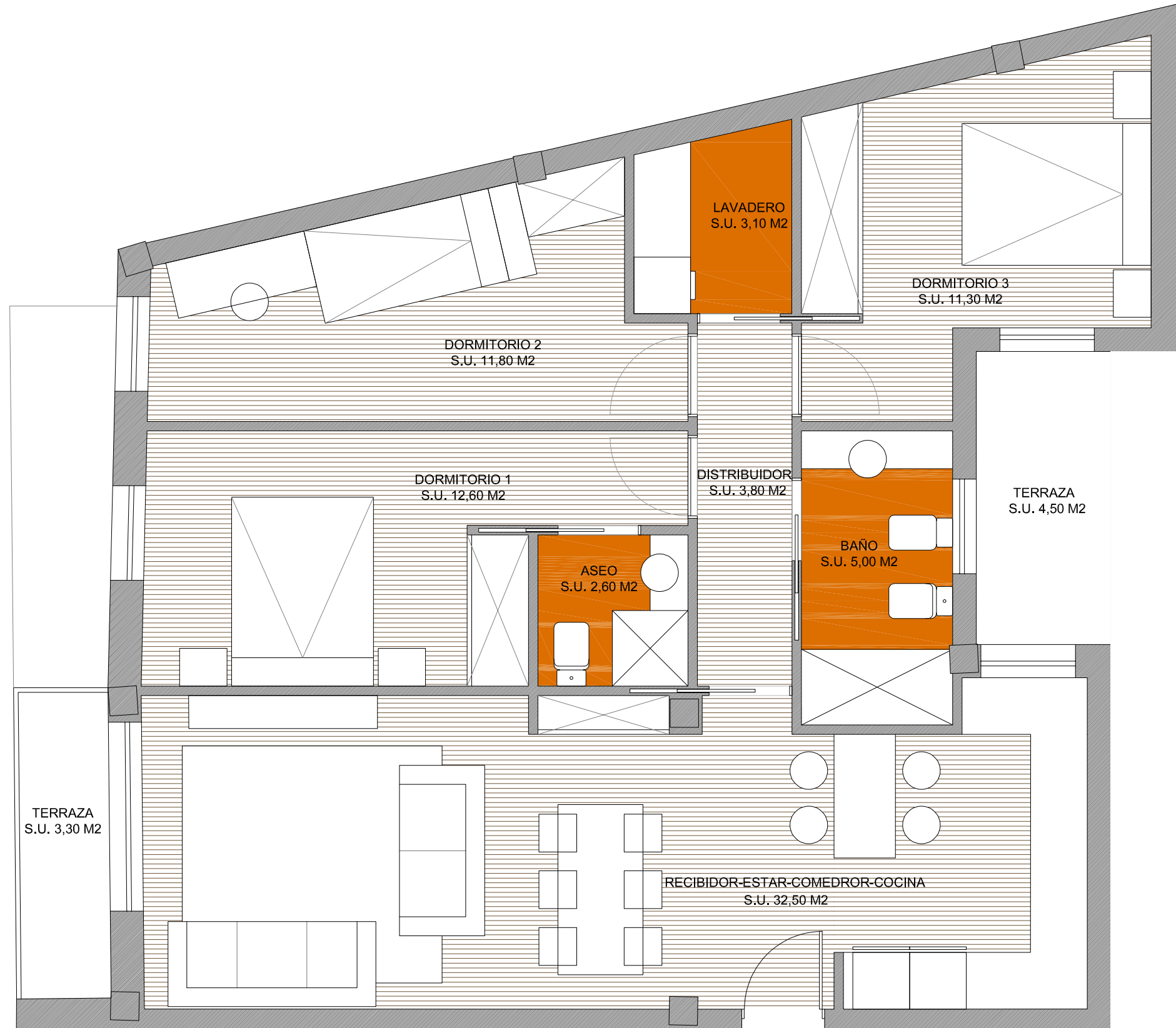




VIVIENDA 1A

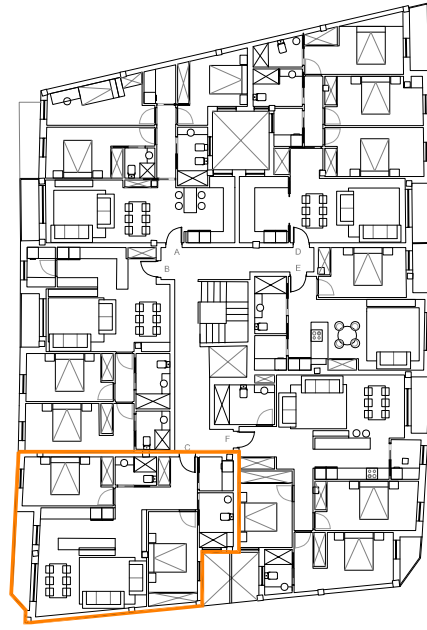
SUPERFICIES CONSTRUIDAS			
	CERRADA	ABIERTA	TOTAL
1A	96,25	3,30+4,50	104,05 M2

SUPERFICIES UTIL			
	CERRADA	ABIERTA	TOTAL
1A	82,70	3,30+4,50	



VIVIENDA : 1A

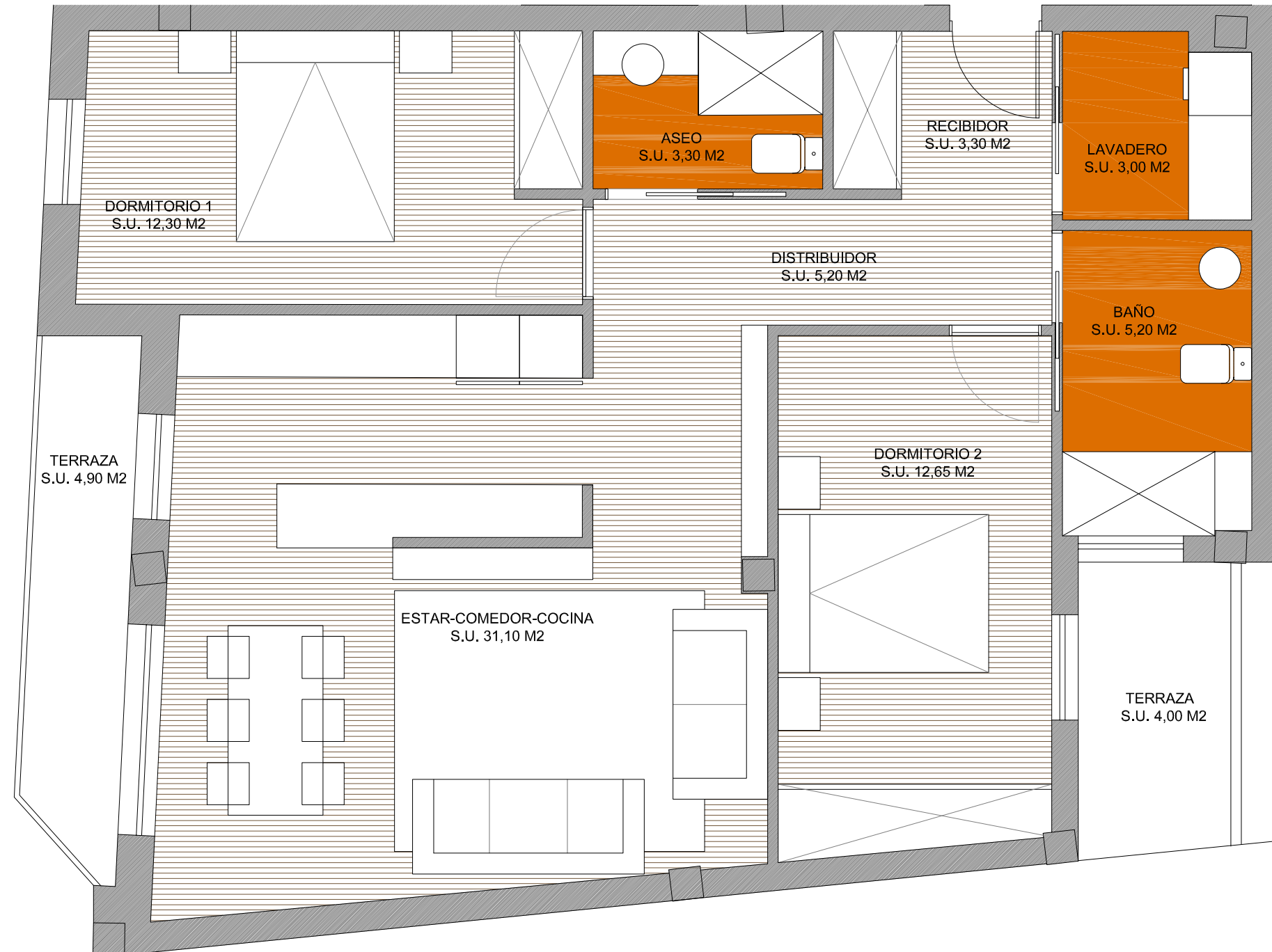
EDIFICIO DONA URRACA-SALVATERRA DE MIÑO



VIVIENDA 1C

SUPERFICIES CONSTRUIDAS			
	CERRADA	ABIERTA	TOTAL
1C	88,50	4,90+4,00	97,40 M2

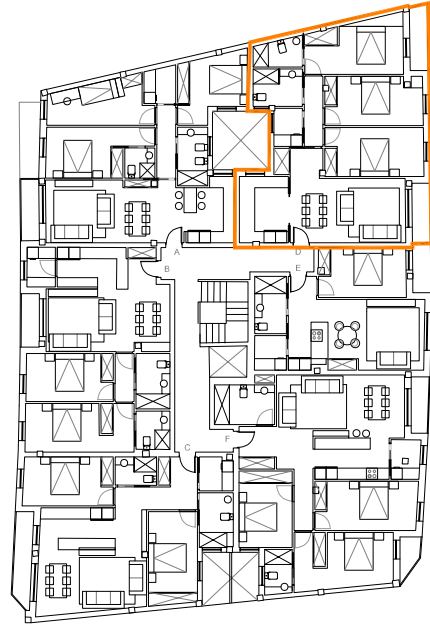
SUPERFICIES UTIL			
	CERRADA	ABIERTA	TOTAL
1C	76,05		



VIVIENDA : 1C

EDIFICIO DONA URRACA-SALVATERRA DE MIÑO

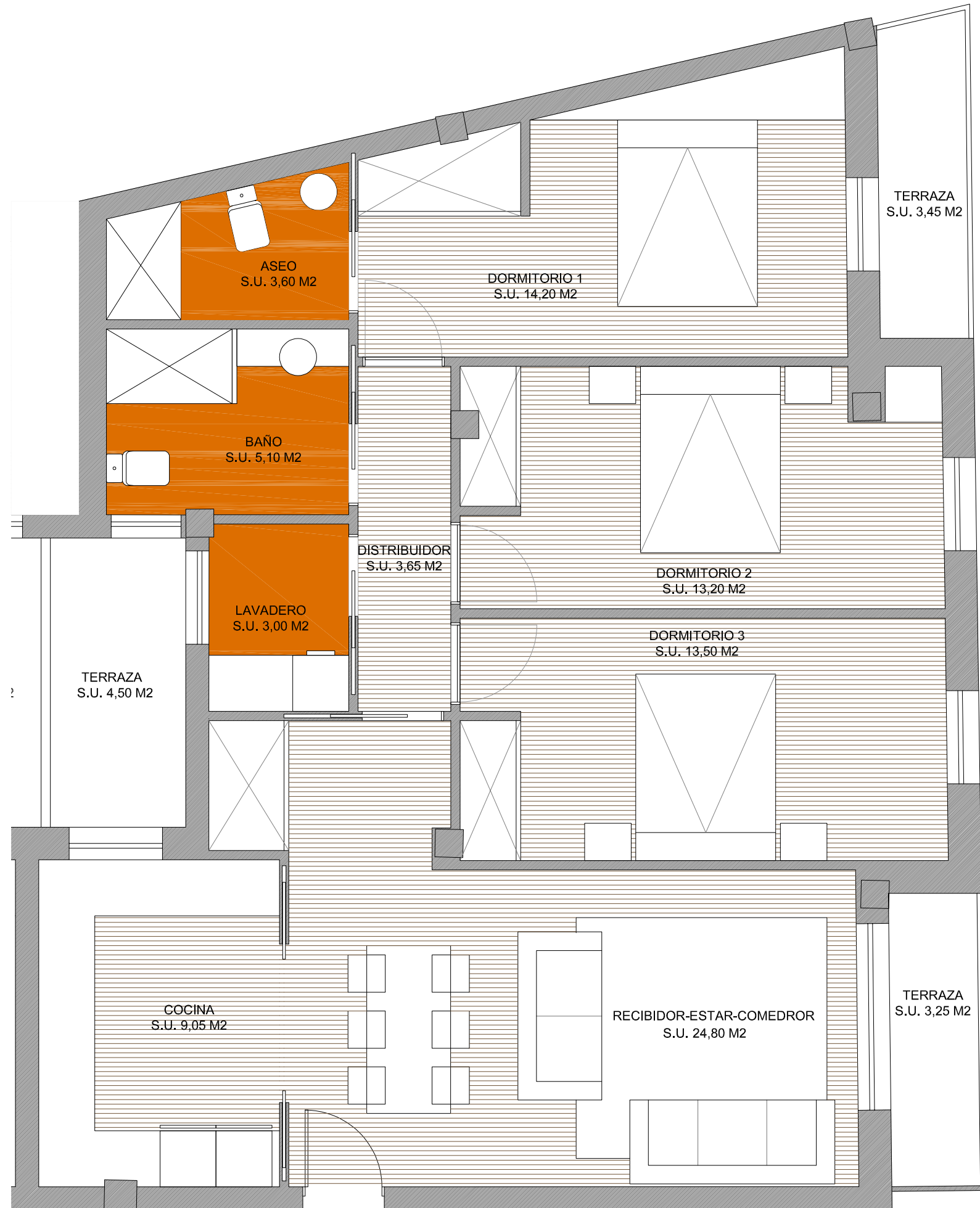




VIVIENDA 1D

SUPERFICIES CONSTRUIDAS			
	CERRADA	ABIERTA	TOTAL
1D	104,90	3,25+3,45+4,50	116,10 M2

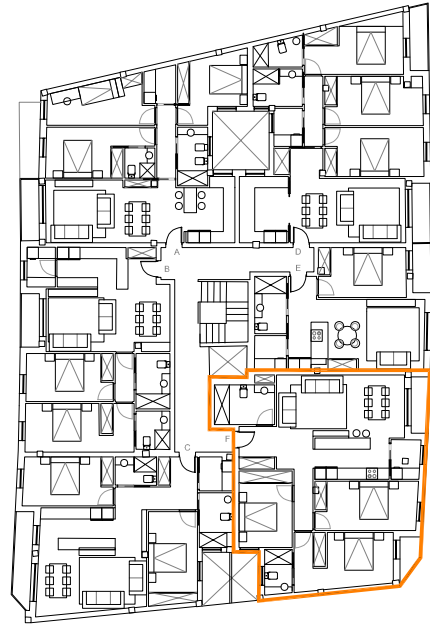
SUPERFICIES UTIL			
	CERRADA	ABIERTA	TOTAL
1B	90,10		



VIVIENDA: 1D

EDIFICIO DONA URRACA-SALVATERRA DE MIÑO





VIVIENDA 1F

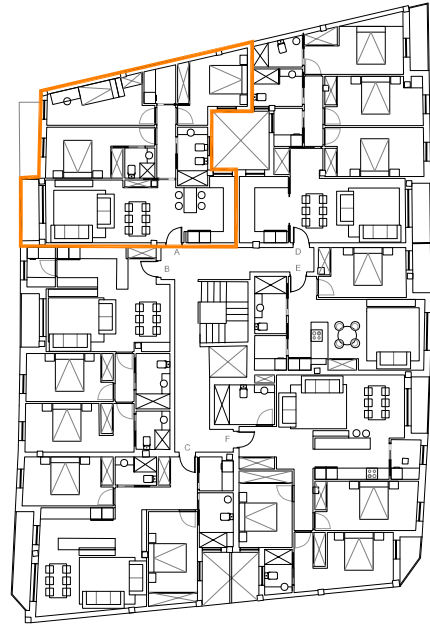
SUPERFICIES CONSTRUIDAS			
	CERRADA	ABIERTA	TOTAL
1F	111,20	2,85+2,05+3,80	120,90 M2

SUPERFICIES UTIL			
	CERRADA	ABIERTA	TOTAL
1F	95,90		



VIVIENDA : 1F

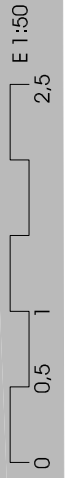
EDIFICIO DONA URRACA-SALVATERRA DE MIÑO



VIVIENDA 2A

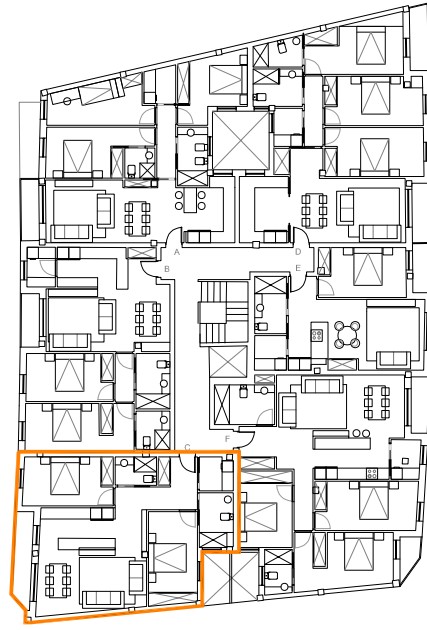
SUPERFICIES CONSTRUIDAS			
	CERRADA	ABIERTA	TOTAL
2A	96,25	7,80	104,05 M2

SUPERFICIES UTIL			
	CERRADA	ABIERTA	TOTAL
1A	82,70		



VIVIENDA : 2A

EDIFICIO DONA URRACA-SALVATERRA DE MIÑO



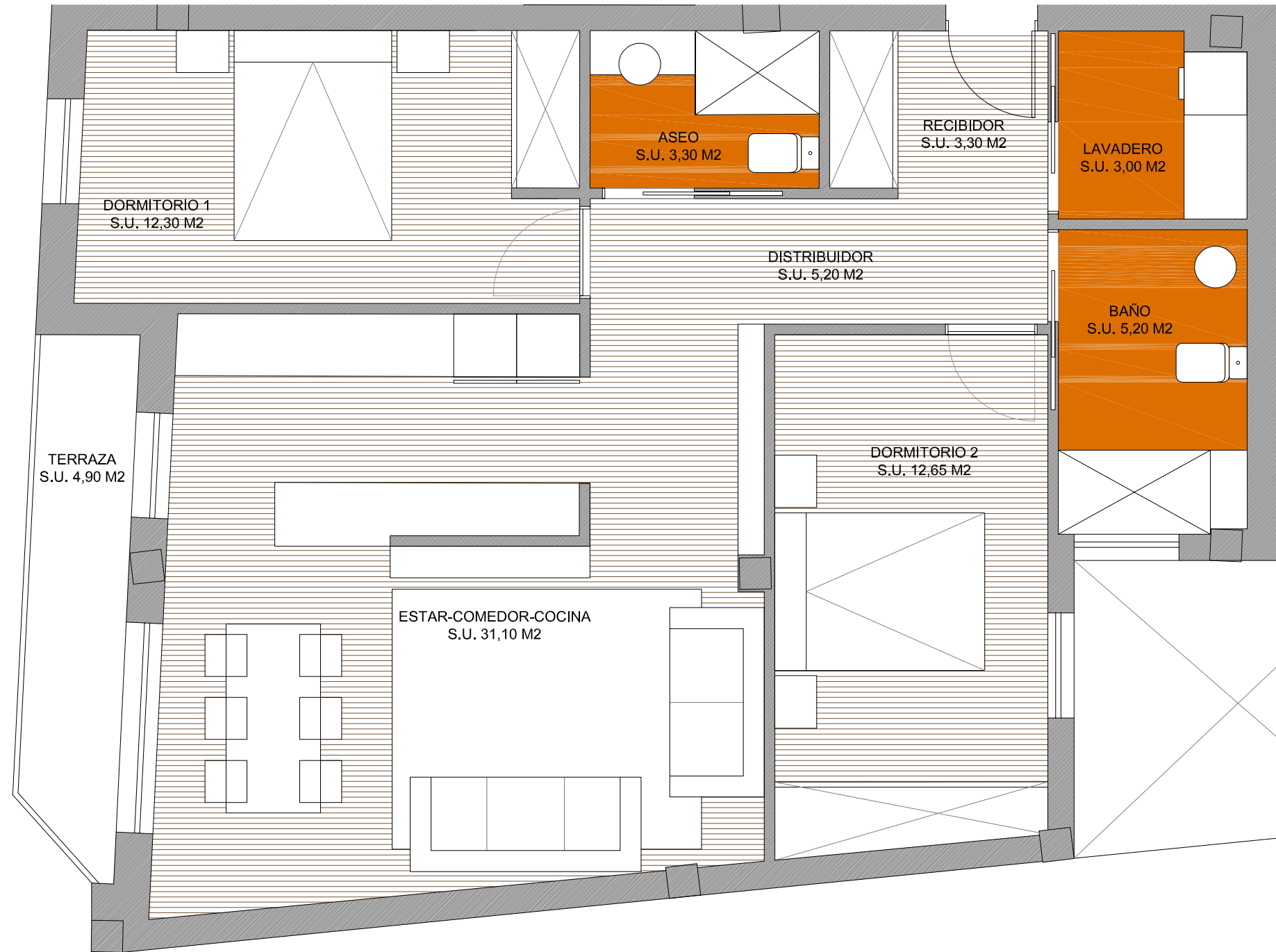
VIVIENDA 2C

SUPERFICIES CONSTRUIDAS

	CERRADA	ABIERTA	TOTAL
2C	88,50	4,90	93,40 M2

SUPERFICIES UTIL

	CERRADA	ABIERTA	TOTAL
2C	76,05		

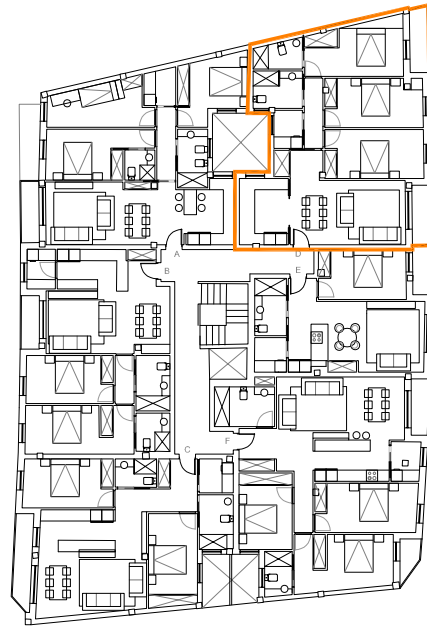


VIVIENDA : 2C

EDIFICIO DONA URRACA-SALVATERRA DE MIÑO



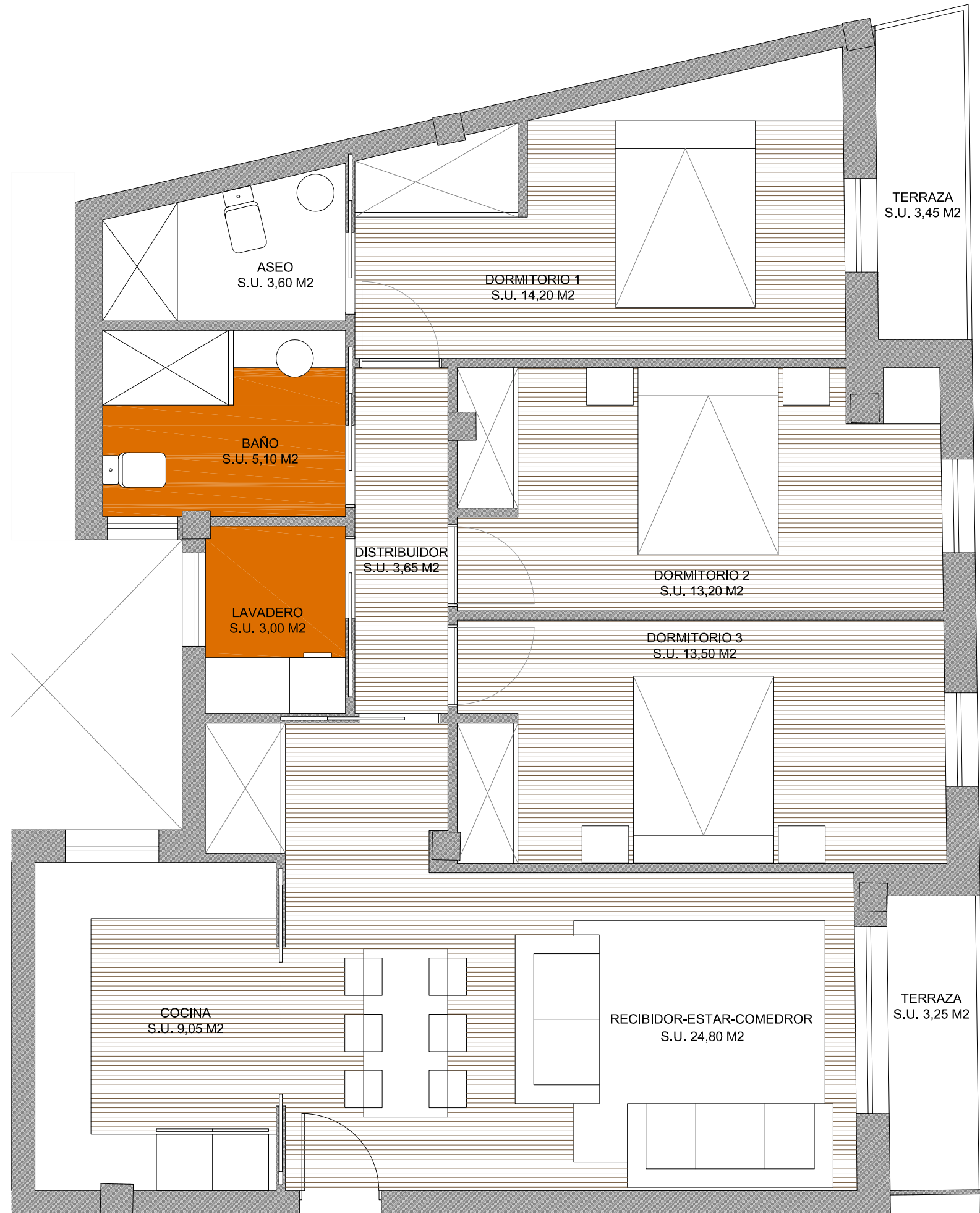




VIVIENDA 2D

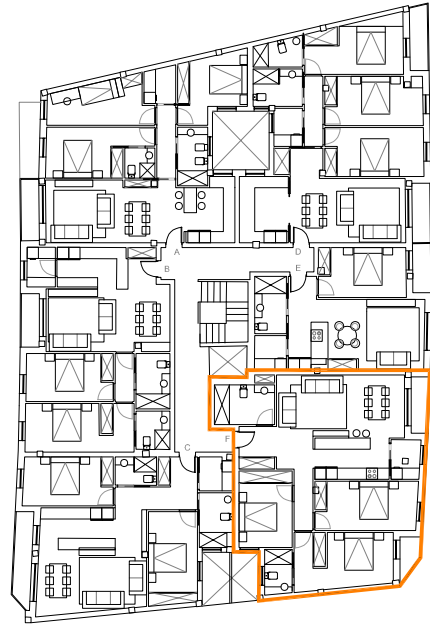
SUPERFICIES CONSTRUIDAS			
	CERRADA	ABIERTA	TOTAL
2D	104,90	3,25+3,45	111,60 M2

SUPERFICIES UTIL			
	CERRADA	ABIERTA	TOTAL
2D	90,10		



VIVIENDA: 2D

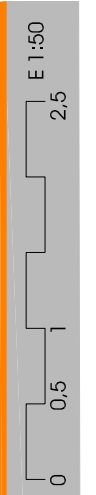
EDIFICIO DONA URRACA-SALVATERRA DE MIÑO



VIVIENDA 2F

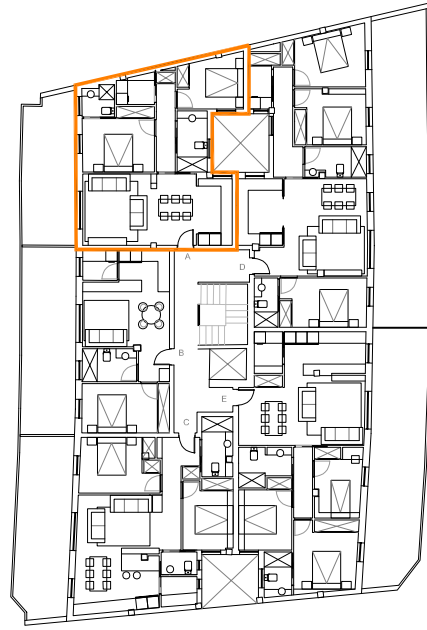
SUPERFICIES CONSTRUIDAS			
	CERRADA	ABIERTA	TOTAL
2F	111,20	2,85+2,05	116,10 M2

SUPERFICIES UTIL			
	CERRADA	ABIERTA	TOTAL
2F	95,90		



VIVIENDA : 2F

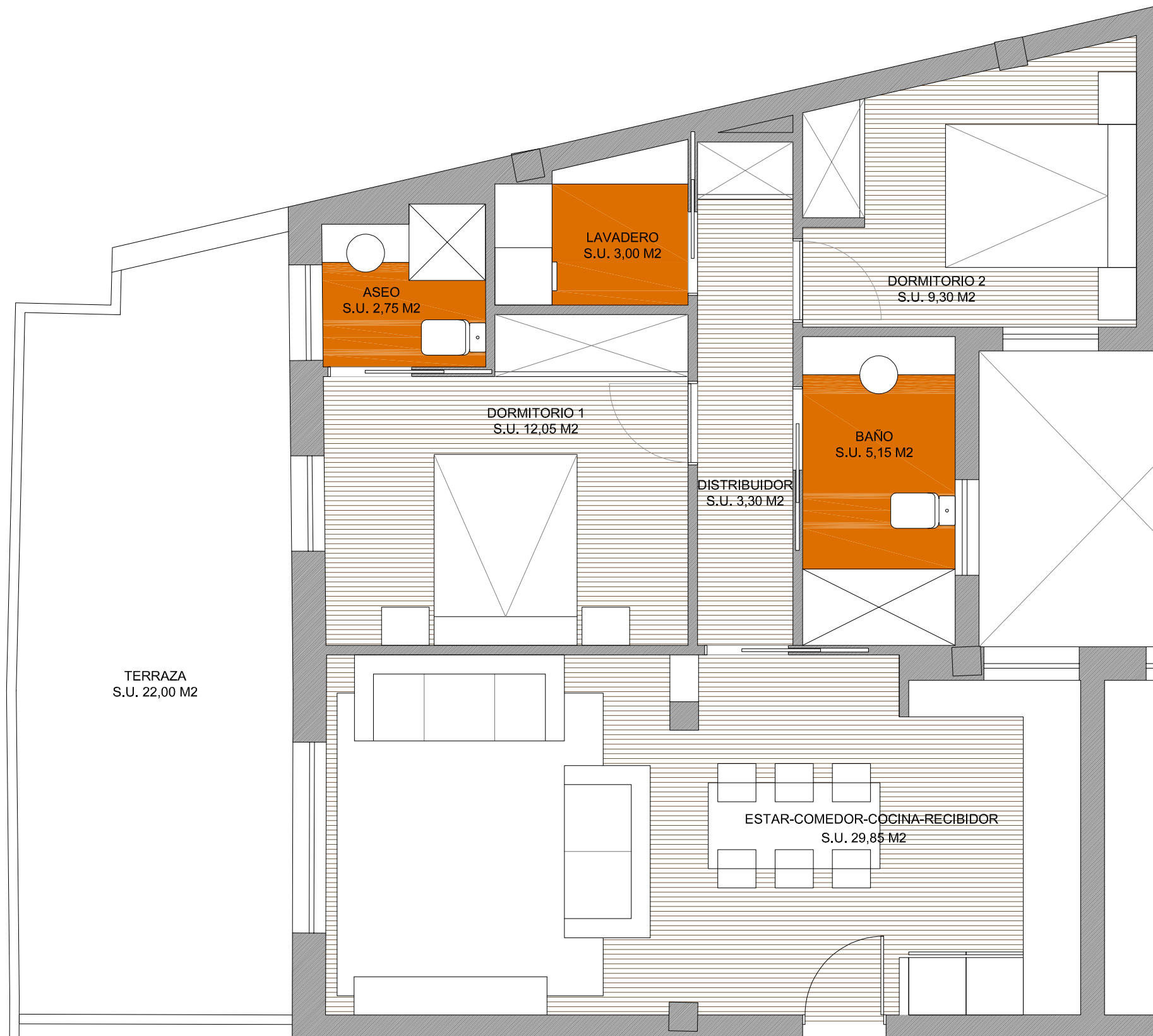
EDIFICIO DONA URRACA-SALVATERRA DE MIÑO



VIVIENDA 3A

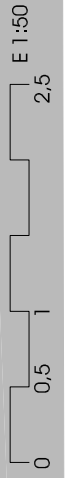
SUPERFICIES CONSTRUIDAS			
	CERRADA	ABIERTA	TOTAL
3A	79,95	22,00	101,95 M2

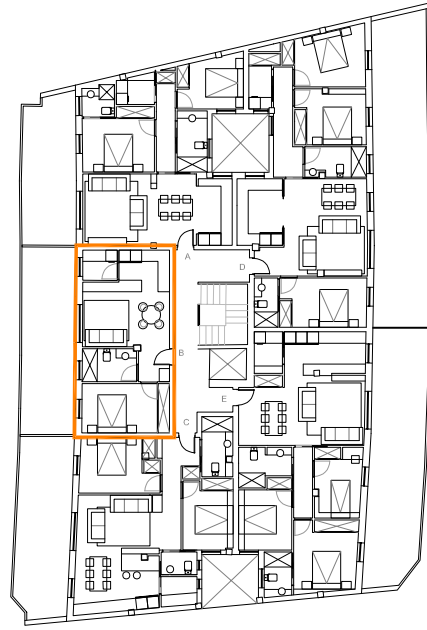
SUPERFICIES UTIL			
	CERRADA	ABIERTA	TOTAL
3A	65,40		



VIVIENDA : 3A

EDIFICIO DONA URRACA-SALVATERRA DE MIÑO

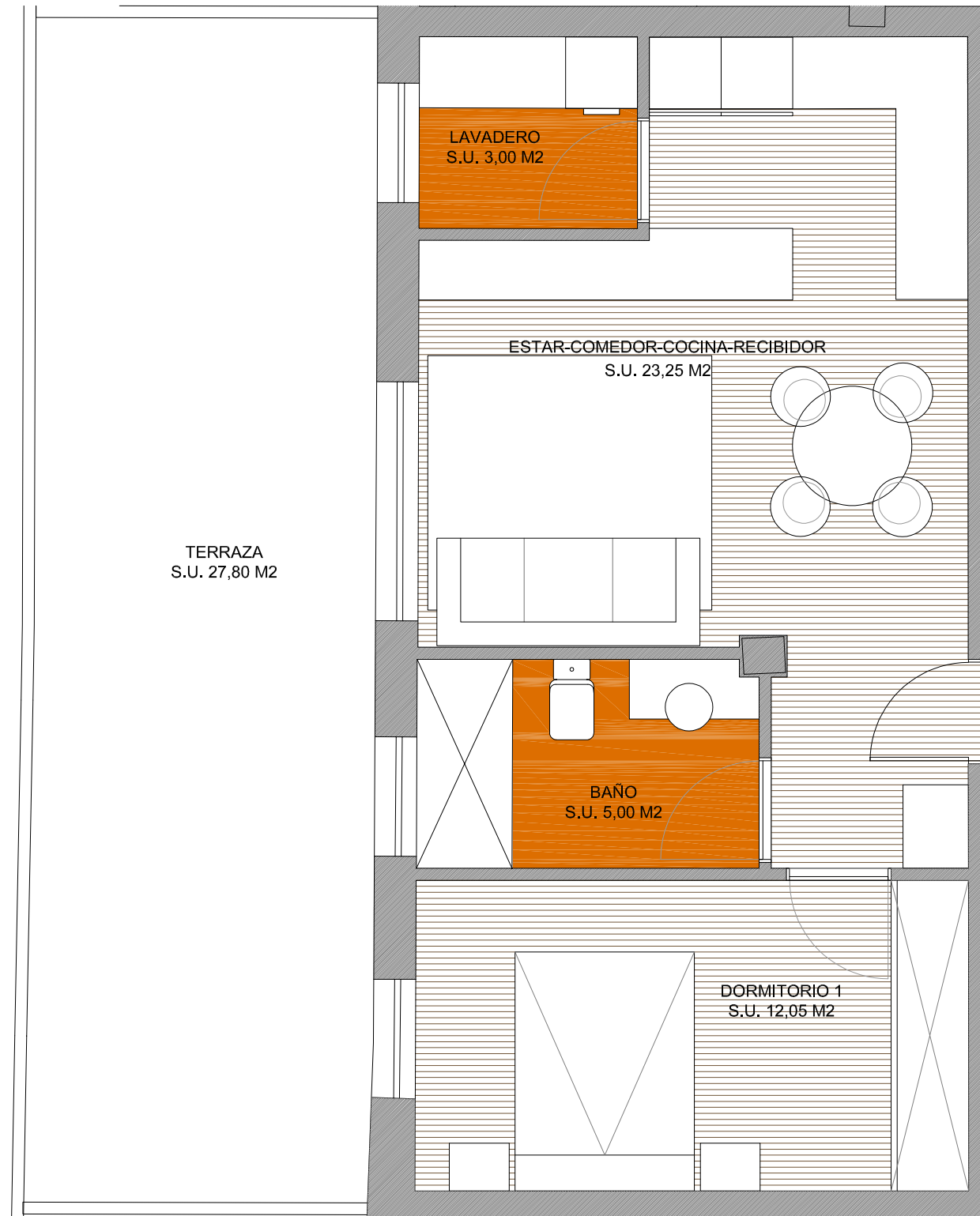




VIVIENDA 3B

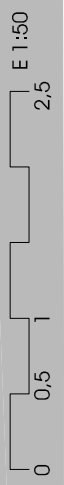
SUPERFICIES CONSTRUIDAS			
	CERRADA	ABIERTA	TOTAL
3B	51,20	27,80	79,00 M2

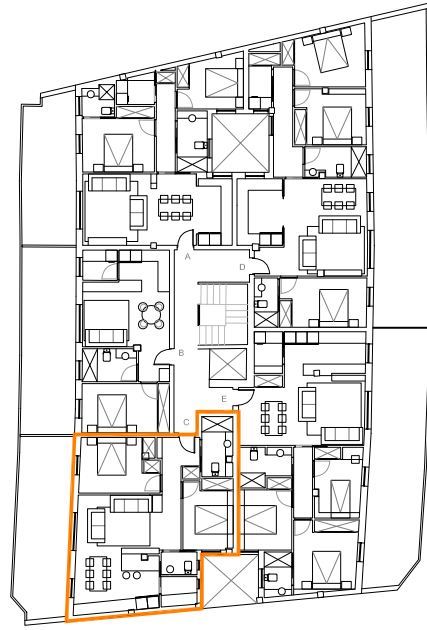
SUPERFICIES UTIL			
	CERRADA	ABIERTA	TOTAL
3B	43,30		



VIVIENDA : 3B

EDIFICIO DONA URRACA-SALVATERRA DE MIÑO

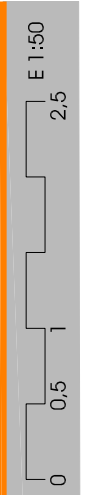
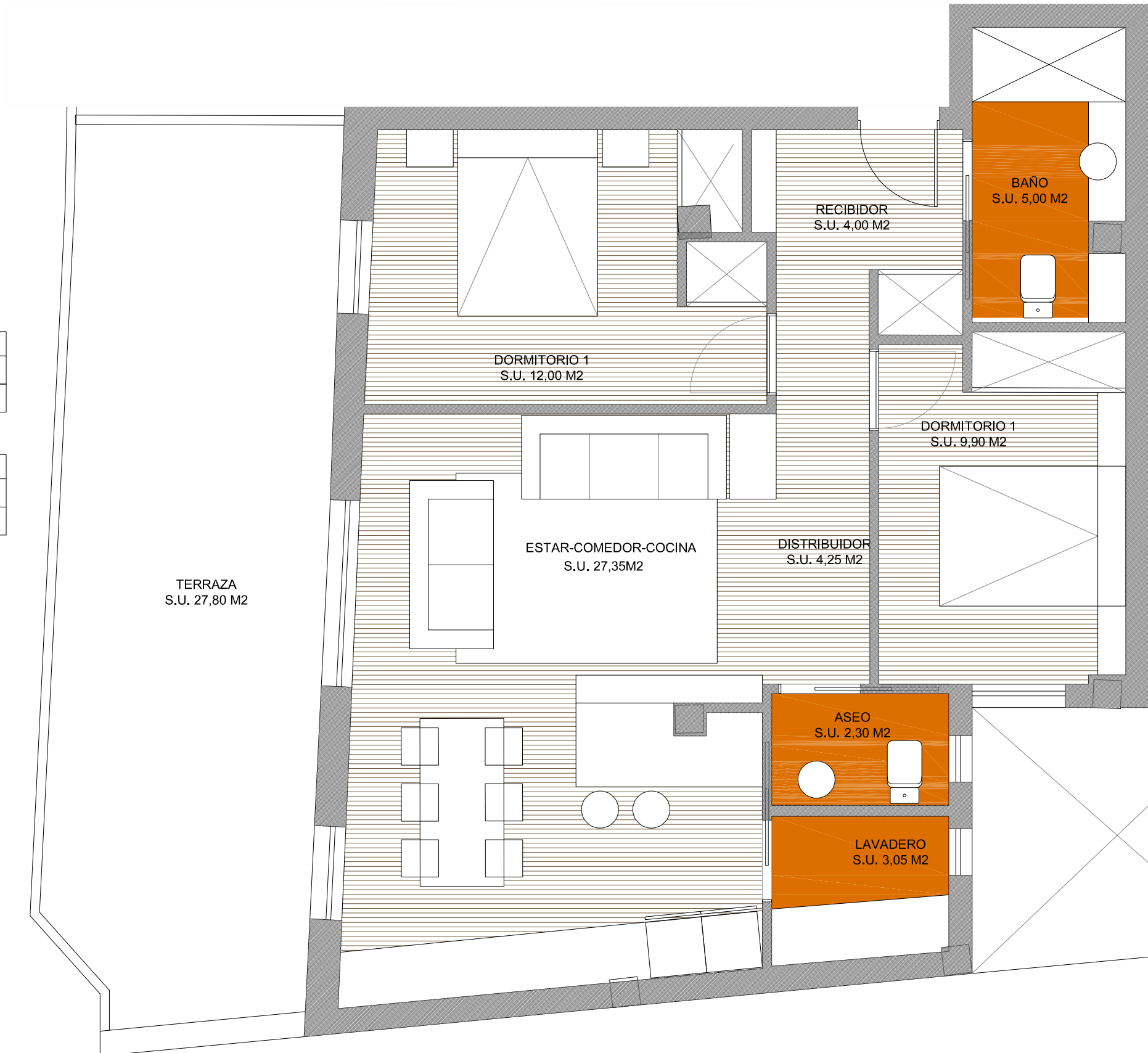




VIVIENDA 3C

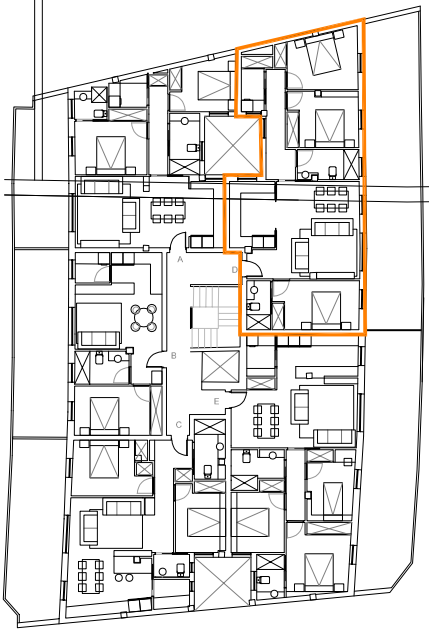
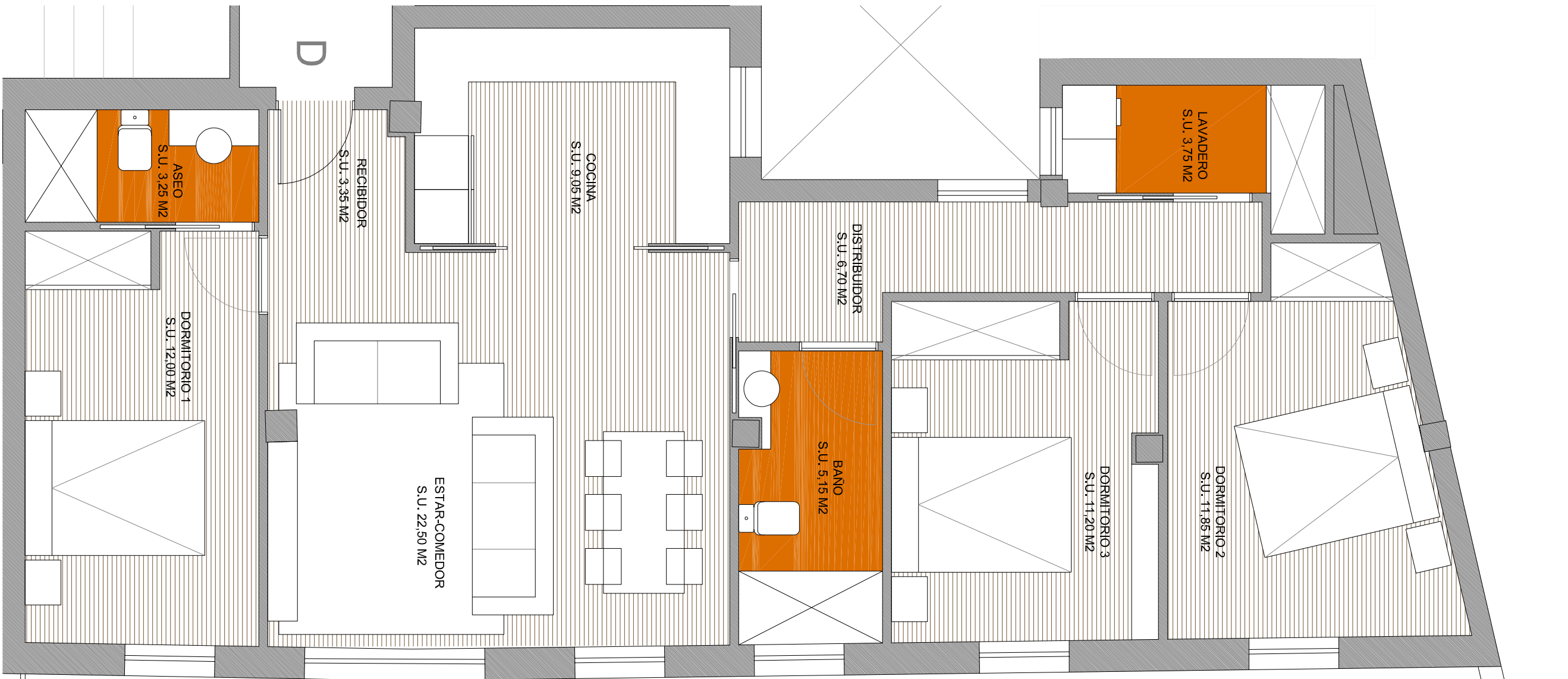
SUPERFICIES CONSTRUIDAS			
	CERRADA	ABIERTA	TOTAL
3C	79,95	27,80	107,75 M2

SUPERFICIES UTIL			
	CERRADA	ABIERTA	TOTAL
3C	67,85		



VIVIENDA : 3C

EDIFICIO DONA URRACA-SALVATERRA DE MIÑO



VIVIENDA 3D

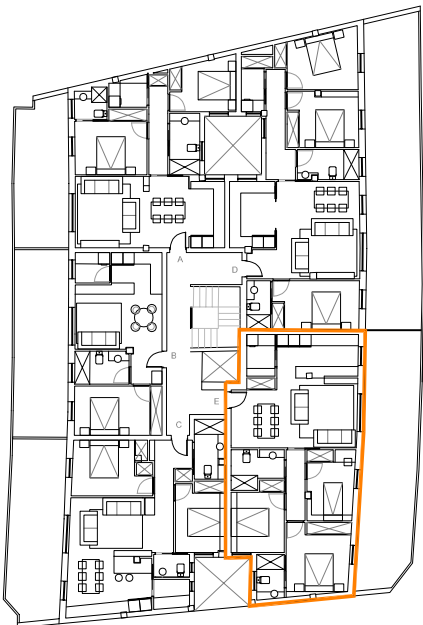
SUPERFICIES CONSTRUIDAS			
	CERRADA	ABIERTA	TOTAL
3D	104,05	48,00	152,05 M2

SUPERFICIES UTIL			
	CERRADA	ABIERTA	TOTAL
3D	88,80		

VIVIENDA : 3D

EDIFICIO DONA URRACA-SALVATERRA DE MIÑO





VIVIENDA 3E

SUPERFICIES CONSTRUIDAS			
	CERRADA	ABIERTA	TOTAL
3E	94,95	39,00	134,95 M <sup>2</sup>

SUPERFICIES UTIL			
	CERRADA	ABIERTA	TOTAL
1B/2B	80,60		

VIVIENDA : **3E**

EDIFICIO DONA URRACA-SALVATERRA DE MIÑO





VIVIENDA BA

SUPERFICIES CONSTRUIDAS			
	CERRADA	ABIERTA	TOTAL
BA	126,15	18,60	144,75 M <sup>2</sup>

SUPERFICIES UTIL			
	CERRADA	ABIERTA	TOTAL
BA	107,70		

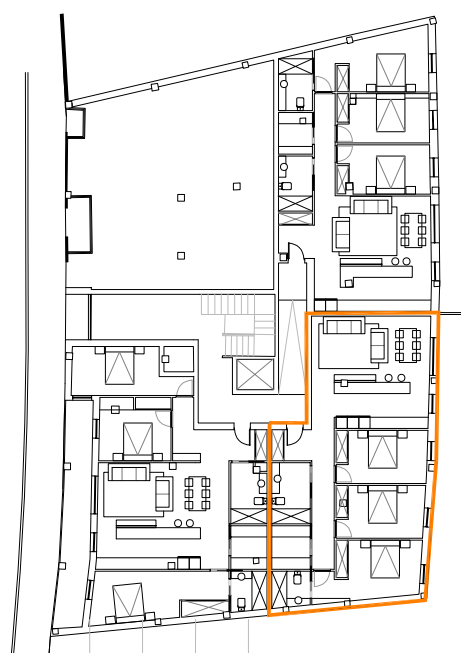
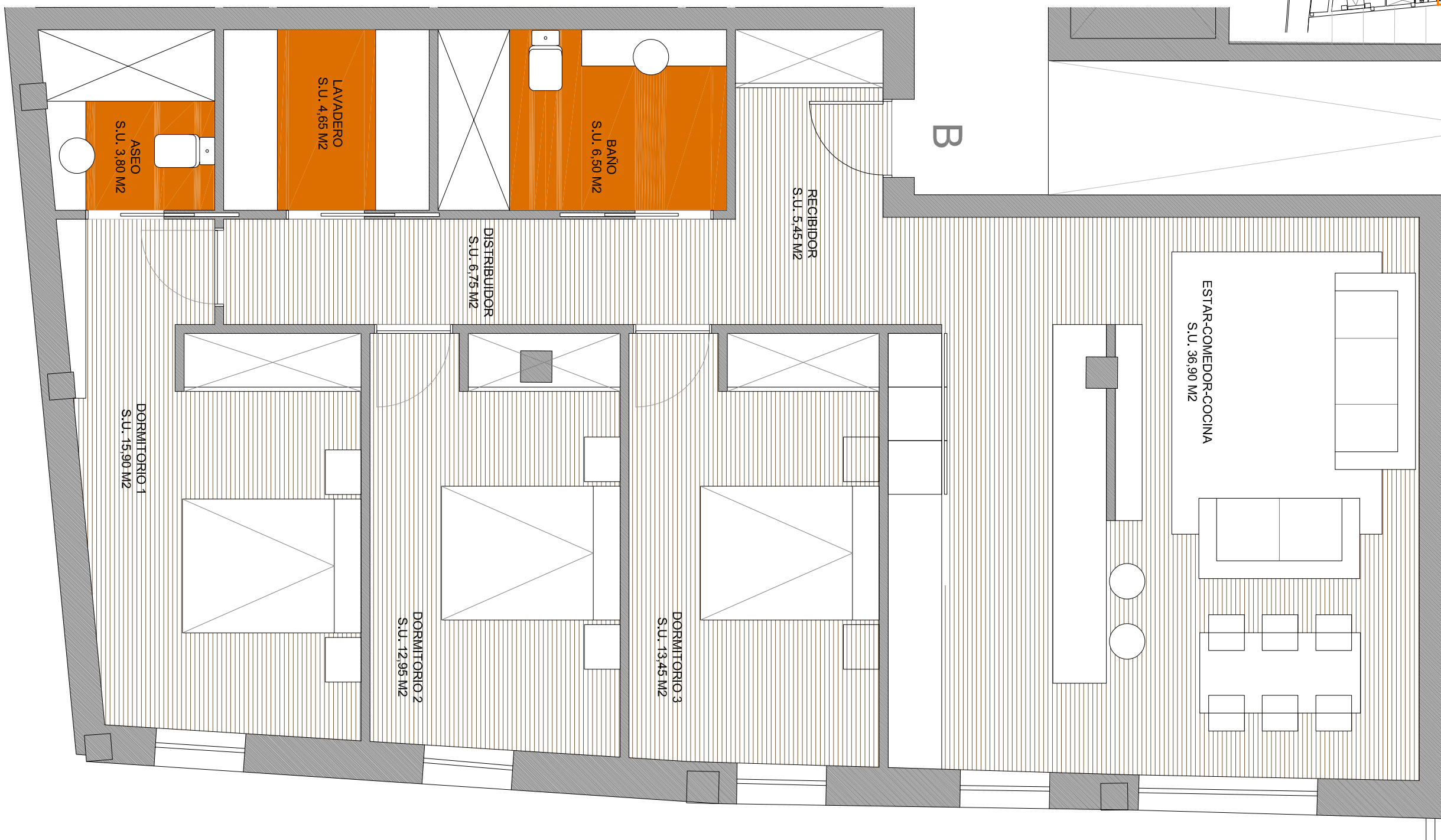
VIVIENDA : BA



VIVIENDA BB

SUPERFICIES CONSTRUIDAS			
	CERRADA	ABIERTA	TOTAL
BB	123,90	APROX 250	373,90 M2

SUPERFICIES UTIL			
	CERRADA	ABIERTA	TOTAL
BB	106,35		



VIVIENDA : BB

EDIFICIO DONA URRACA-SALVATERRA DE MIÑO



VIVIENDA BB

SUPERFICIES CONSTRUIDAS			
	CERRADA	ABIERTA	TOTAL
BB	123,65	APROX 250	373,65 M2

SUPERFICIES UTIL			
	CERRADA	ABIERTA	TOTAL
BC	104,65		

