

Espacio

HomeDesign

BACCO
PROPERTIES

La Lonja

TOWNHOUSE

10/11/2022



Heritage · Design · Commitment



Nuestros orígenes se remontan en el año 1945 en una pequeña carpintería en Villafranca de Bonany, un pueblo mallorquín con mucha tradición.

Our origins date back to 1945 in a small workshop in Villafranca de Bonany, a Mallorcan town with a lot of tradition.

Tres generaciones dedicadas a este oficio artesano da el salto de fabricar a diseñar, creando el primer mueble de cocina modular a medida en 1965. Casi diez años más tarde, en 1974, la empresa da un paso más introduciéndose en el negocio retail a través de su primer showroom en Palma, negocio que, a día de hoy, continúa creciendo con la apertura este 2021 del sexto espacio de exposición y venta y el primero fuera de Palma, en Santa Ponsa - Calvià.

Three generations dedicated to this craftsmanship made the leap from manufacturing to designing, creating the first custom-made modular kitchen furniture in 1965. Almost ten years later, in 1974, the company took a further step by entering the retail business through its first showroom in Palma, a business that, till this day, continues to grow with the opening in 2021 of the sixth showroom and the first outside of Palma, in Santa Ponsa - Calvià.

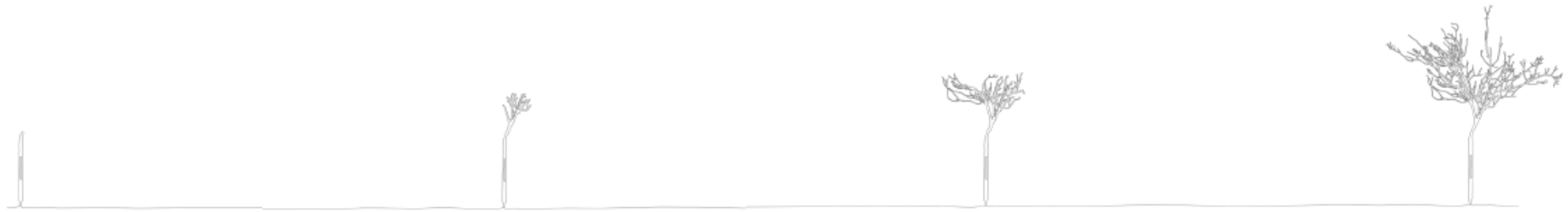
Con esta expansión, Espacio Home Design se consolida como empresa dedicada al diseño de interiores de manera global e integrada en todas sus áreas de especialización: Cocinas, Monbiliario, Baños, Puertas, Armarios y vestidores e iluminación.

With this expansion, Espacio Home Design consolidates itself as a company dedicated to interior design in a global and integrated manner in all its areas of specialization: Kitchens, Furniture, Bathrooms, Doors, Wardrobes and Dressing Rooms and Lighting.



Espacio

HomeDesign



1945

El comienzo de nuestra historia
La carpintería tradicional
Villafranca de Bonany, Mallorca

The beginning of our story
Traditional carpentry
Villafranca de Bonany, Mallorca

1965

Del oficio al diseño
Muebles y proyectos de cocina
personalizados

From trade to design
Custom Kitchen furniture
and projects

1974

De la fabricación al retail
Apertura de la primera
tienda en Palma

From manufacturing to retail
Opening of the first
store in Palma

2021

6 showrooms en Mallorca
+75 años de experiencia
+5.000 clientes

6 showrooms in Mallorca
+75 years of experience
+5.000 customers

PROJECTS

"Estamos contigo durante todo el proceso; desde el principio y más allá"

"Throughout the whole process we go along with you; to the making off and beyond"

ENFOQUE DEL PROYECTO

Integramos a nuestro equipo junto al cliente para desarrollar la base y conocer los pormenores del trabajo.

ESPECIFICACIONES INICIALES

Establecemos las prioridades, bocetos y presupuesto para marcar el plan de trabajo.

PLANIFICACIÓN

Realizamos el programa y calendario de trabajo.

PRODUCCIÓN

Personalizamos los productos para cada uno de nuestros proyectos.

CONTROL DE CALIDAD

Realizamos el seguimiento continuo del proyecto, los productos y toda la planificación para mantener la eficacia y la calidad pactada con el cliente.

LOGÍSTICA

Capacidad de respuesta y rapidez en la gestión de proyectos.

MONTAJE E INSTALACIÓN

Producimos y gestionamos todo el montaje e instalación del proyecto.

ASISTENCIA POST-VENTA

Nuestro trabajo no termina al finalizar el montaje del proyecto, te servimos y acompañamos a lo largo de los años en todas las necesidades que puedan surgir.

PROJECT FOCUS

We integrate our team and the client, developing a base and getting to know the ins and outs of every job.

INITIAL SPECIFICATIONS

We establish priorities, drawings and a budget to develop the work plan.

PLANNING

We establish a work plan and schedule.

PRODUCTION

We personalize products for every project we develop.

QUALITY CHECK

We perform a continuous follow-up of the project, the products and all the planning to maintain efficiency and the quality agreed to with the client.

LOGISTICS

Responsiveness and speed in project management.

ASSEMBLY / INSTALLATION

We perform and manage all project installations.

POST-SALE SUPPORT

Our work is not done just because the project comes to an end. We are at your service and help you with anything that you might need assistance with over the years

El proyecto

The project

La Lonja is one of the most attractive districts of the old town in Palma de Mallorca.

This historic building is being comprehensively refurbished to create four luxurious apartments with views over Paseo Marítimo, the avenue that goes along the sea side.

Spread over 254 square metres, this elegant home comprises four bedrooms, three bathrooms, a kitchen, living and dining room. The frontline position provide residents with views over the palm trees to the port.

The bedrooms are all doubles with built-in wardrobes. Two have en suite bathrooms; the the other two uses a separate bathroom.

The open plan kitchen, dining room and living room feature a simple, minimalist design where low profile cabinetry enables the kitchen to blend in with the surrounding decor. Large windows and floor to ceiling glass doors allow natural light to flood in.

The combination of Gris Zarci countertops, cabinetry and walls and the pale wood Herringbone floors create a stylish and calming interior. Large windows and floor-to-ceiling glass doors throughout the property bathe the interior in natural light and provide residents with views over the palm trees to the port.

Lonja de Mar is constructed to the highest standards and fitted with top quality equipment: Dornbracht fixtures in the bathrooms and Gaggenau appliances in the kitchen, as well as underfloor heating and air conditioning, making it suitable for year round living

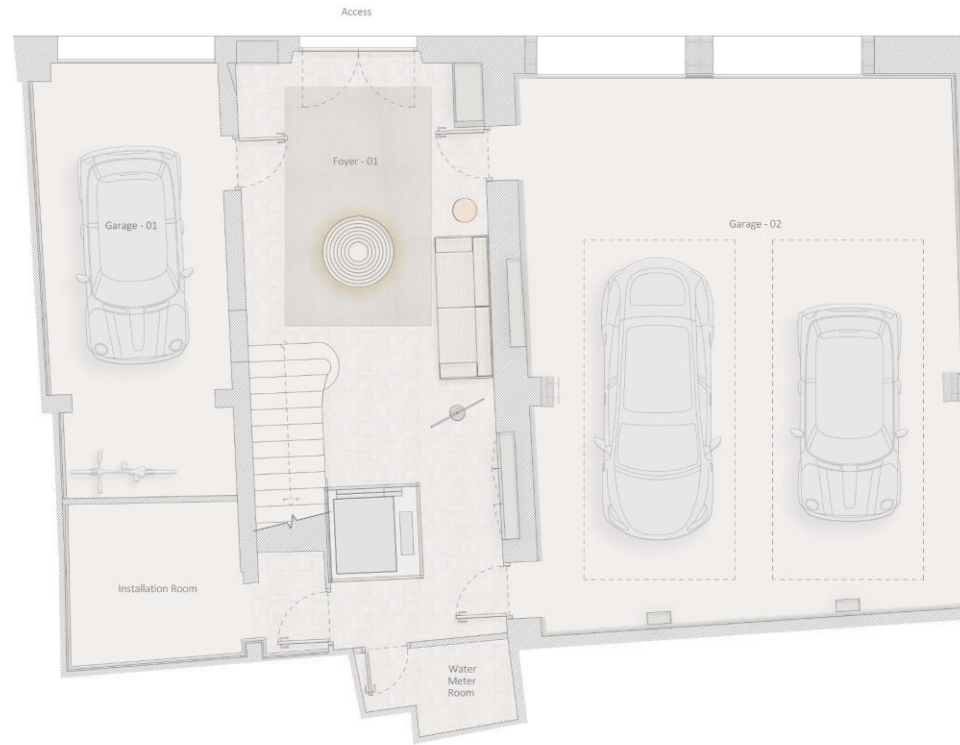


La Lonja

Townhouse

Townhouse

- Bedrooms: 2-3
- Bathrooms: 3
- Built: 276 m2
- Balconies: 1
- Garage: Yes



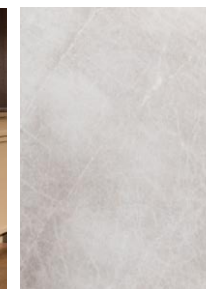
Townhouse

Townhouse

- Bedrooms: 2-3
- Bathrooms: 3
- Built: 276 m2
- Balconies: 1
- Garage: Yes



Kitchen



**The photographs are orientative

Industrial Kitchen

The **Industrial** model has perimeter frame on the fronts with milled handle which allows easy opening thus making the kitchen sophisticated and pure. **Industrial** model goes in hand with natural wood veneer design.

Kitchen & Winery

Características

Features

COCINART
since 1945

GAGGENAU

BORA

Situándonos en las cocinas de proyecto **La Lonja** cobran vida con un estilo mediterráneo y sofisticado. En este caso hemos optado por elegir mobiliario de la marca **Cocinart**, permitiéndonos ajustar diseños elaborados con una presencia única.

El modelo **Industrial** cuenta con marco perimetral en los frentes y tirador fresado que nos permite una fácil apertura. Haciendo así de la cocina algo sofisticado y puro.

Continuando la línea hemos optado por acompañar la cocina con electrodomésticos de excelencia en el mercado, contando con calidades extraordinarias y aportándonos la confianza que transmiten. **Gaggenau, Bora, Blanco**, son las elegidas para dar vida y funcionalidad al alma de la casa, la cocina.

Presentando las encimeras utilizamos **Piedra Natural Gris Zarci**, dando un estilo delicado y sofisticado, sin ser la protagonista, pero completando un conjunto exclusivo.

The kitchens of the **La Lonja** project come to life with a Mediterranean and sophisticated style. In this case we have chosen furniture from the **Cocinart** brand, allowing us to adjust elaborate designs with a unique presence.

The **Industrial** model has a perimeter frame on the fronts and a milled handle that allows for easy opening. Thus making the kitchen something sophisticated and pure.

Continuing the line we have chosen to accompany the kitchen with appliances of excellence in the market, with extraordinary qualities and giving us the confidence that they transmit. **Gaggenau, Bora, Blanco**, are the ones chosen to give life and functionality to the soul of the house, the kitchen.

The worktops are made of **Zarci Grey Natural Stone**, giving a delicate and sophisticated style, without being the protagonist, but completing an exclusive set.

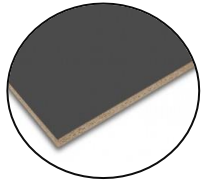
La Lonja

Características técnicas

Technical features

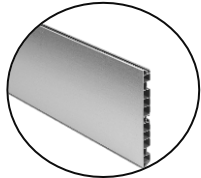
cocinart
since 1945

- Interiors of furniture



Interiors are made of wood particle board with 16mm matt melamine coating and edged in ABS. This material complies with class E1 formaldehyde regulation and has the EPD quality seal.

- Plinth



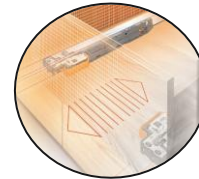
Plinth made of PVC for greater durability and resistance. Available in stainless steel, white, wood or anthracite finish.

- Support



All the supports of our modules are made of thermoplastic material with high impact resistance, are characterized by high dimensional stability and inalterability over time, and guarantee optimum chemical and mechanical resistance. Average compression capacity is 400kg / each.

- Blum drawer guides



All drawers feature Blum's MOVENTO system, which presents a more precise performance, providing an ultralight synchronized and adjustable glide.

- Blum drawers



Blum Legrabox system, elegant design with slim 12.8mm outer profile, high dynamic load capacity of 40-70kg. Made of black terra matte finish steel. BLUMOTION cushioning that allows a smooth and silent closing. There is the possibility of assisted opening combining it with the SERVODRIVE electrical system, or with the TIP-ON mechanical system.

- Hinges



Hettich hinges offer the highest quality, as well as mounting and precise adjustment possibilities, which are particularly easy to mount. Awarded multiple times, thanks to its integrated invisible cushioning.

Cocina Townhouse

Kitchen Townhouse



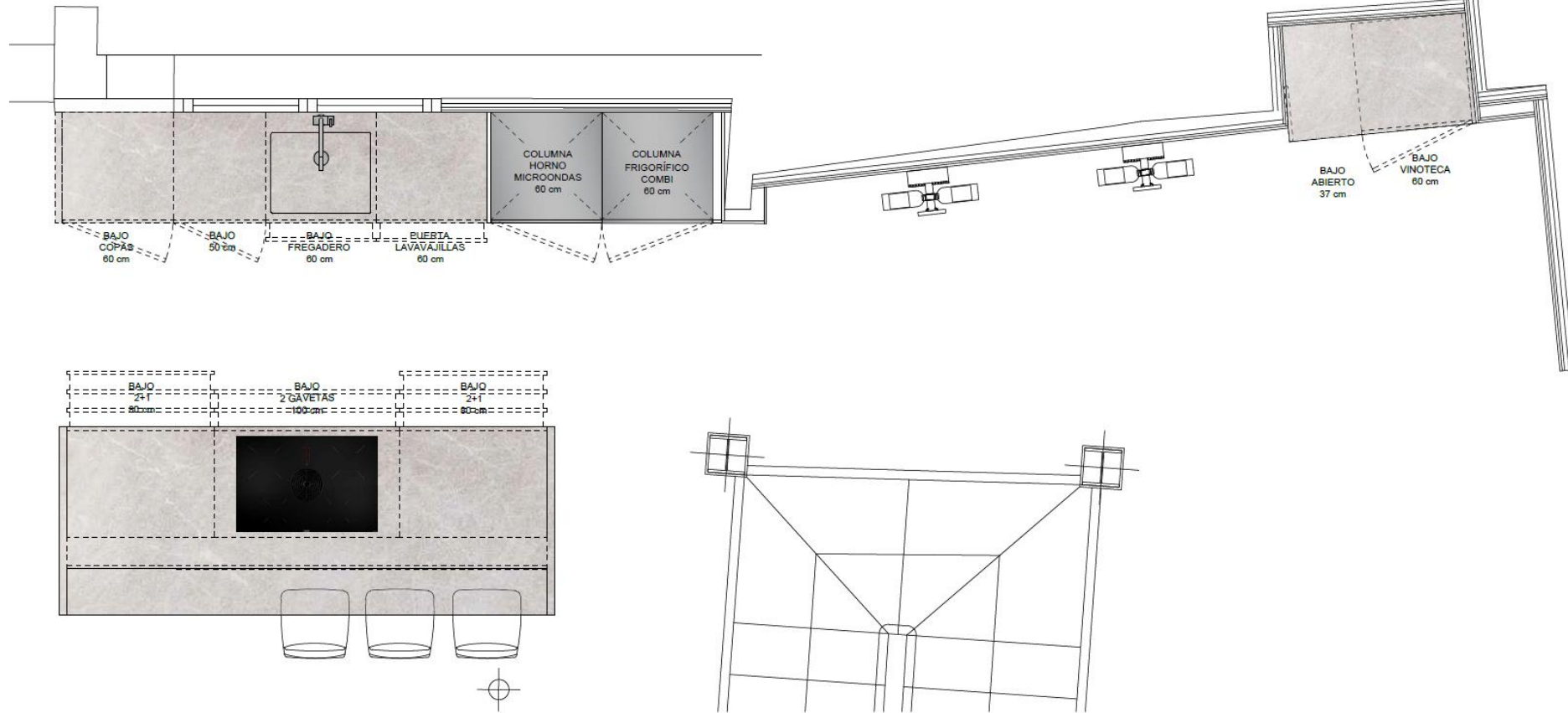
Top –
Natural
Stone Gray
Zarci



Fronts –
lacquered
NSC
S4005YCR



Interior –
Oak wood



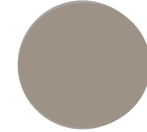
**The design is orientative, depends on final measurements

Cocina Townhouse

Kitchen Townhouse



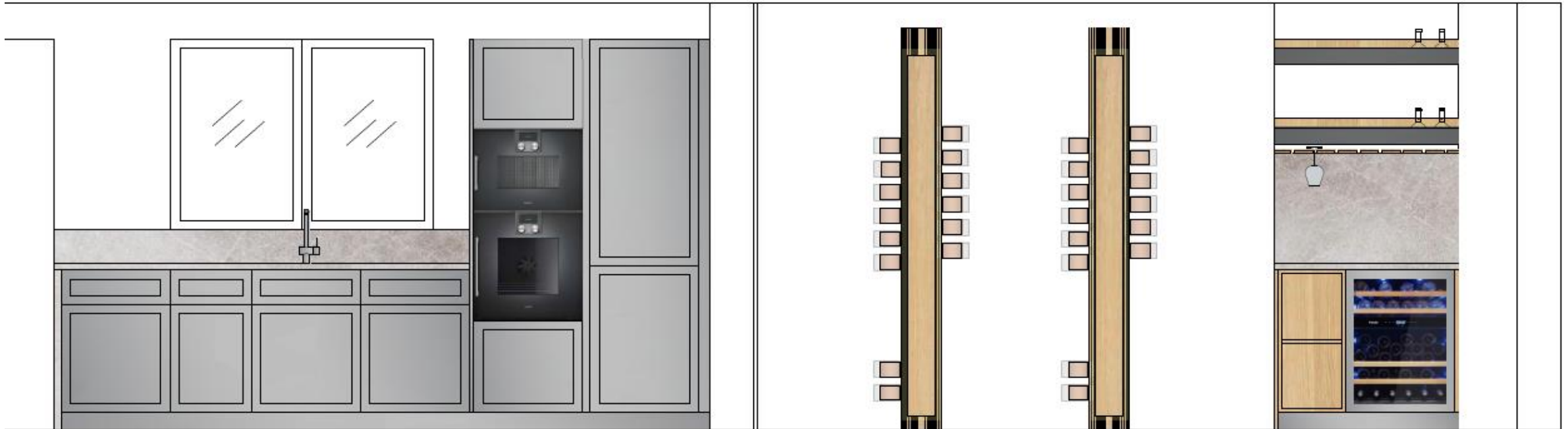
Top –
Natural
Stone Gray
Zarci



Fronts –
lacquered
NSC
S4005YCR



Interior –
Oak wood



**Vine storage 2 units are optional*

***The design is orientative, depends on final measurements*

Cocina Townhouse

Kitchen Townhouse



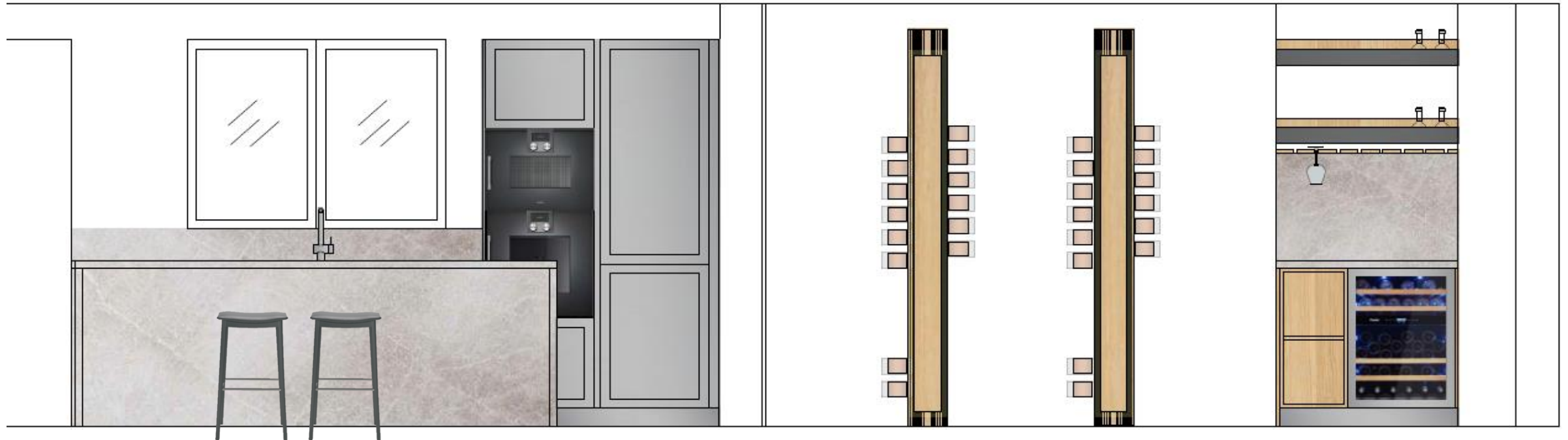
Top –
Natural
Stone Gray
Zarci



Fronts –
lacquered
NSC
S4005YCR



Interior –
Oak wood



**Vine storage 2 units are optional*

***The design is orientative, depends on final measurements*

Electrodomésticos

Electrical appliances



**The photographs are orientative



BORA PURE

*Placa de inducción con
extractor de superficie
integrado*

Ref. PURU



Electrodomésticos

Electrical appliances

GAGGENAU



GAGGENAU
HORNO
Oven
Ref. BOP210102



GAGGENAU
HORNO-MICROONDAS
Oven - microwave
Ref. BMP250100

Electrodomésticos

Electrical appliances

GAGGENAU



GAGGENAU
FRIGORÍFICO COMBI
Fridge, Freezer

Ref. RB289300



GAGGENAU
LAVAVAJILLAS
Dishwasher

Ref. DF210100

Electrodomésticos

Electrical appliances

Pando



**The photographs are orientative

PANDO Vinoteca bajo encimera

*Puerta cristal,
panelable*

Ref. PVMBP 60-45

- *Puerta PUSH-TO-OPEN*
- *Altura de la puerta 72 cm*
- *Bisagra profesional en negro "Soft-Close"*
- *Apertura derecha/Izquierda*
- *Capacidad 45 botellas*



Bisagra profesional "Soft-Close"
Dobradiça profissional "Soft-Close"

Laundry



**The photographys are orientative

Longline Laundry

The Cocinart Laundry has columns and base units with white lacquered fronts. Stainless steel plinth and grooves, anthracite gray interior and openings through rims and handles. In addition of our Absolute Blanc Compact Countertop.



Laundry

Coladuria Townhouse

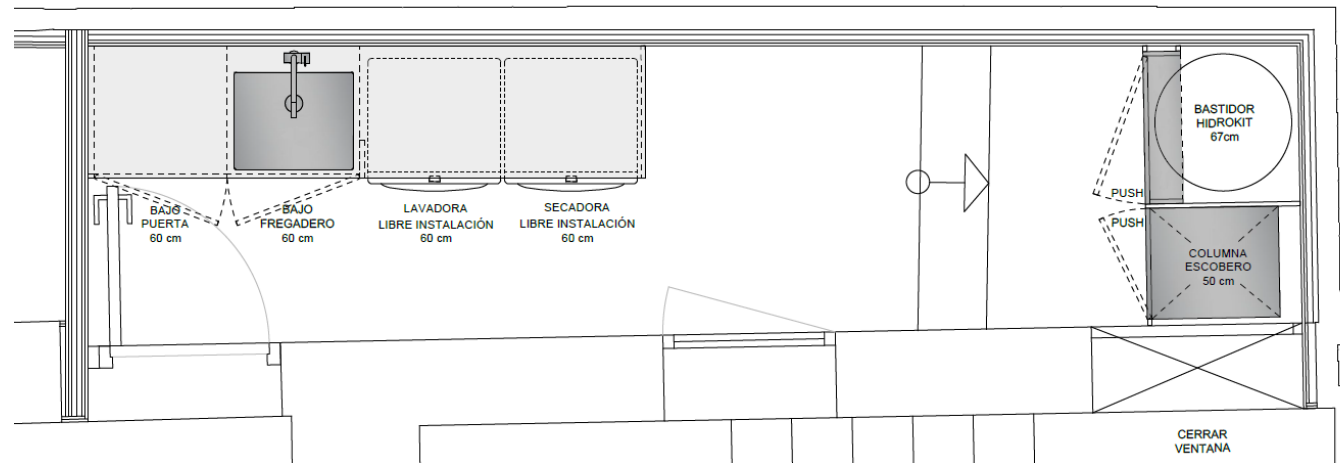
Laundry Townhouse



Top –
Absolute
Blanc
Compac



Fronts –
White
Lacquered



**The design is orientative, depends on final measurements

Coladuria Townhouse

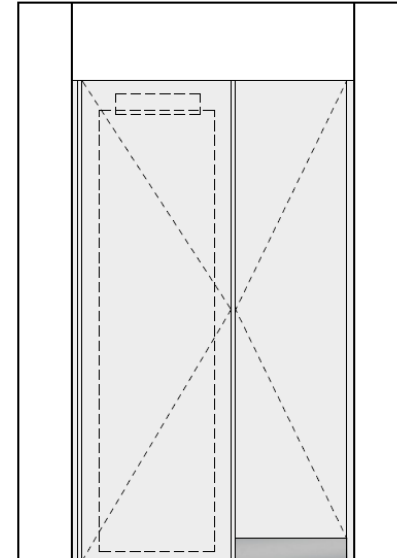
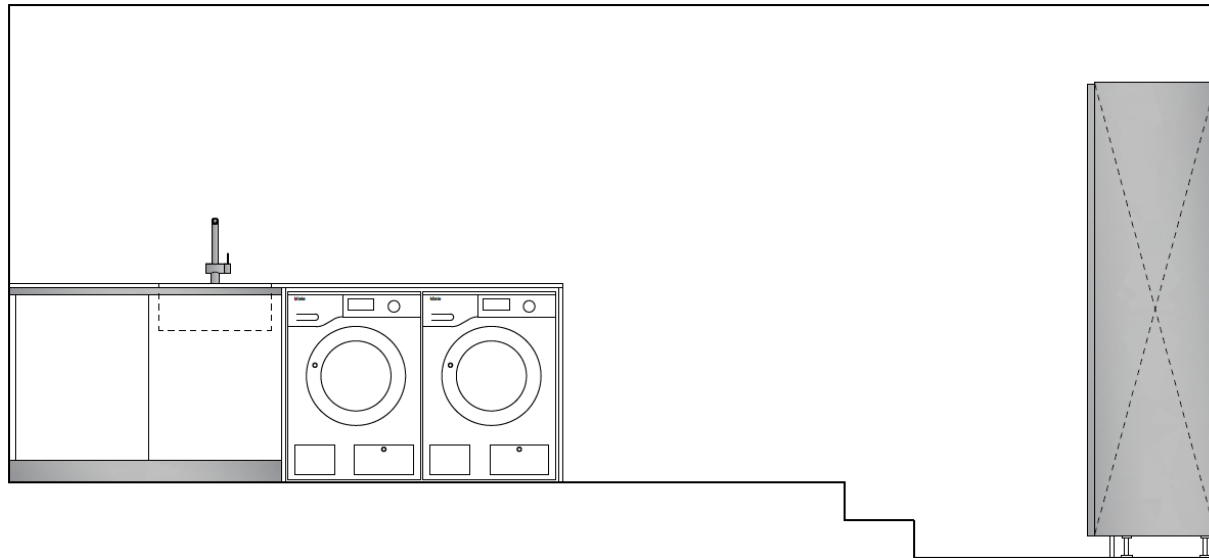
Laundry Townhouse



Top –
Absolute
Blanc
Compac



Fronts –
White
Lacquered



**The design is orientative, depends on final measurements

Electrodomésticos

Electrical appliances

Miele



MIELE
Lavadora
Washing machine
Ref. WCD660 WCS Tdos &
8kg



MIELE
Secadora
Drying machine
Ref. TCD 260 WP 8kg

Fregadero, grifo

Sink, tap

BLANCO



BLANCO
Grifo con caño extraíble
Tap with pull-out spout

Ref. Linus - S, 512 402,
cromado / chrome



BLANCO
Fregadero bajo encimera, inox
Undermount sink, stainless steel

Ref. ANDANO 500-U 522 967

Wardrobes



Gliss Master

Gliss Master broadens its design potential with the introduction of new fittings for the Cave handle in the melamine drawer fronts, with pewter colour and bronze finishes and optionally covered in Eco Skin in the five colours; the option of inserting a supplementary internal partition grid, a sloping glass shoe rack shelf with inside LED, and, lastly, a pullout in natural cotton in the colour ecru laundry basket.

Designed by VINCENT VAN DUYSSEN




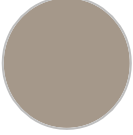

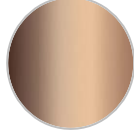

**The photographs are orientative

Armarios Townhouse

Wardrobes Townhouse

Wardrobe 01

T_A01

- 
 Drawers –
Eco Skin Marfil
- 
 Doors –
Matt lacquered
Tortola Grey
- 
 Doors –
Glass Stopsol
Transparent
- 
 Metallic
structure –
Bronze
- 
 Structure –
Light Chesnut



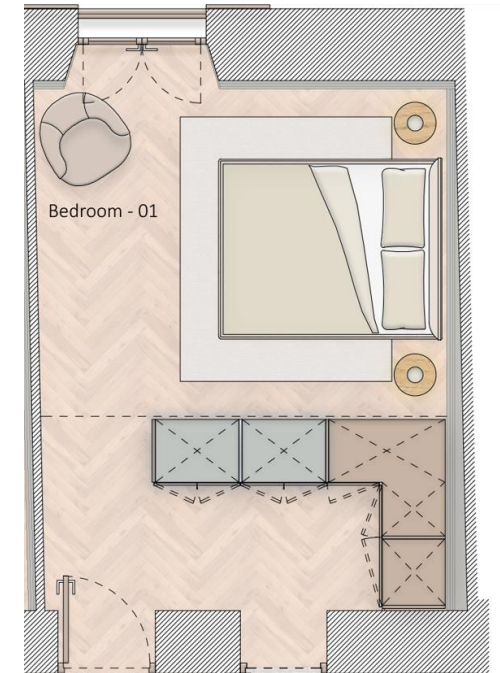
Ecoskin Drawers



Lacquered
back panel



**The
photographs
are
orientative



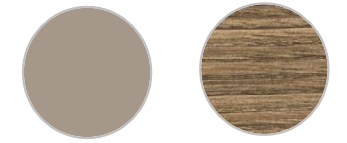
**The design is orientative, depends on final measurements

Armarios Townhouse

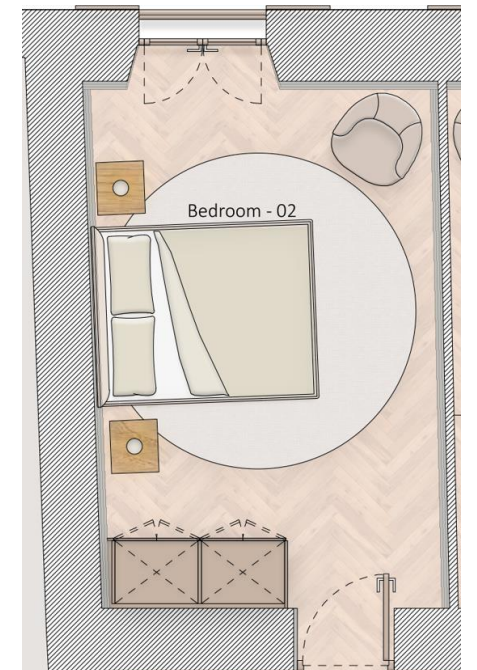
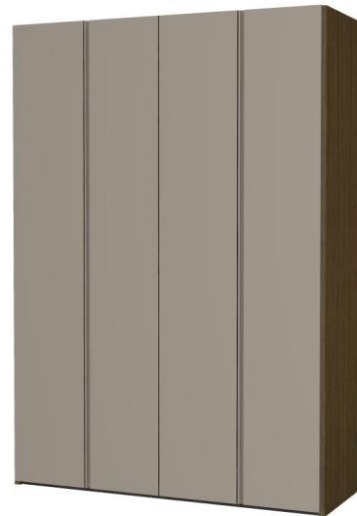
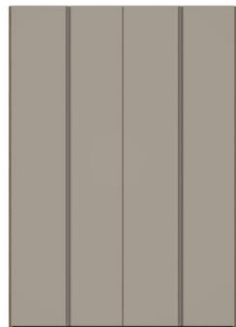
Wardrobes Townhouse

Wardrobe 02

T_A02

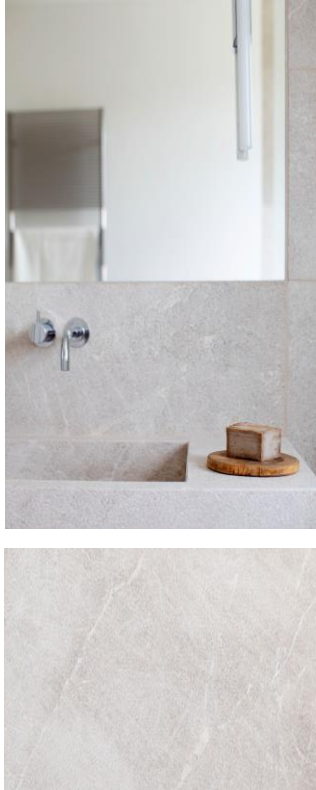


Fronts – Matt lacquered Tortola Grey
Structure – Light Chesnut



**The design is orientative, depends on final measurements

Bathrooms



**The photographs are orientative

Nudo LED

Nudo LED maintains the essential shape of the version without light and the possibility of horizontal or vertical fixing to meet every need, thanks also to the various dimensional types. Nudo and Nudo LED can be placed side by side giving life to new compositional possibilities.

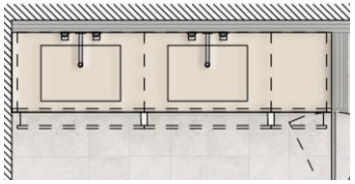
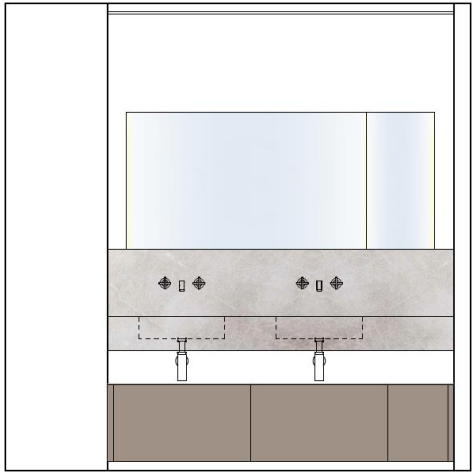
Bathrooms



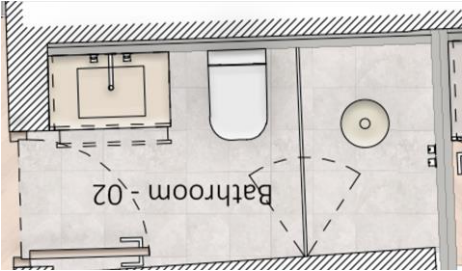
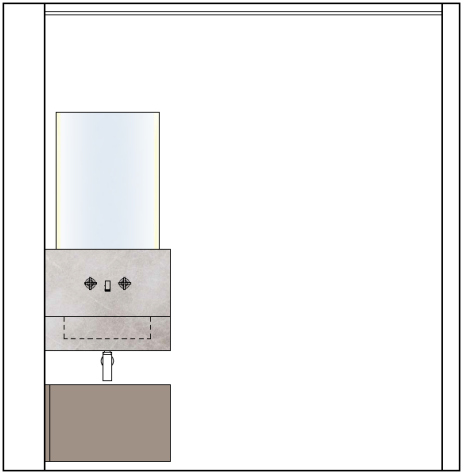
Baños Townhouse

Bathrooms Townhouse

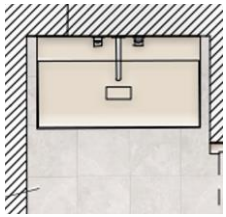
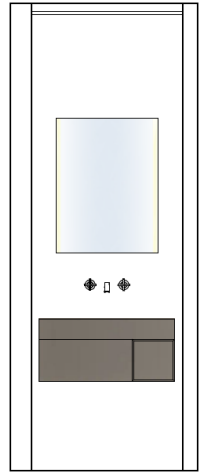
Bathroom 01



Bathroom 02



Toilet 03



**The design is orientative, depends on final measurements

Living



GET INSPIRED

🌐 www.espaciohdg.com
📷 @espaciohomedesign
📌 @espaciohomedesign



6 Showrooms

IN MALLORCA

Deliver Inspiration & Personal Assesment for your Projects

Kitchens

COCINART

Eusebi Estada 11 | 07004 Palma
971 750 072

SIEMATIC

Passeig de Mallorca 17, D | 07011 Palma
971 221 551

MODULNOVA

General Riera, 8 | 07003 Palma
971 203 052



Interior Design & Furniture

EUSEBI ESTADA

Eusebi Estada 11, B | 07004 Palma
971 759 700

SANT FELIU

Sant Feliu 6 | 07012 Palma
971 759 888

SANTA PONÇA

Illes Balears 6 | 07180 Calvià
871 005 166

Contract

Espacio

HomeDesign