

villas falcó
finishes and qualities

facades and interior

limewash render.

off-white or similar



mortero acrílico

blanco roto o similar



villas falcó

finishes and qualities

facades side wall



Majorcan stone with no joints

*Forro de mampostería de piedra calcarea
mallorquina con junta a hueso*



villas falcó
finishes and qualities

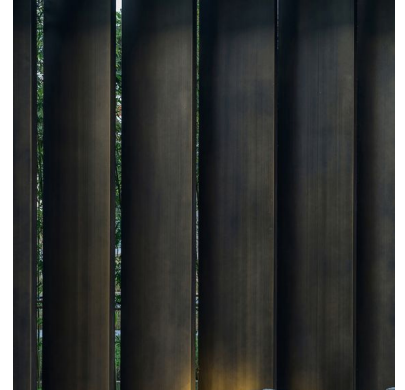
fence
plot enclosure and garage door

1.2 m height wall
majorcan traditional stone in the street side
render in the house side

0.80 m height black steel fence

1.2 m muro de *forro de mampostería de piedra calcarea mallorquina*

0.80 m de cerramiento con perfiles en U de acero negro



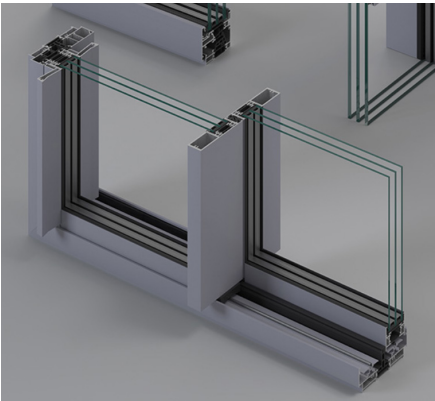
villas falcó
finishes and qualities

outdoor carpentry
sliding and folding windows

aluminium

dark colour
sliding and folding windows with closed frame

double glazing
security glass in big sheets

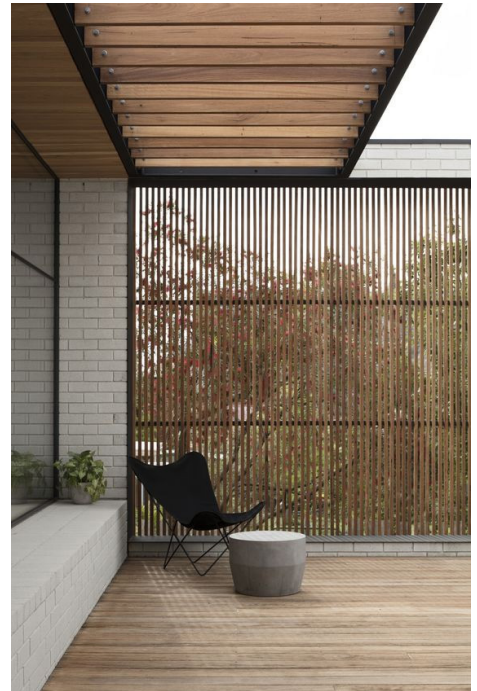


villas falcó
finishes and qualities

outdoor carpentry
sliding shutters

hidden steel frame in black or antracite color
vertical wooden slats

custom made
optional motorized



villas falcó

finishes and qualities

rooftop

conventional roof covered with gravel
eco-friendly
low maintenance

cubierta de grava



villas falcó

finishes and qualities

flooring basement

garage: polished concrete
ramp: fine scraped concrete

hall, bath, room:
natural grey stone hammered and aged
facilities room: stoneware floor
80x80 cm

placolistel skirting board

*garaje: hormigón pulido
rampa: hormigón peinado/raspado fino*

*hall, baño, lavadero, sala:
gris zarci abujardado y envejecido
zona instalaciones: gres porcelánico
80x80 cm*

rodapie placolistel



villas falcó

finishes and qualities

flooring ground floor

natural stone
balear grey / zarci grey
hammered and aged

80 x 80 cm

hidden skirting board
13 mm placolistel



pedra natural
gris balear / gris zarci
abujardado y envejecido
80 x 80 cm

rodapie oculto placolistel
13mm



villas falcó

finishes and qualities

flooring pool & terrace

joint with terrace: natural stone
balear grey / zarci grey
hammered
80 x 80 cm

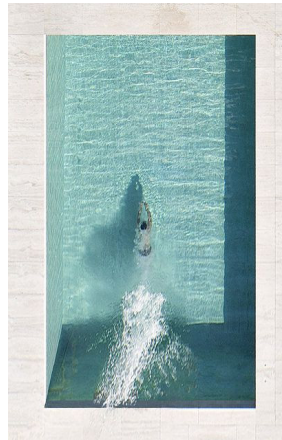
underwater:
porcelain stoneware similar to floor stone

1 m platform to hide the pool thermal cover

*encuentro con la terraza: piedra natural
gris balear / gris zarci abujardado*

*bajo el agua:
gres porcelánico similar a la piedra*

*1 metro de plataforma sumergida para ocultar la
cubierta térmica*



villas falcó

finishes and qualities

terrace

wood pergola
15 x 15 cm or similar

laminated spruce
lasur protect and tinted

outdoor shower Dexter 2A Iconico
in black matt

pergola de madera
15 x 15 cm o similar

abeto laminado
proteccion lasur con tinte

ducha exterior Dexter 2A de Iconico
en negro mate



villas falcó
finishes and qualities

flooring
first floor

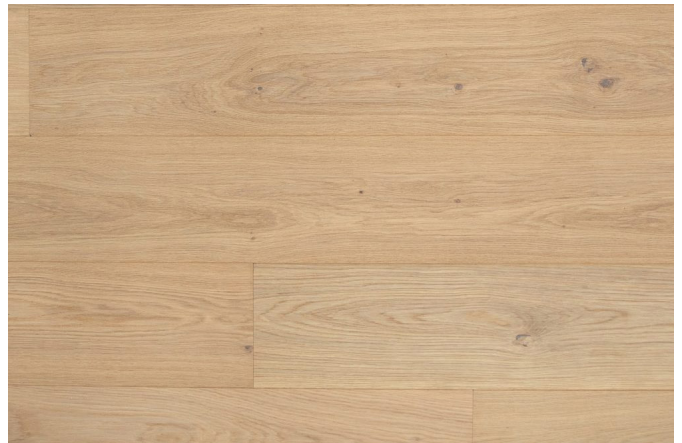
natural oak wood (light brown)
to be defined

hiddenskirting board
13 mm placolistel



*madera de roble natural
a definir*

*rodapie oculto
13 mm placolistel*



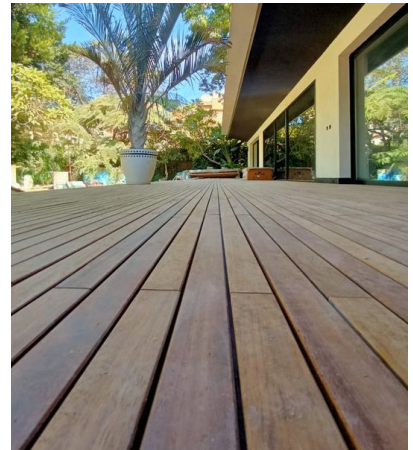
villas falcó
finishes and qualities

flooring
first floor terraces

ipé wood naturally oiled
mounted on sprung blocks
width 9,5 cm (variable length)



madera ipé aceitado
montado sobre plots
9,5 cm de ancho (largo variable)



villas falcó

finishes and qualities

stairs

VILLA 1

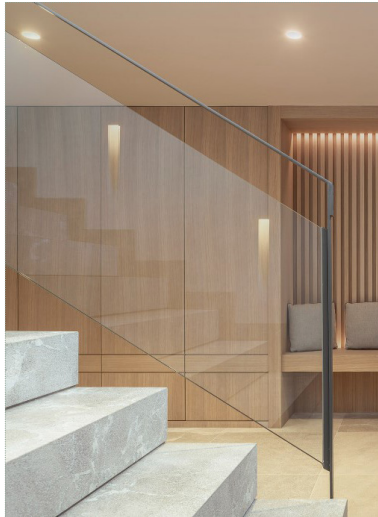
P0-P1: metallic beams (stringers) without riser.
Tread in stone.

BA-P0: Concrete stair covered with stone tiles
steel + glass railing



*PB-P1: zancas metalicas sin contrahuella
escalon de piedra*

*PS-PB: Escalera hormigón revestida en piedra
barandillas de acero y vidrio*



villas falcó

finishes and qualities

stairs VILLA 2



P0-P1: metallic beams (stringers) without riser.
The tread can be made in wood or stone.

glass railing between beams

BA-P0: concrete stair covered with stone tiles
glass railing with metallic profile in white

*PB-P1: zancas metálicas sin contrahuella
peldaño en madera o piedra*

barandilla de vidrio entre zancas

*PS-PB: escalera de hormigón revestida en piedra
barandilla de vidrio encastrada en perfil metálico
color blanco mate*



villas falcó

finishes and qualities

stairs VILLA 3

P0-P1: concrete stairs with wood or stone cover

P1-RF: concrete stairs with stone cover

BA-P0: concrete stairs with stone cover

central wooden balustrade from top to bottom

PB-P1: escalera de hormigón revestida de madera o piedra

P1-PC: escalera de hormigón revestida de piedra

PS-PB: escalera de hormigón revestida en piedra

*barandilla central de lamas de madera
arranque sobre escalonado sótano
llegada inclinado bajo losa escalera a cubierta*



villas falcó
finishes and qualities

stairs
VILLA 4

BA-PB: conventional concrete stair covered in
stone

PB-entrance: conventional concrete stair
covered in stone

P0-P1: cantilevered wooden steps

black steel balustrade

*PS-PB: escalera convencional de hormigón
peldaños en piedra*

*PB-entrada: convencional de hormigón peldaños
en piedra*

P0-P1: escalones en ménsula de madera.

barandilla acero negro



villas falcó

finishes and qualities

stairs VILLA 5

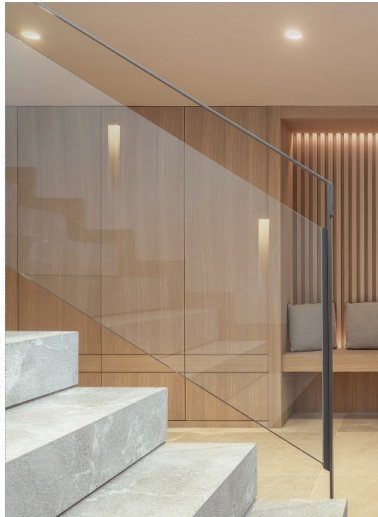
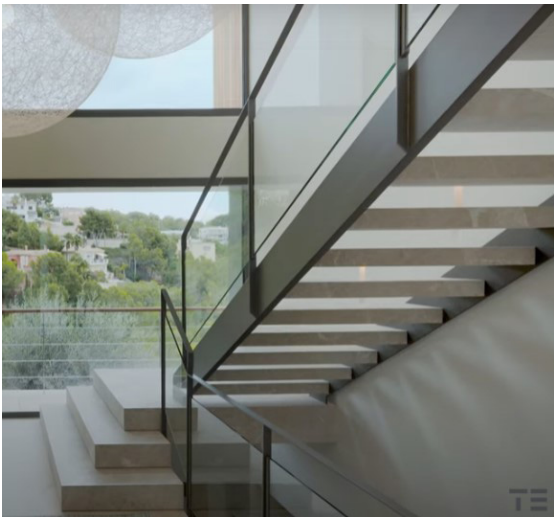
P0-P1: metallic beams (stringers) without riser.
Tread in stone.

BA-P0: Concrete stair covered with stone tiles
steel + glass railing



*PB-P1: zancas metálicas sin contrahuella
escalón de piedra*

*PS-PB: Escalera hormigón revestida en piedra
barandillas de acero y vidrio*



villas falcó

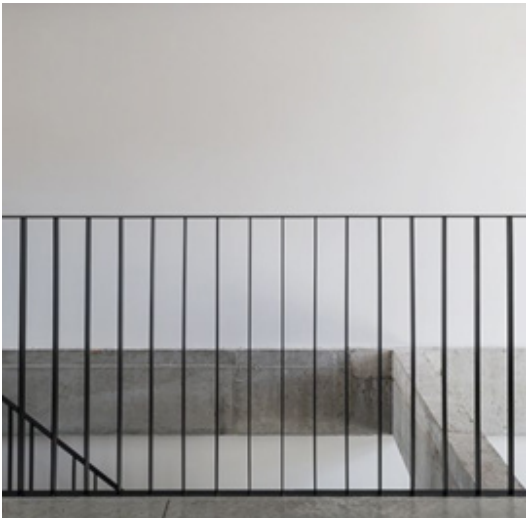
finishes and qualities

railing

black steel (iron) strips
10x30 mm
slightly raised off the ground (1 cm)



*pletinas de acero negro
10 x 30 mm
ligeramente elevadas 1 cm del suelo*



villas falcó
finishes and qualities

doors
entrance
villa 1

pivot
oak wood

*pivotante
madera de roble*



villas falcó
finishes and qualities

doors

entrance

villas 2, 4 and 5

pivot
oak wood
2 fix glass lateral panels

*pivotante
madera de roble
2 fijos laterales de vidrio*



villas falcó
finishes and qualities

doors
entrance
villa 3

pivot
interior: glass
exterior: oak wooden slats



*pivotante
madera de ro
interior vidrio
exterior: lamas de madera*

villas falcó

finishes and qualities

doors sliding

Basement and Ground floor: oak wood light brown

First floor: Lacquered off-white matt

recessed rail

Handle: Didheya i4254 matt black with lock in master bedroom and bathrooms

Sótano y Planta Baja chapadas en roble claro

Planta Piso: Lacado blanco roto mate

guía oculta

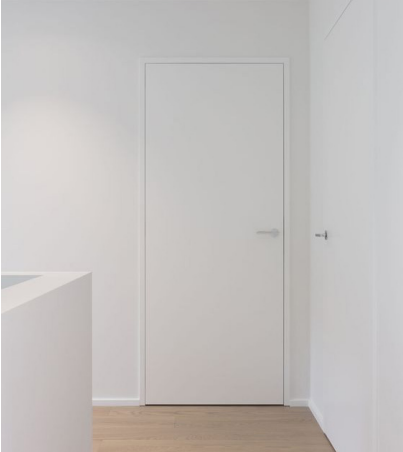
Maneta Didheya i4254 negro mate con condena en habitación principal y baños



villas falcó

finishes and qualities

doors folding



Basement and Ground floor:
oak wood light brown
First floor: Lacquered off-white matt

recessed frame and flashing
conection with lower ceiling:
fix panel on top

olivari handle matt black
model lama L with lock in master bedroom and
bathrooms

*Sótano y planta baja: madera de roble
Planta Piso: lacado blanco roto mate*

*marco enrasado
fijo superior en encuentro con falso techo bajo*

*maneta negro mate de olivari
modelo lama L con condena en habitación
principal y baños*



villas falcó
finishes and qualities

wardrobes

folding doors
smooth off-white matt lacquered wood
RAL 9010

integrated handles
automatic interior LED light

interior with melamine wood

*puertas abatibles de madera lacada en blanco
roto mate lisas (RAL 9010)
tiradores integrados, iluminacion LED interior
automatica*

interior de melamina acabado roble



villas falcó

finishes and qualities

bathrooms

basin

custom made basin in natural stone
gris balear / zarci grey

wooden drawers below basin

backlit mirror

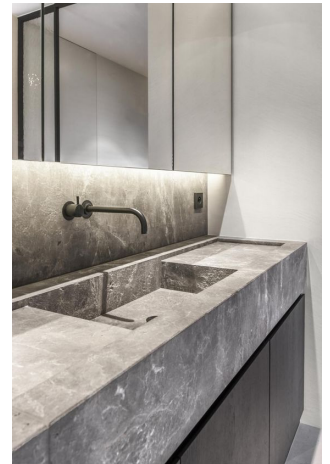
faucet: vola 121x
matt black, wall mounted

*lavabo a medida en piedra natural
gris balear / gris zarci*

cajones de madera bajo el lavabo

espejo retroiluminado

*grifo mural monomando 121x
negro mate*



villas falcó
finishes and qualities

bathrooms
towel warmer

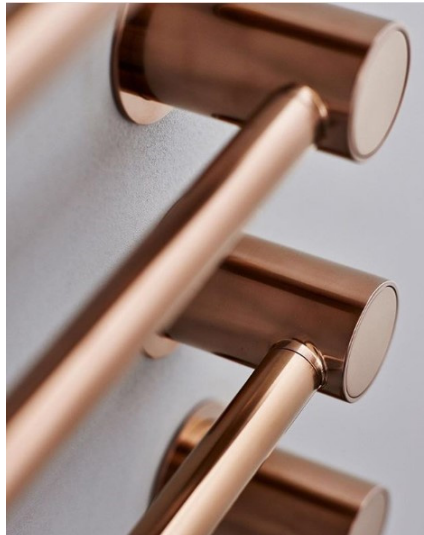
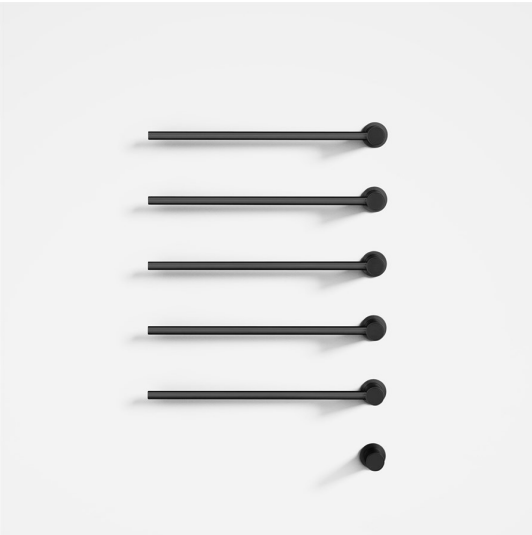
electric towel warmer
vola T39EL
4 elements

matt black

only in Master bathroom

*toallero eléctrico vola T39EL
4 elementos
negro mate*

solo en el baño principal



villas falcó
finishes and qualities

bathrooms
shower

custom made shower plate in grey stone (same
as flooring)
linear hidden drain

one stone wall with longitudinal niche

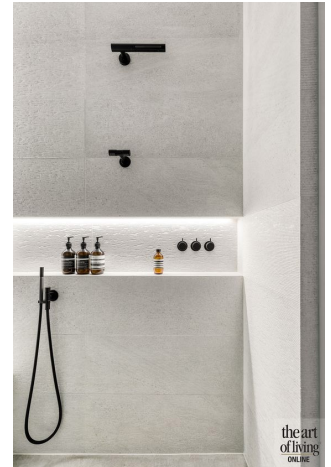
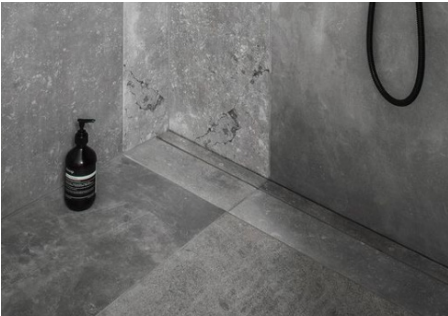
2471-061A: wall-mounted hand shower with
single lever mixer

060A head shower, round, ceiling-mounted
Matt black

*plato de ducha a medida en piedra natural
desagüe longitudinal oculto*

*una pared revestida de piedra con nicho
logitudinal*

*2471-061A: teleducha y mezclador mural
060A rociador de techo redondo
negro mate*



villas falcó
finishes and qualities

bathrooms
bathtub

solid surface silky white
bathtub Iconico model B19

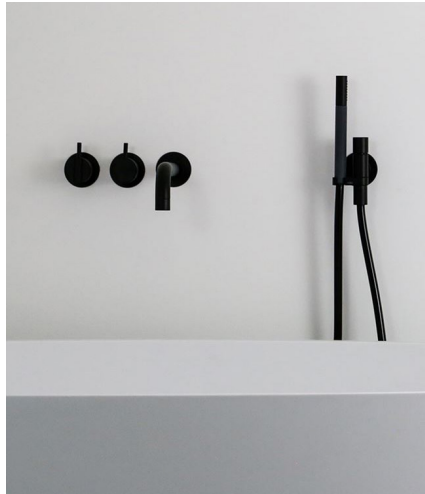
vola 2411C-071: wall-mounted hand shower
with single lever mixer and spout

matt black



*bañera exenta de solid surface
Modelo B19 de Iconico*

*vola 2411C-071
teleducha, mezclador mural y caño fijo*



villas falcó

finishes and qualities

bathrooms

bath tub
villa 3

solid surface silky white
bathtub Iconico model B19

vola FS1: floor-mounted spout, hand shower
with single lever mixer



bañera exenta de solid surface

vola FS1: grifo, teleducha y mezclador de suelo



villas falcó
finishes and qualities

bathrooms

wc

wall hung , rimless and soft-closing seat and
cover

duravit Me by Starck matt white

flush plate Vola A85 matt black

*suspendido, rimless, tapa y asiento con caída
amortiguada*

duravit Me by starck blanco mate

pulsador Vola A85 negro mate

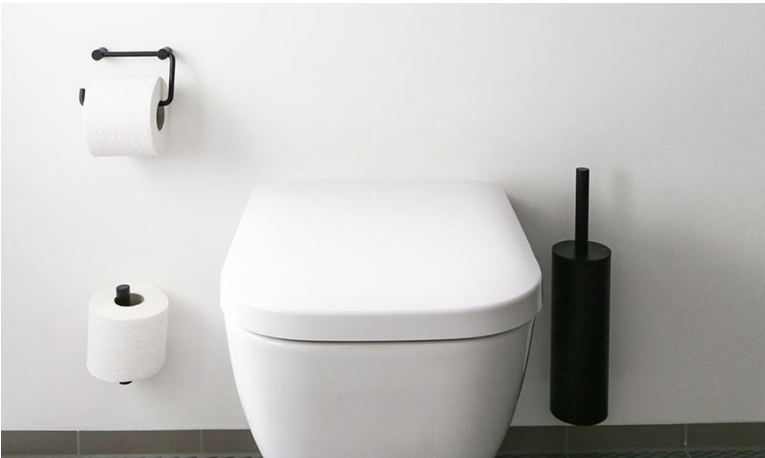


villas falcó
finishes and qualities

bathrooms
accessories

T15-BP Vola towel holder matt black
T12-BP Vola toilet roll holder matt black
T17 Vola towel hook matt black
T33 Vola toilet brush holder matt black

T15-BP Vola toallero negro mate
T12-BP Vola portarrollos negro mate
T17 Vola percha negro mate
T33 Vola escobillero negro mate



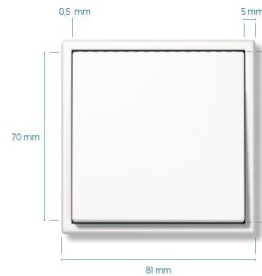
villas falcó
finishes and qualities

switches and sockets
JUNG

LS 990
minimal frame
duroplast
matt white



*LS 990
marco minimo
duroplast (plastico)
blanco mate*



villas falcó
finishes and qualities

audio system
recessed speakers

Dali Phantom Serie E

*LS 990
marco mínimo
duroplast (plástico)
blanco mate*



villas falcó

finishes and qualities

automation system KNX

KNX automation system to control:
under floor heating
air conditioning
lighting in Living room and master bedroom

sistema domótica KNX

*controla:
suelo radiante
climatización
iluminación en salón y habitación principal*



villas falcó
finishes and qualities

electric vehicle charger

3 charging points in garage
2 charging points in outdoor parking

*3 puntos de carga en el garaje
2 puntos de carga en el parking exterior*

