



TERRAZAS DE CORTESÍN  
*Seaviews*



Floor Plans

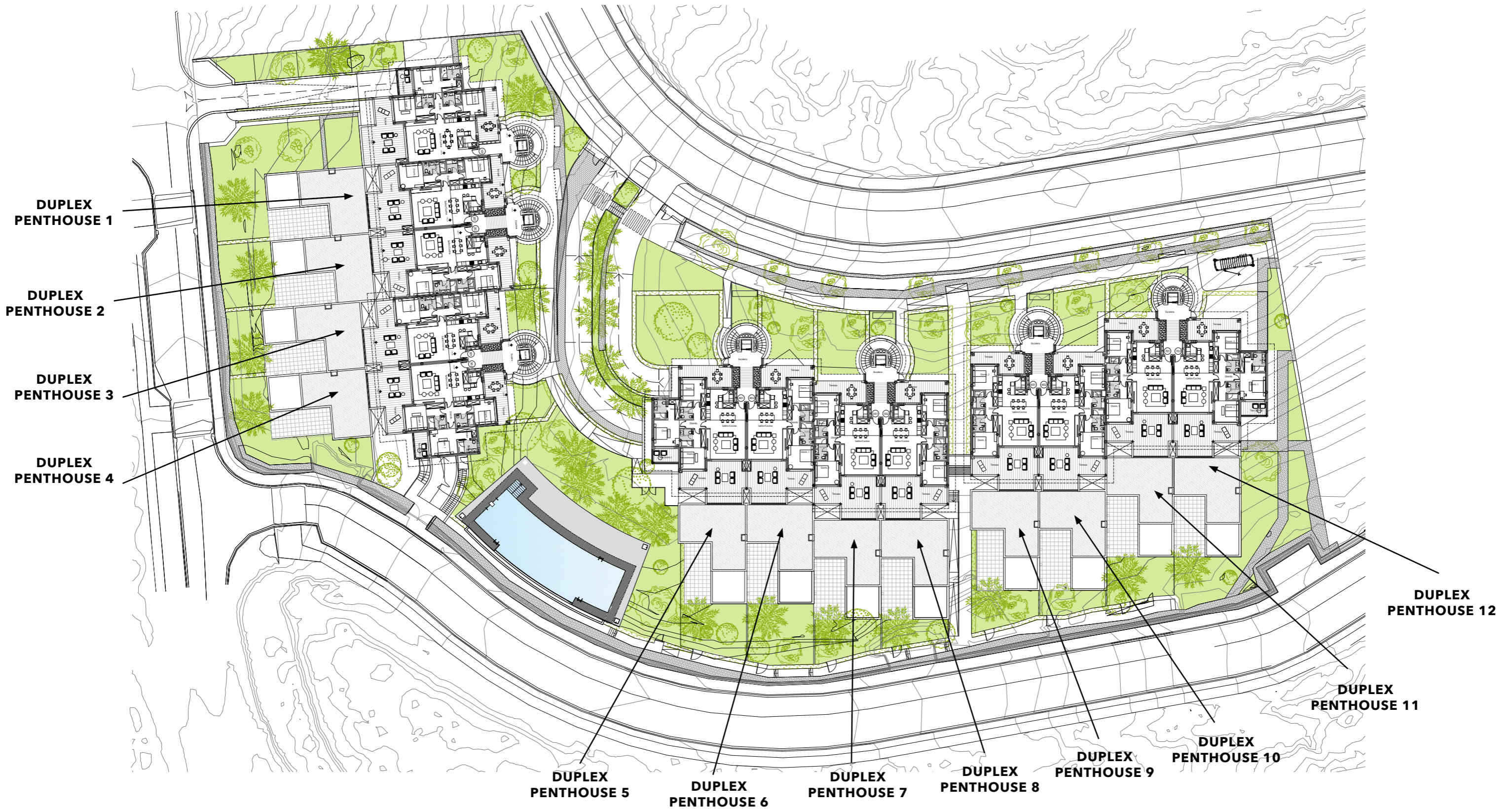


# ZONING PLAN

GROUND FLOOR



TERRAZAS DE CORTESÍN  
*Sea views*



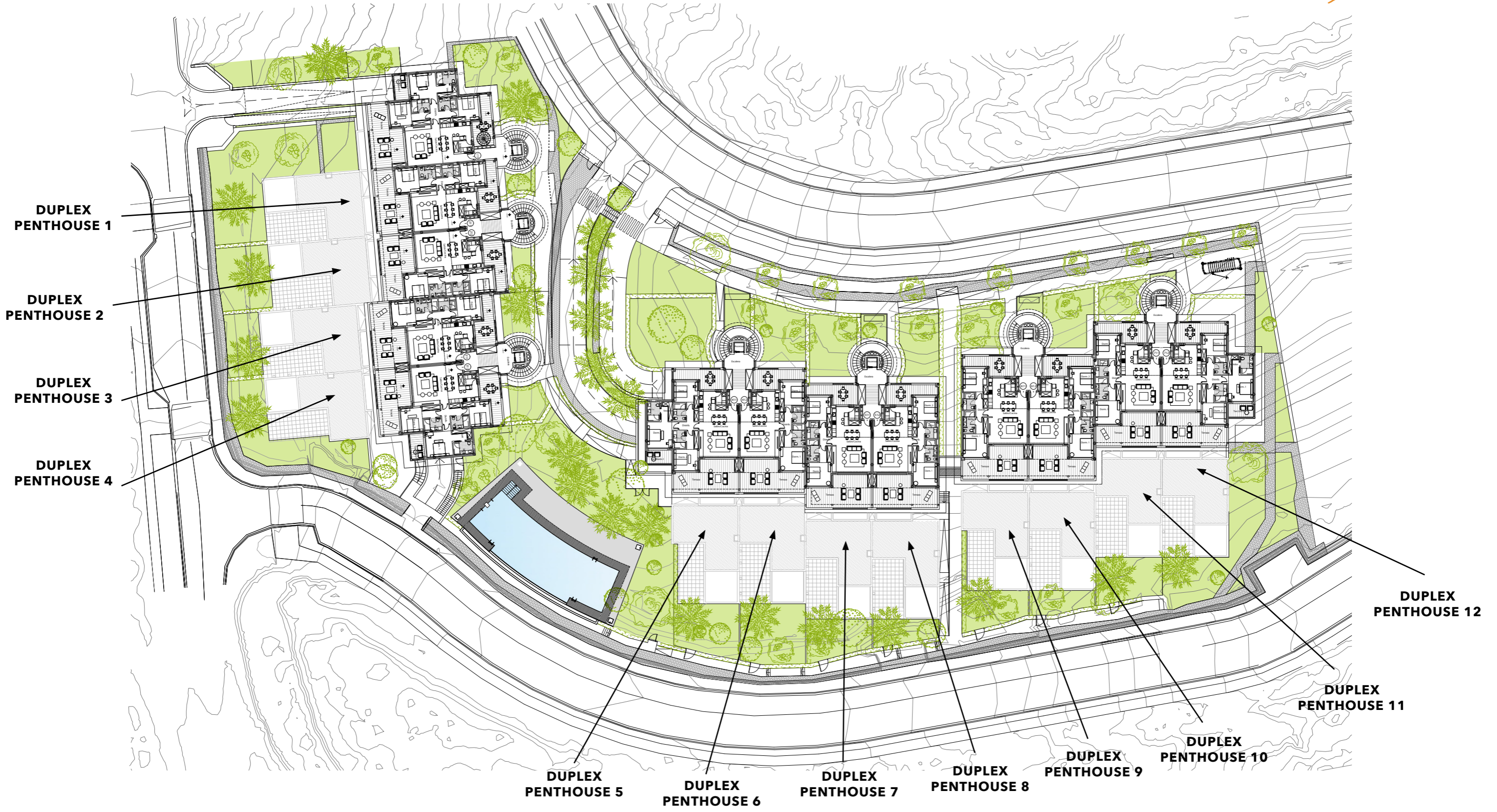


# ZONING PLAN

FIRST FLOOR



TERRAZAS DE CORTESÍN  
*Sea views*



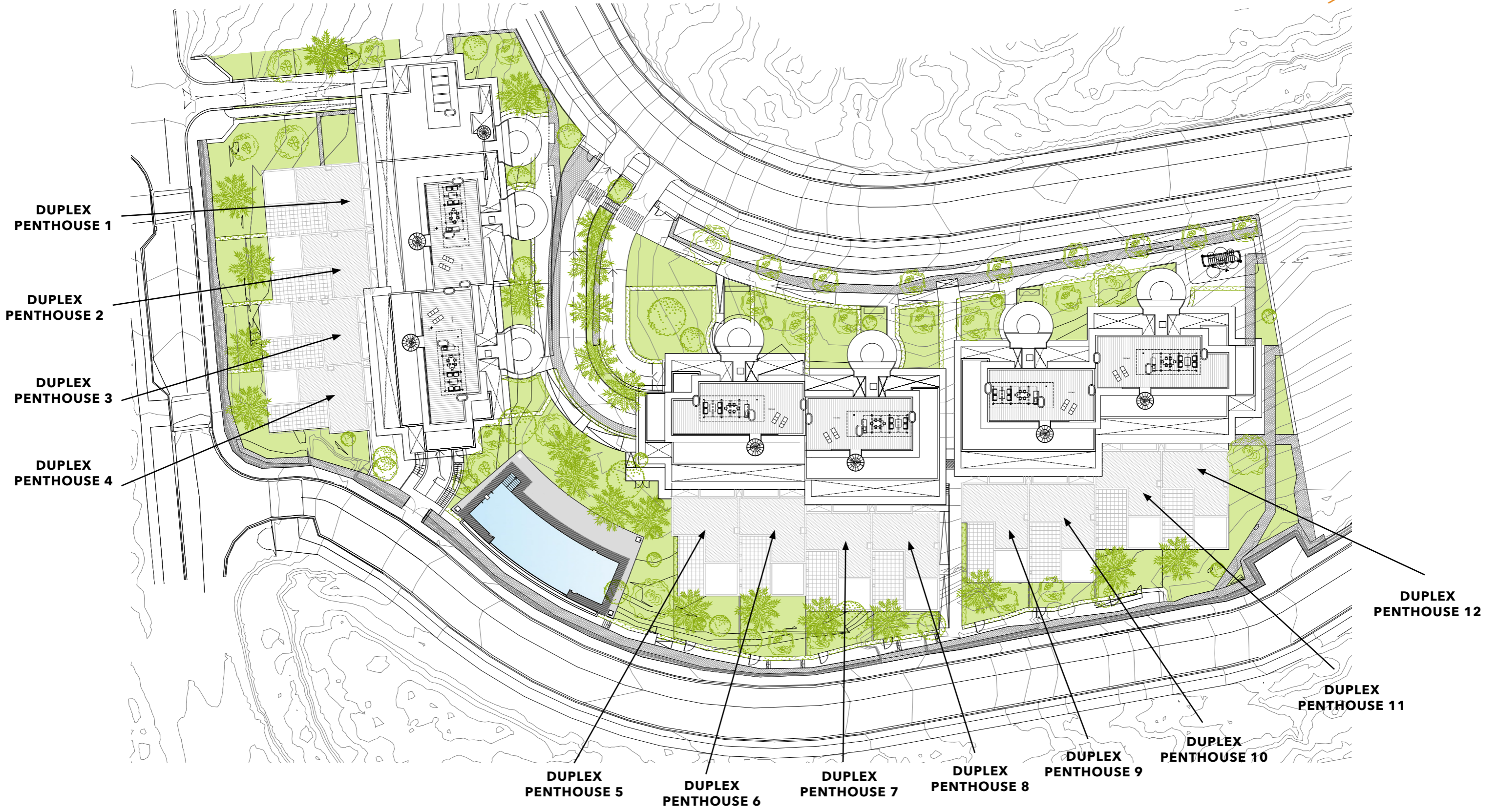


# ZONING PLAN

TERRACE FLOOR



TERRAZAS DE CORTESÍN  
*Sea views*



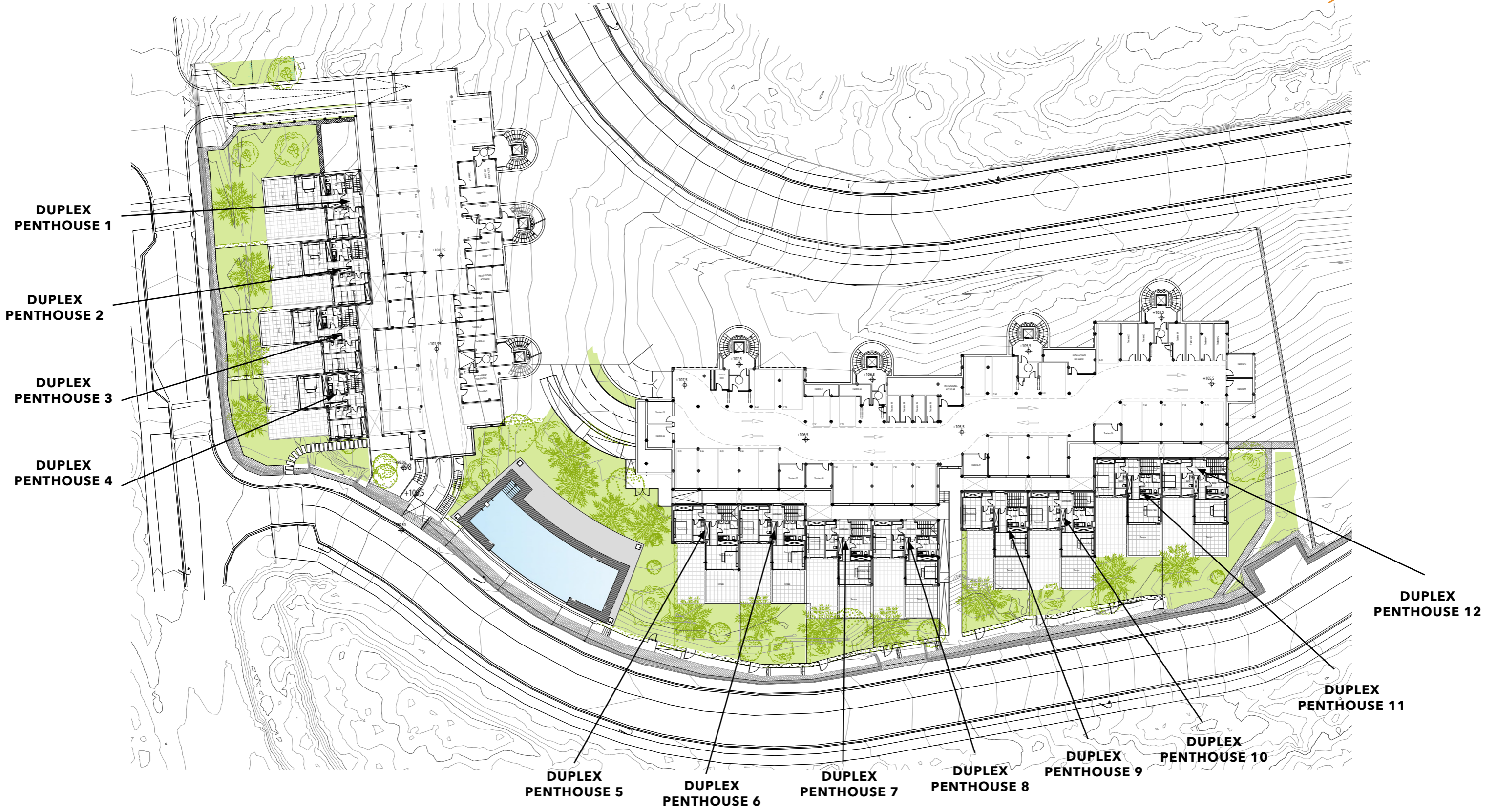


# ZONING PLAN

BASEMENT -1 FLOOR



TERRAZAS DE CORTESÍN  
*Seaviews*



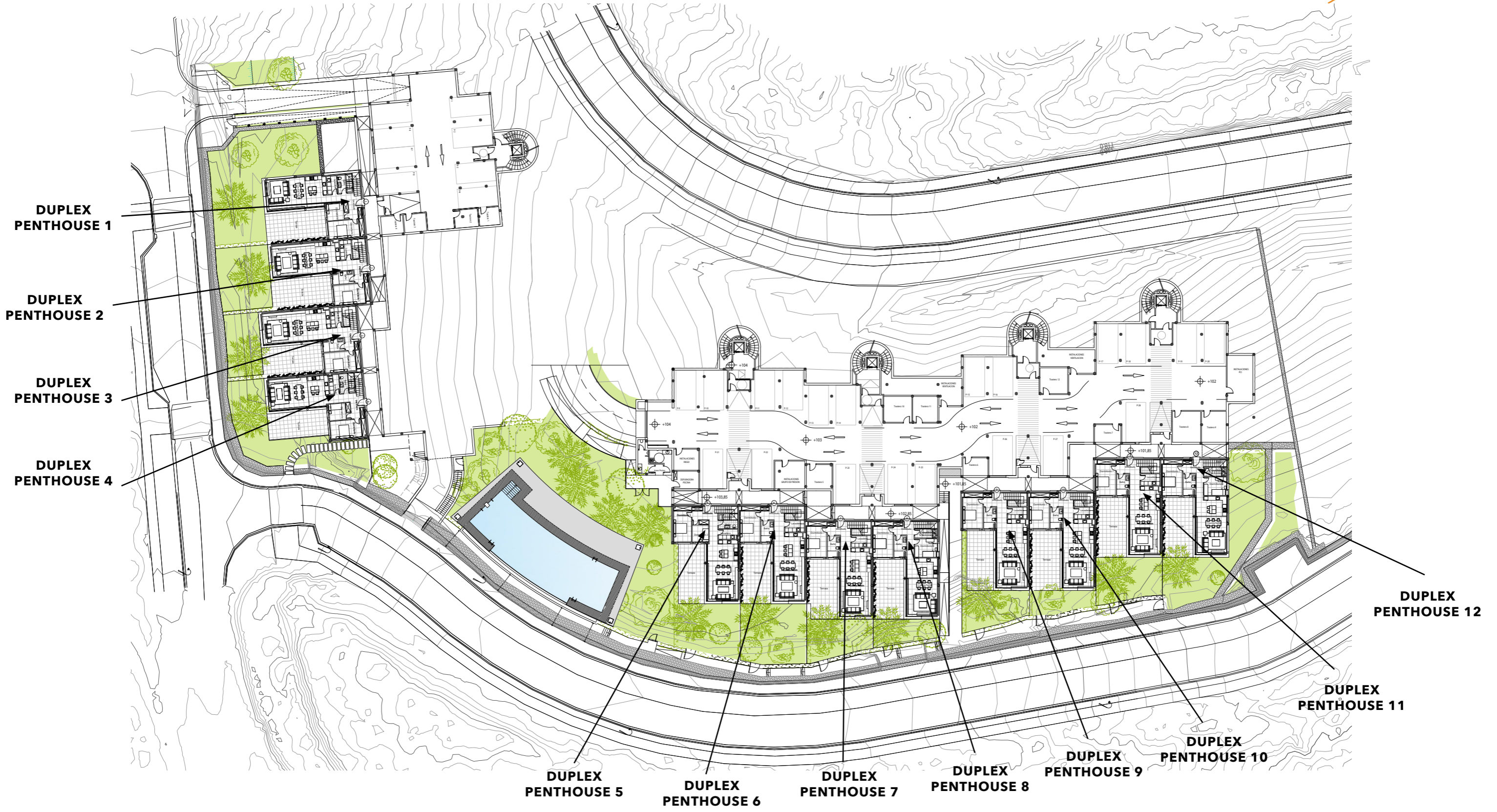


# ZONING PLAN

BASEMENT -2 FLOOR



TERRAZAS DE CORTESÍN  
*Sea views*



DUPLEX  
PENTHOUSE 1

DUPLEX  
PENTHOUSE 2

DUPLEX  
PENTHOUSE 3

DUPLEX  
PENTHOUSE 4

DUPLEX  
PENTHOUSE 5

DUPLEX  
PENTHOUSE 6

DUPLEX  
PENTHOUSE 7

DUPLEX  
PENTHOUSE 8

DUPLEX  
PENTHOUSE 9

DUPLEX  
PENTHOUSE 10

DUPLEX  
PENTHOUSE 11

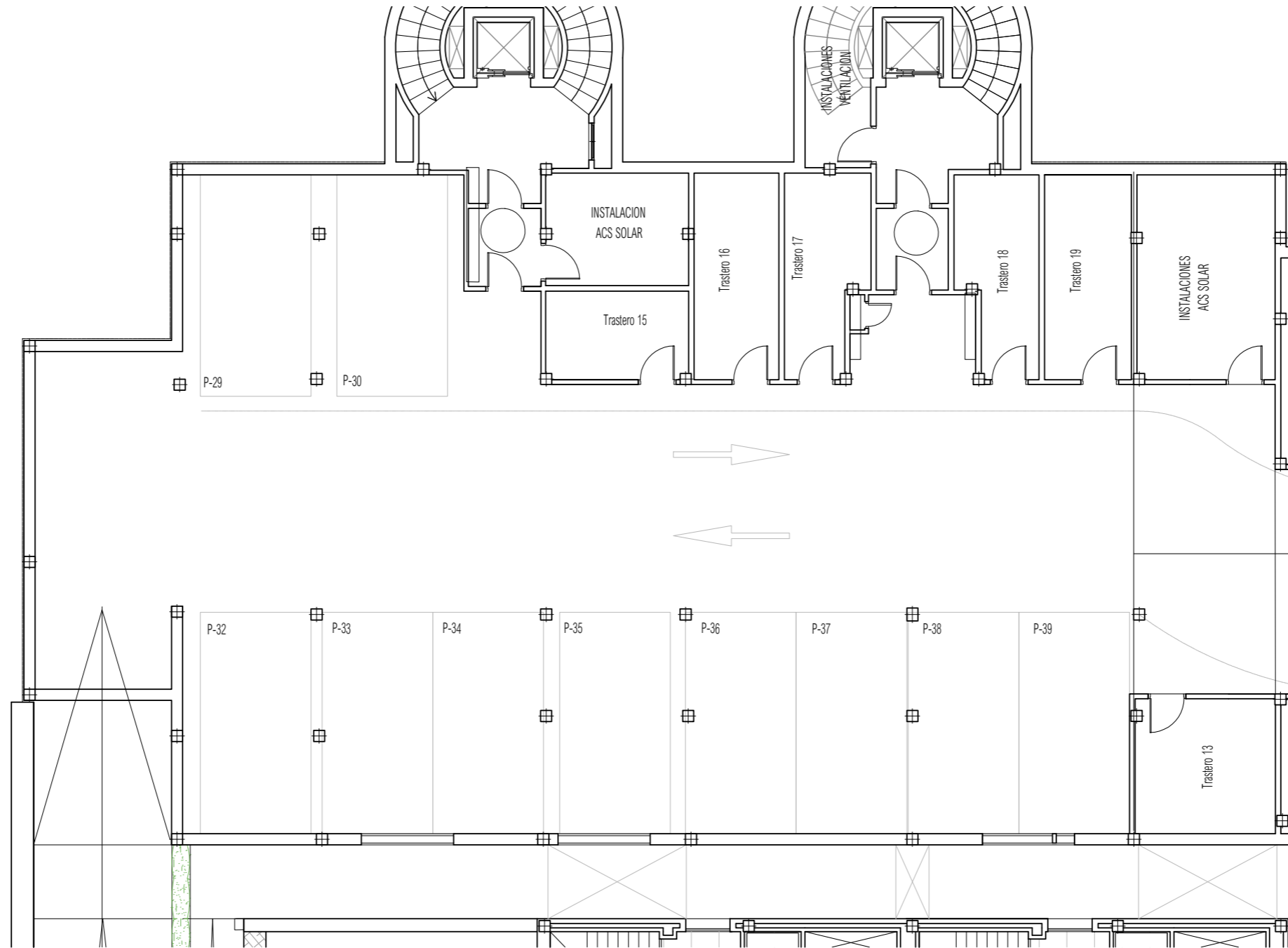
DUPLEX  
PENTHOUSE 12



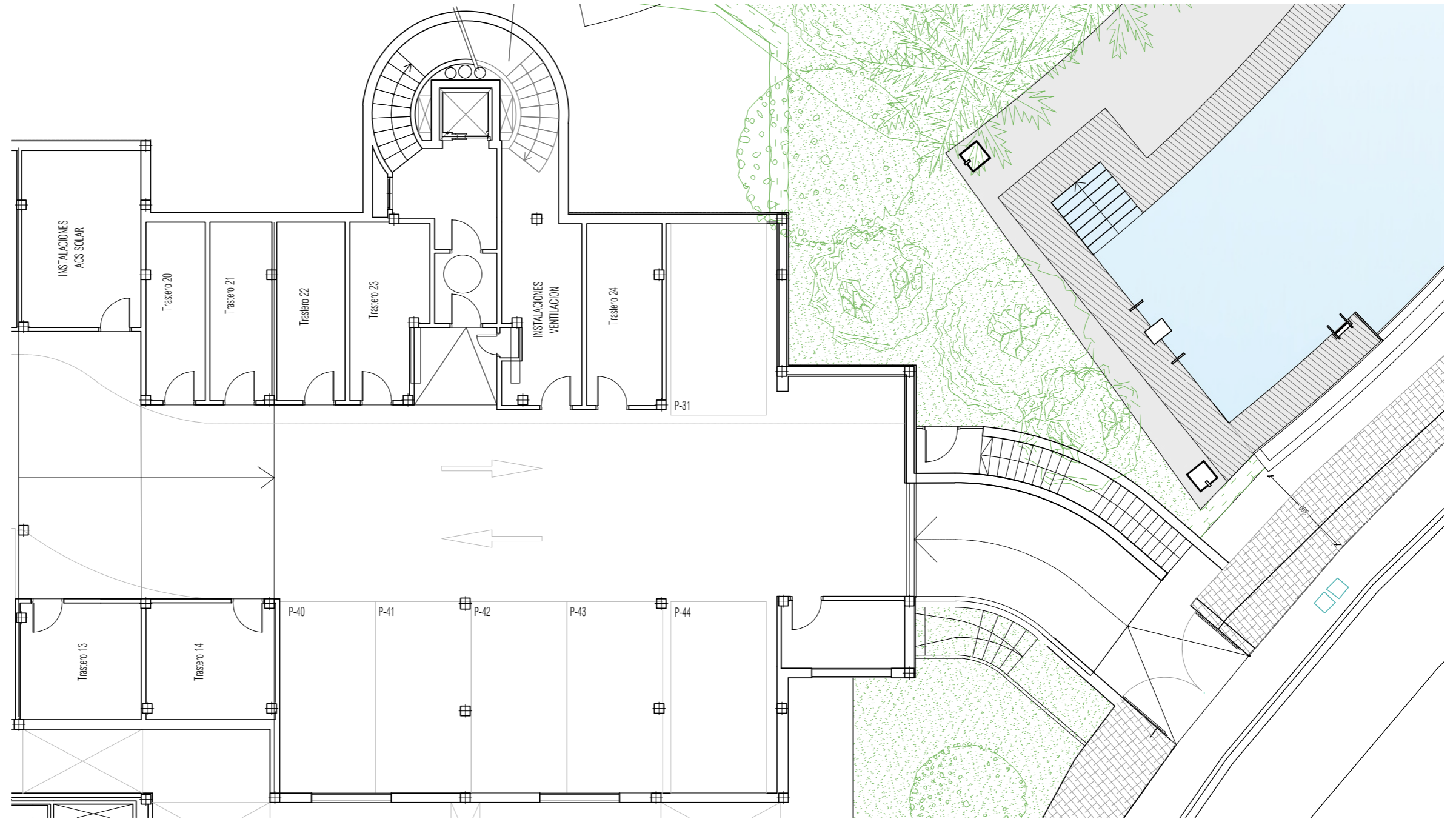
Information and graphic material are purely informative and have no contractual value. They may be subject to changes due to technical or legal requirements or by initiative of the Project Management team. Gardening, decoration and furniture are for the purpose of decoration and are non-binding. The remaining information referring to the Royal Decree 218/2005 from the Andalusian Government is available in our offices.



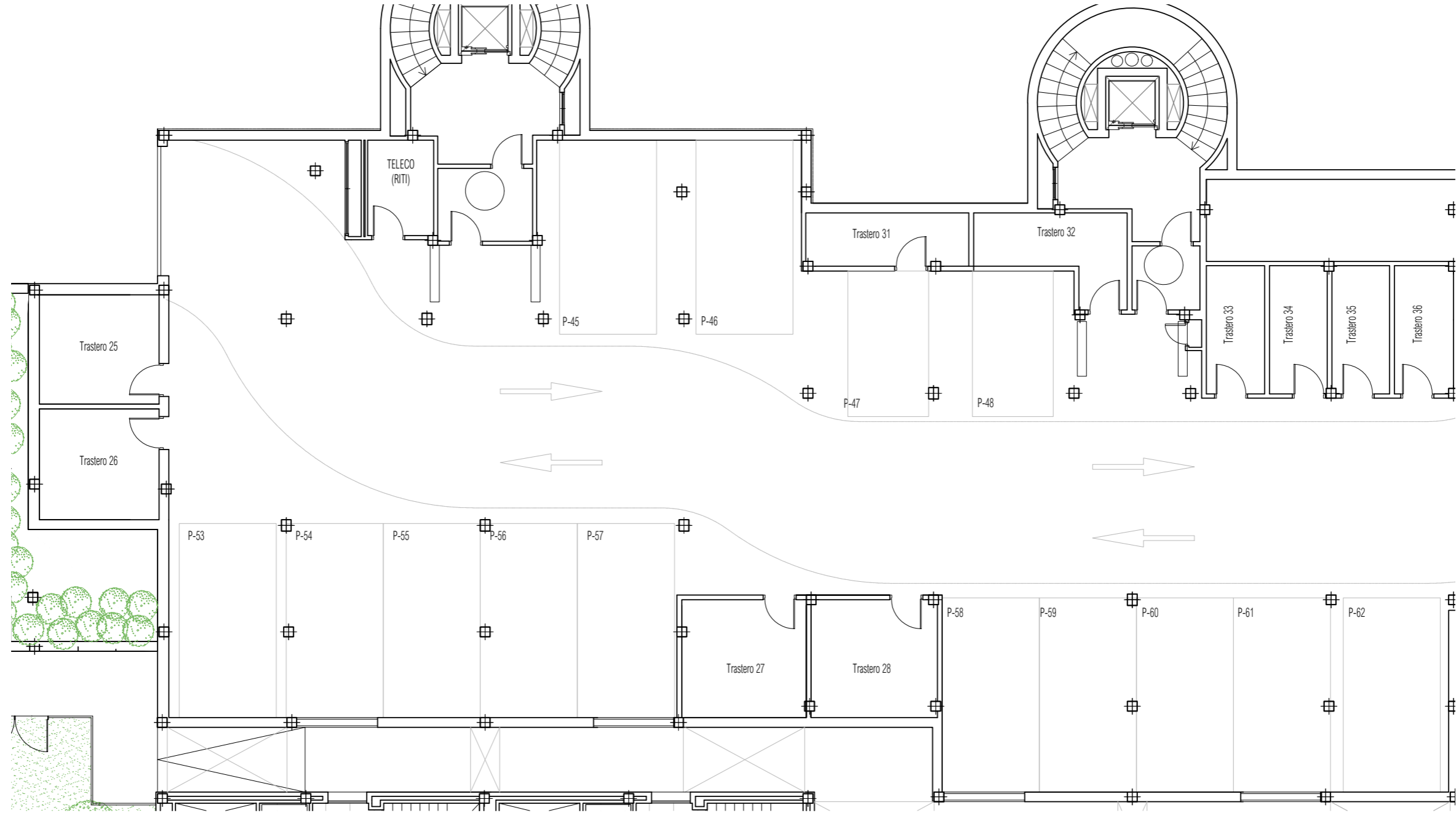




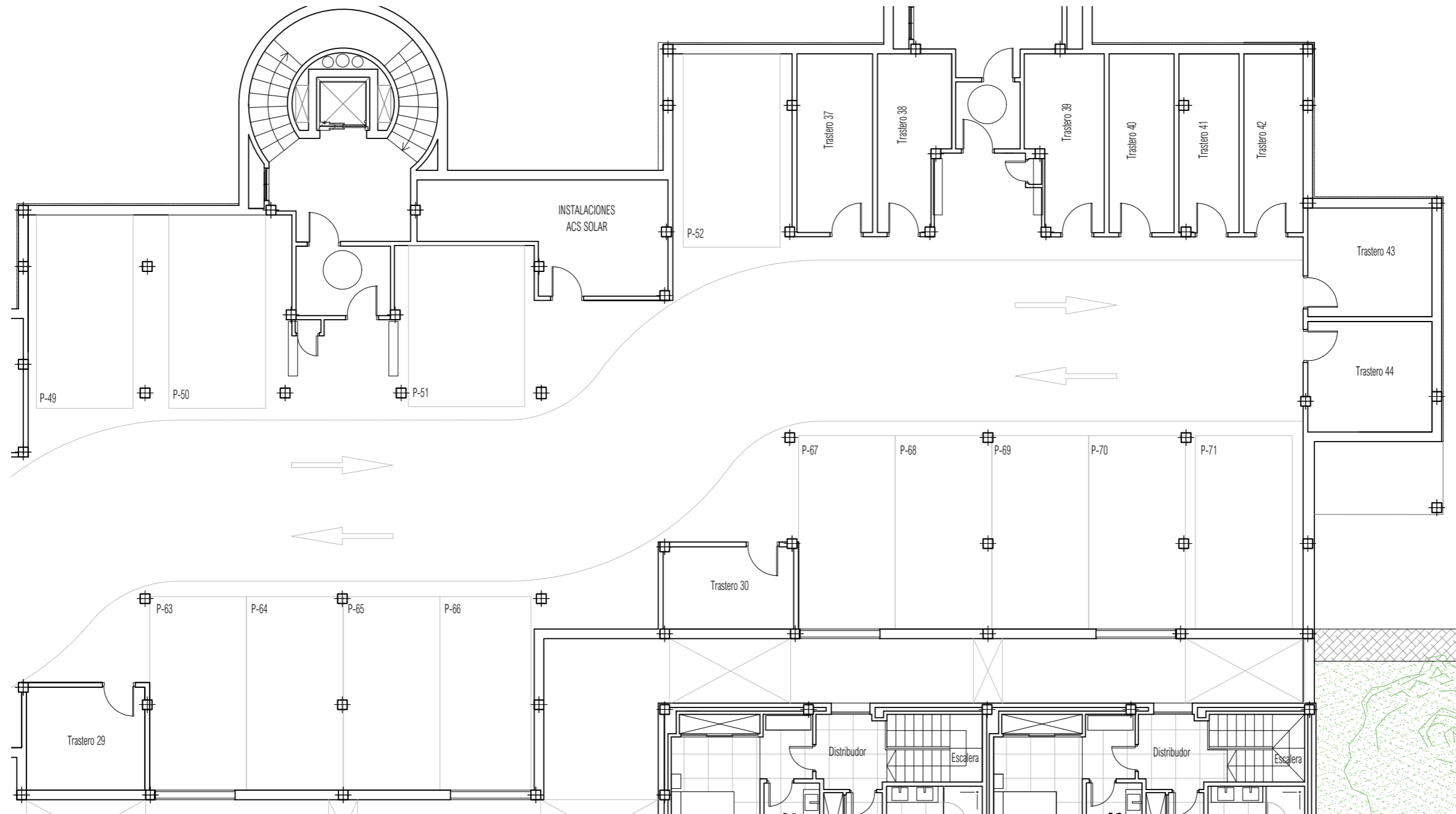




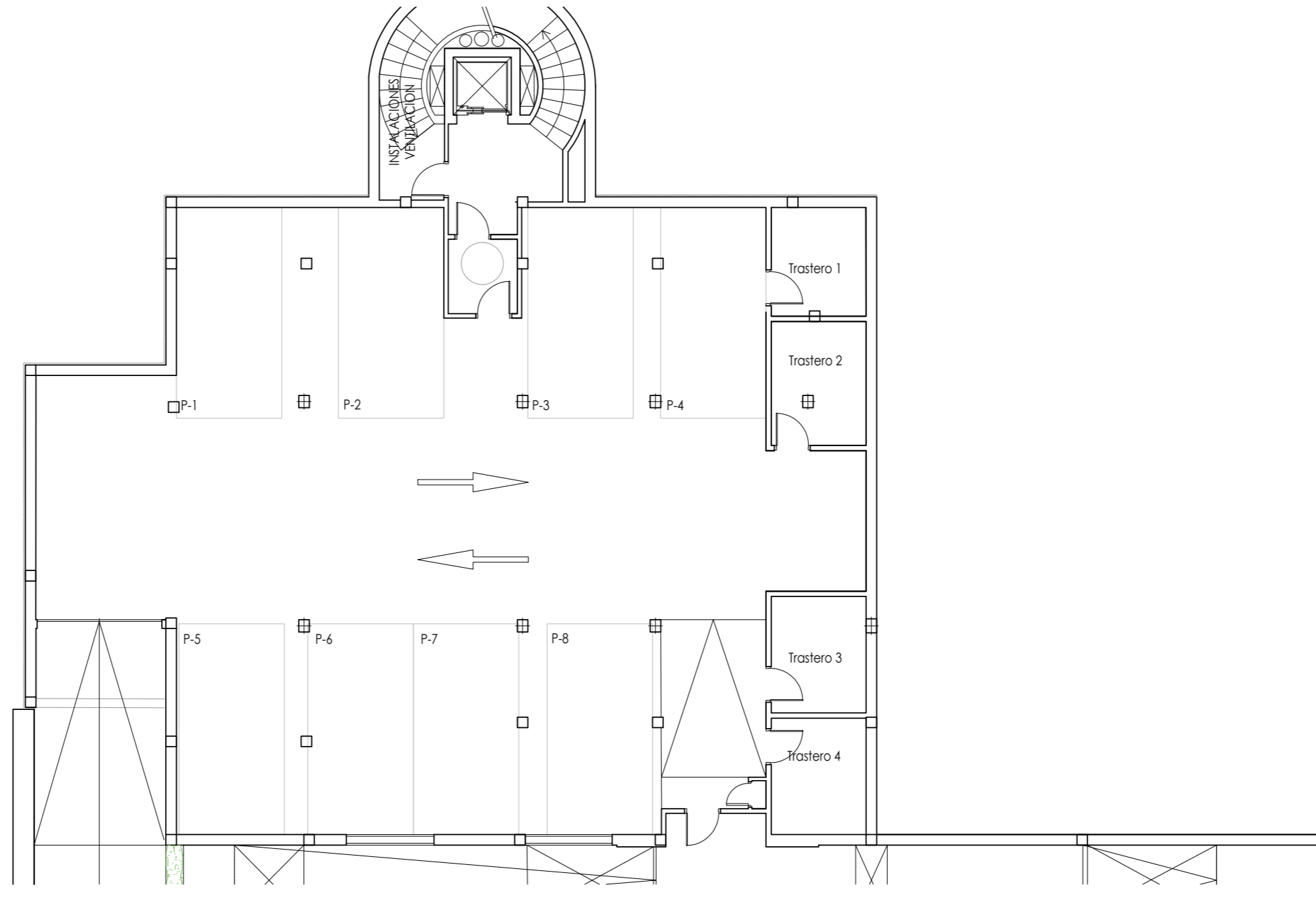


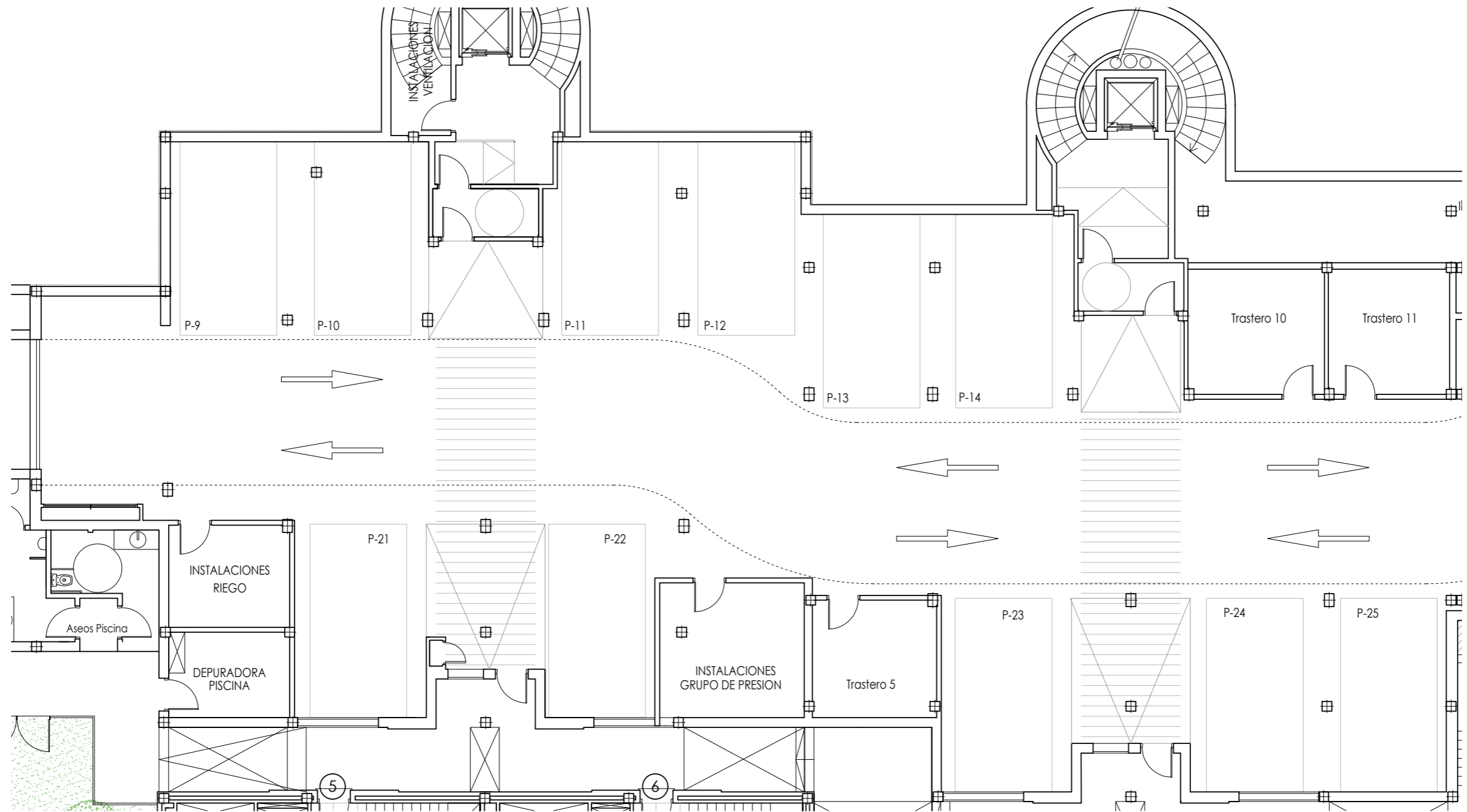




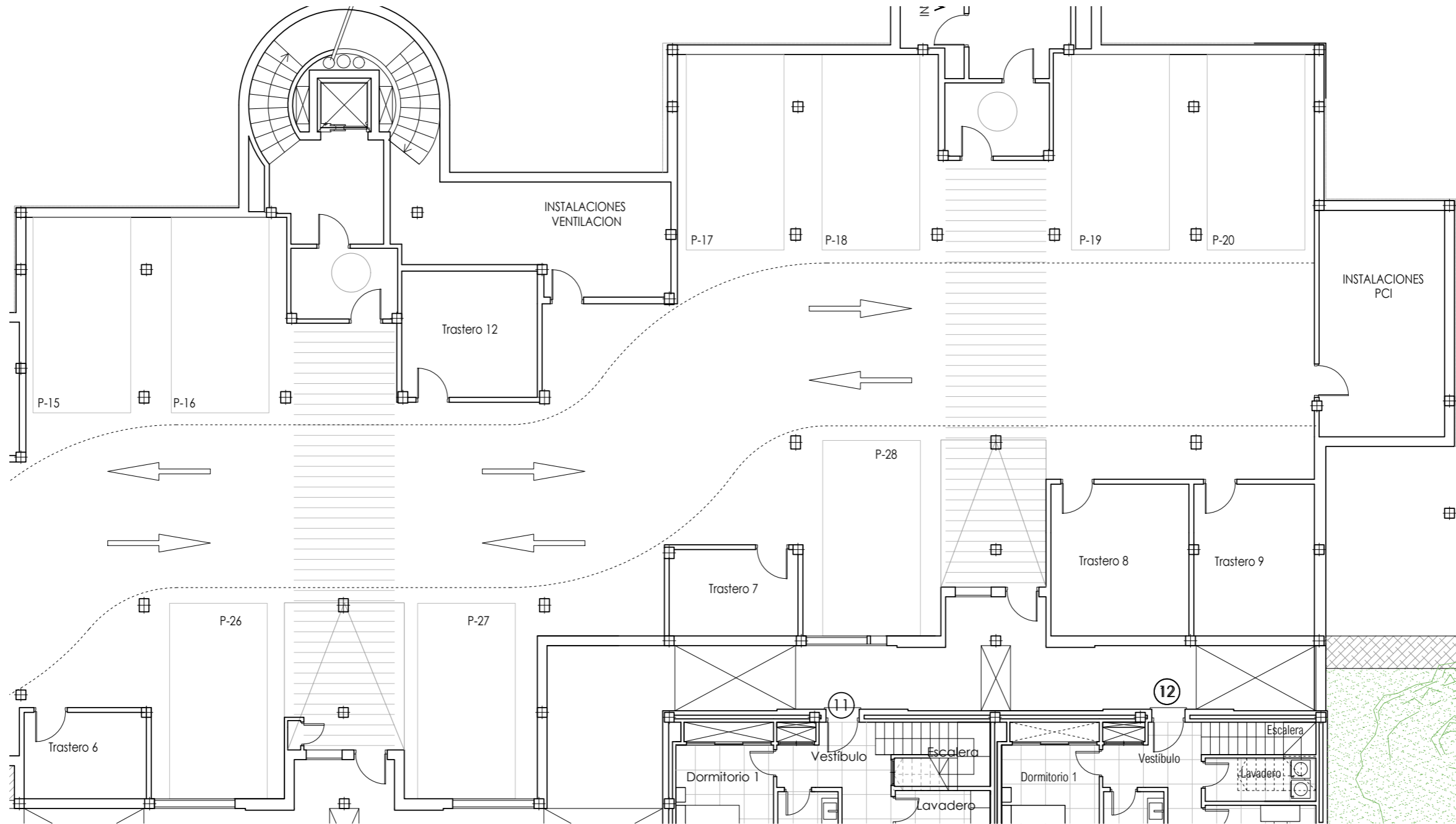














TERRAZAS DE CORTESÍN  
*Seaviews*



APARTMENTS





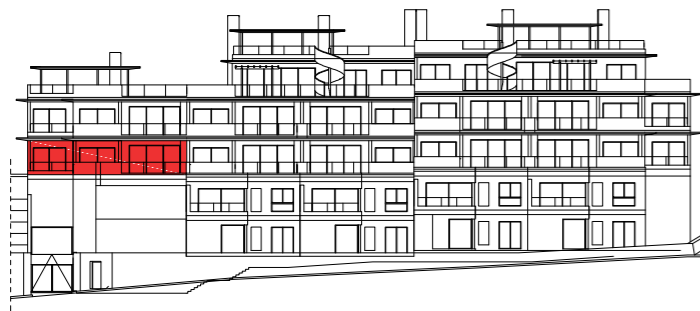
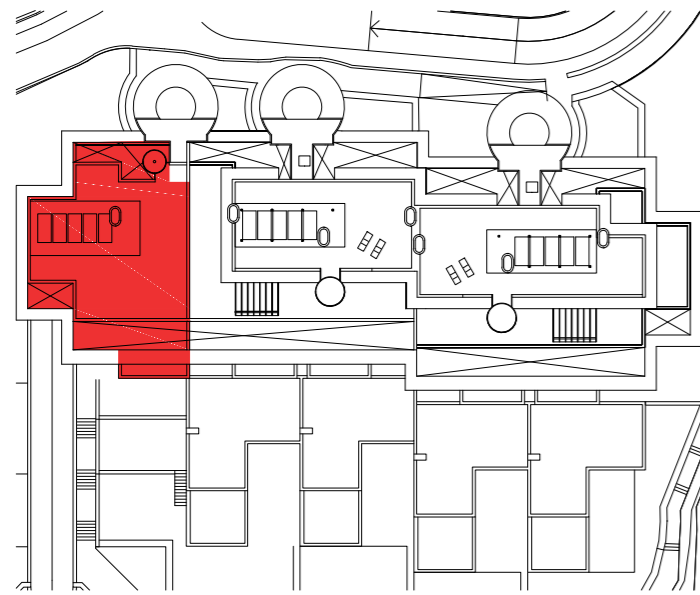
# APARTMENT 101

3 BEDROOMS

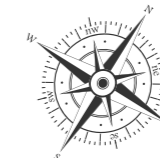
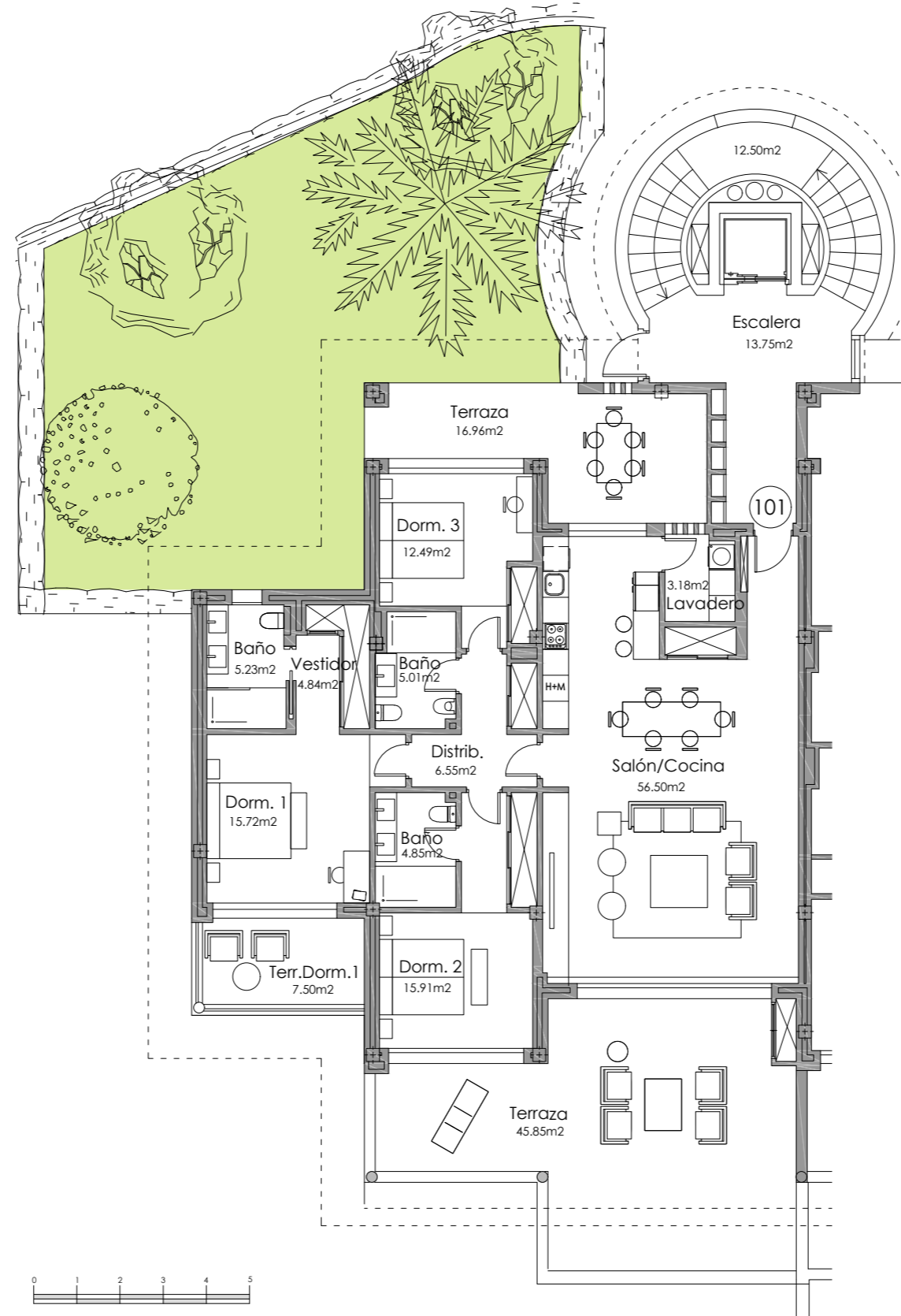
BLOCK A. STAIRCASE 1 GROUND FLOOR



TERRAZAS DE CORTESÍN  
*Seaviews*



Block A



SECTOR UR-10A "FINCA EL CORTESÍN" CASARES, MÁLAGA

SURFACES	
Surface of constructed area	154,52 m <sup>2</sup>
Surface of communal area	6,59 m <sup>2</sup>
Surface of terrace area	78,77 m <sup>2</sup>
<b>TOTAL SURFACE</b>	<b>239,88 m<sup>2</sup></b>

Surface of utilised area	130,31 m <sup>2</sup>
Surface of utilised terrace area	70,31 m <sup>2</sup>
Surface of utilised garden area	152,42 m <sup>2</sup>



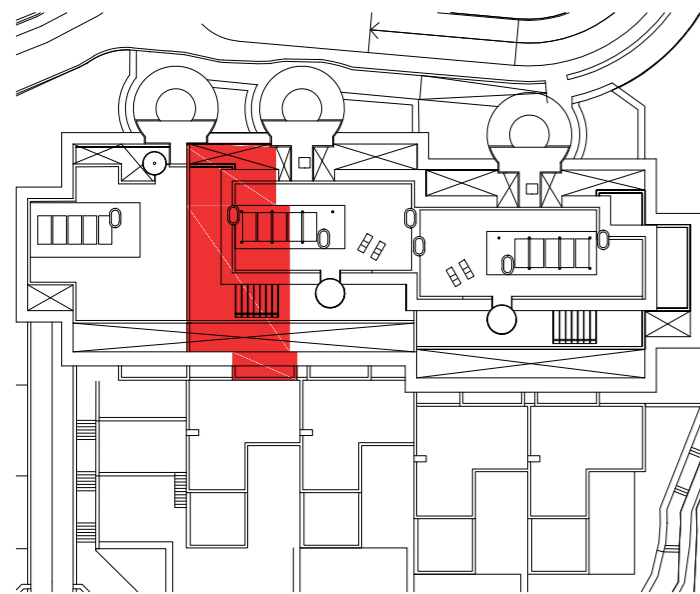
# APARTMENT 211

2 BEDROOMS

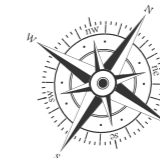
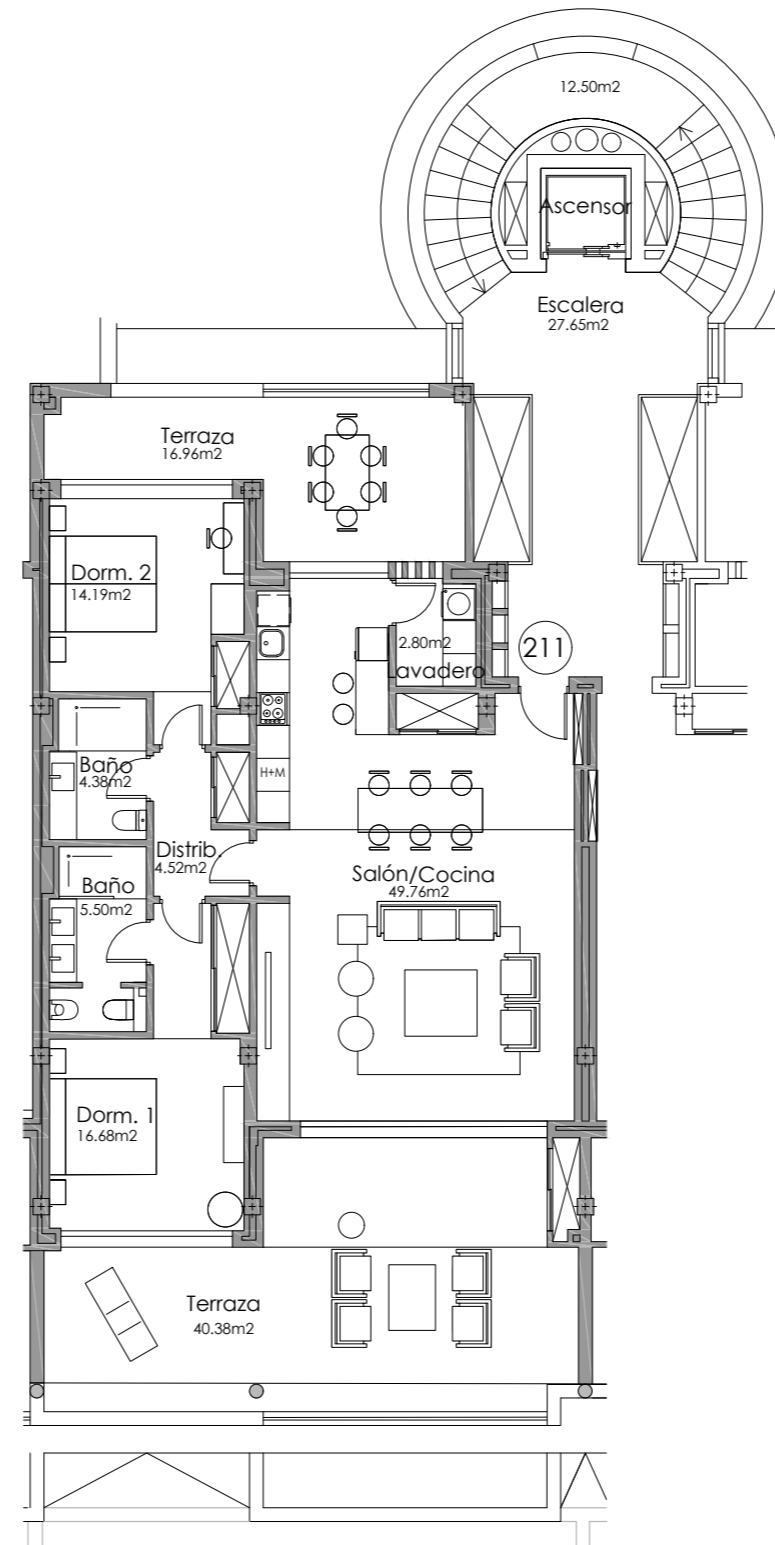
BLOCK A. STAIRCASE 2 FIRST FLOOR



TERRAZAS DE CORTESÍN  
*Seaviews*



Block A



SECTOR UR-10A "FINCA EL CORTESÍN" CASARES, MÁLAGA

**SURFACES**

Surface of constructed area	116,46 m <sup>2</sup>
Surface of communal area	4,16 m <sup>2</sup>
Surface of terrace area	68,16 m <sup>2</sup>

**TOTAL SURFACE** 189,59 m<sup>2</sup>

Surface of utilised area	97,86 m <sup>2</sup>
Surface of utilised terrace area	57,34 m <sup>2</sup>





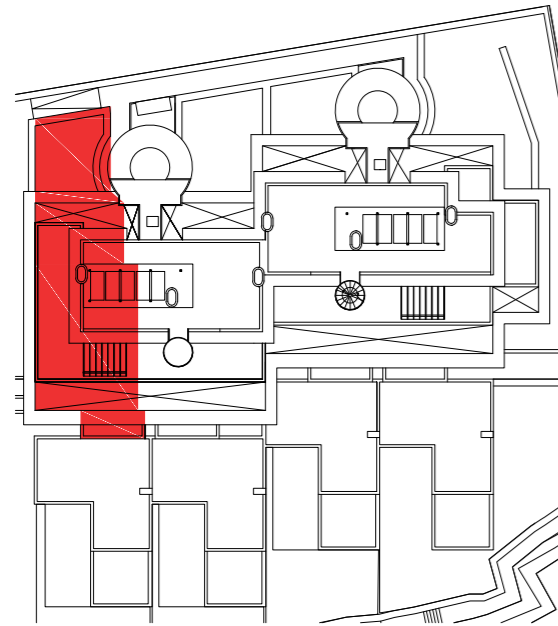
# APARTMENT 701

2 BEDROOMS

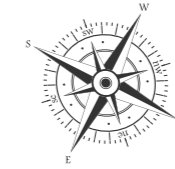
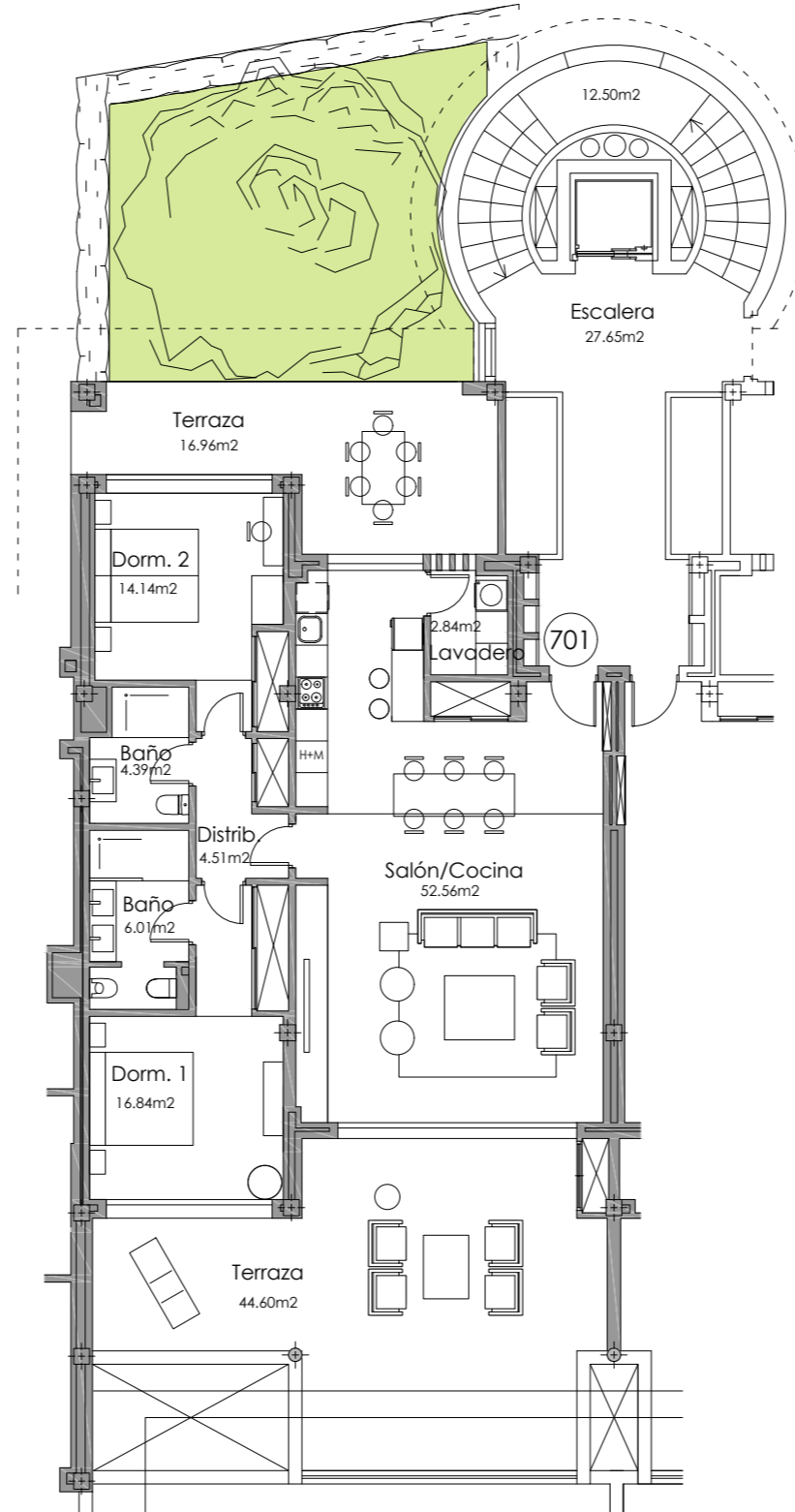
BLOCK C. STAIRCASE 7 GROUND FLOOR



TERRAZAS DE CORTESÍN  
*Sea views*



Block C



SECTOR UR-10A "FINCA EL CORTESÍN" CASARES, MÁLAGA

**SURFACES**

Surface of constructed area	119,40 m <sup>2</sup>
Surface of communal area	5,09 m <sup>2</sup>
Surface of terrace area	68,29 m <sup>2</sup>

**TOTAL SURFACE** 192,78 m<sup>2</sup>

Surface of utilised area	100,30 m <sup>2</sup>
Surface of utilised terrace area	61,56 m <sup>2</sup>
Surface of utilised garden area	47,43 m <sup>2</sup>



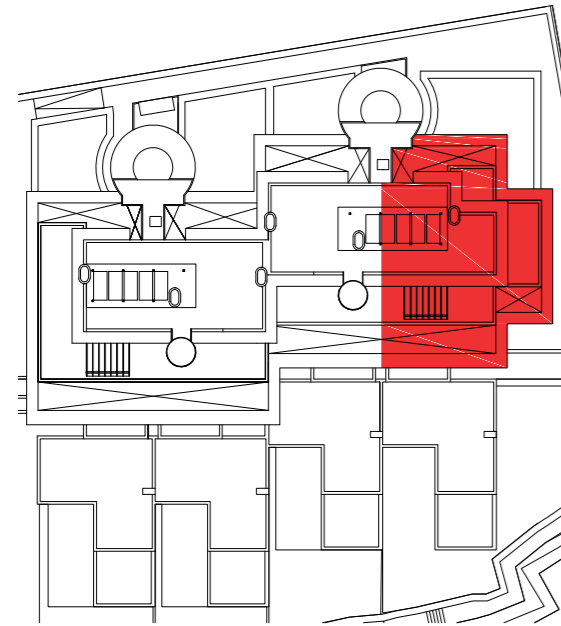
# APARTMENT 702

3 BEDROOMS

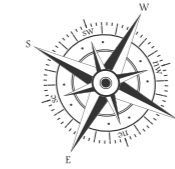
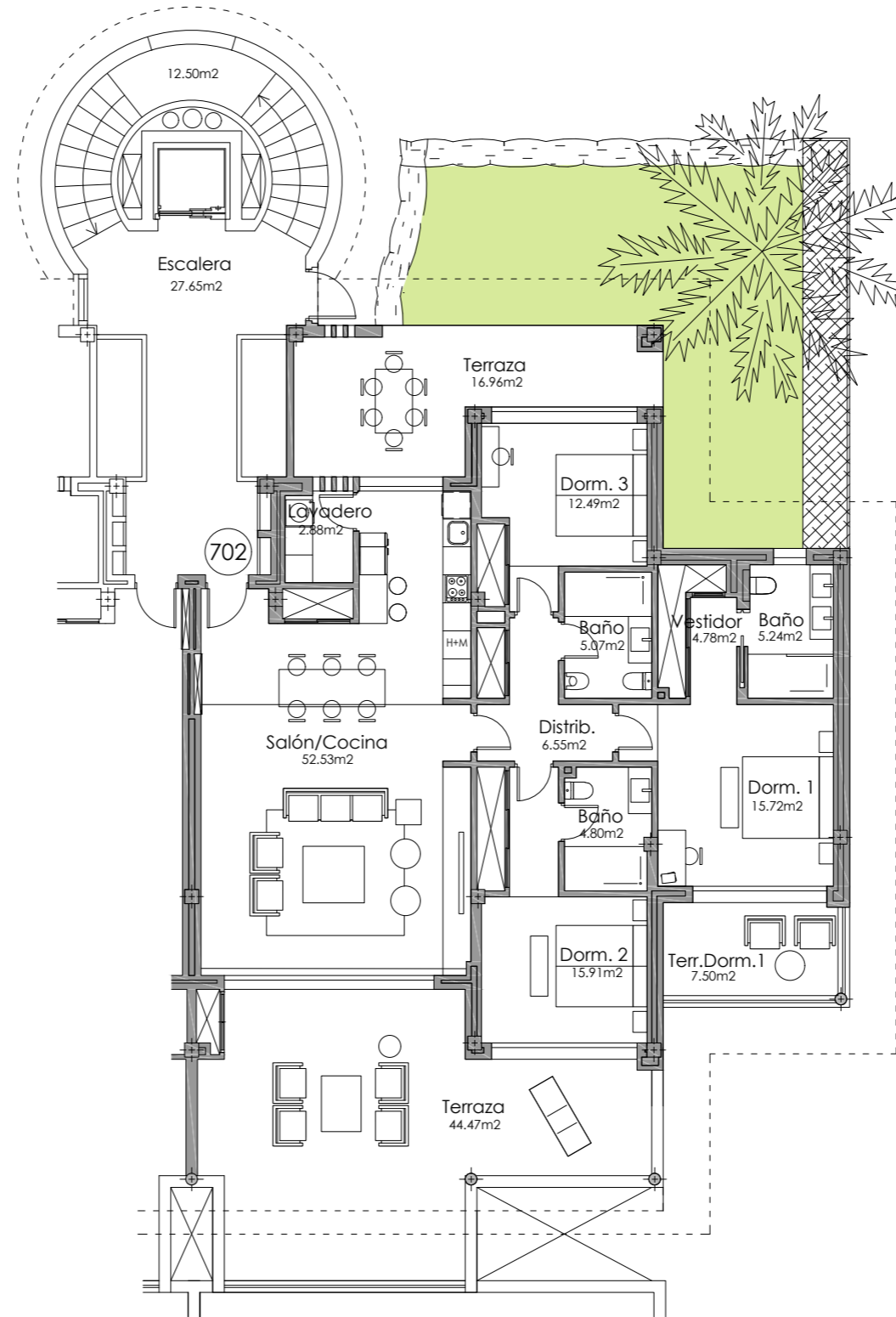
BLOCK C. STAIRCASE 7 GROUND FLOOR



TERRAZAS DE CORTESÍN  
*Sea views*



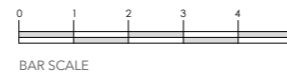
Block C



SECTOR UR-10A "FINCA EL CORTESÍN" CASARES, MÁLAGA

**SURFACES**

Surface of constructed area	
Surface of communal area	
Surface of terrace area	151,55 m <sup>2</sup>
<b>TOTAL SURFACE</b>	<b>6,47 m<sup>2</sup></b>
	77,84 m <sup>2</sup>
	235,86 m <sup>2</sup>
Surface of utilised area	
Surface of utilised terrace area	126,01 m <sup>2</sup>
Surface of utilised garden area	68,93 m <sup>2</sup>
	50,20 m <sup>2</sup>





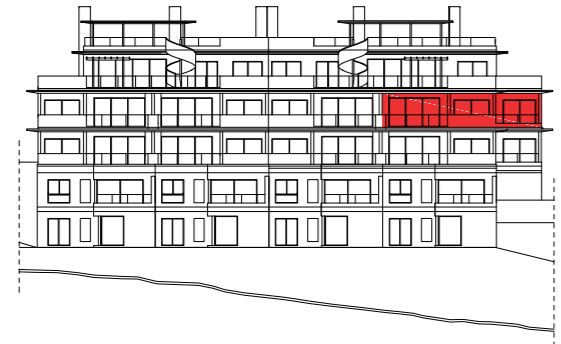
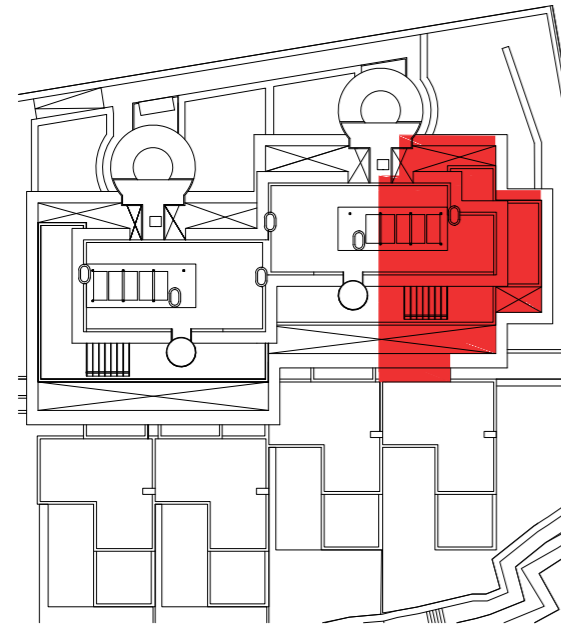
# APARTMENT 712

3 BEDROOMS

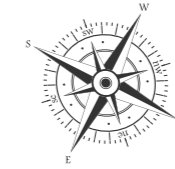
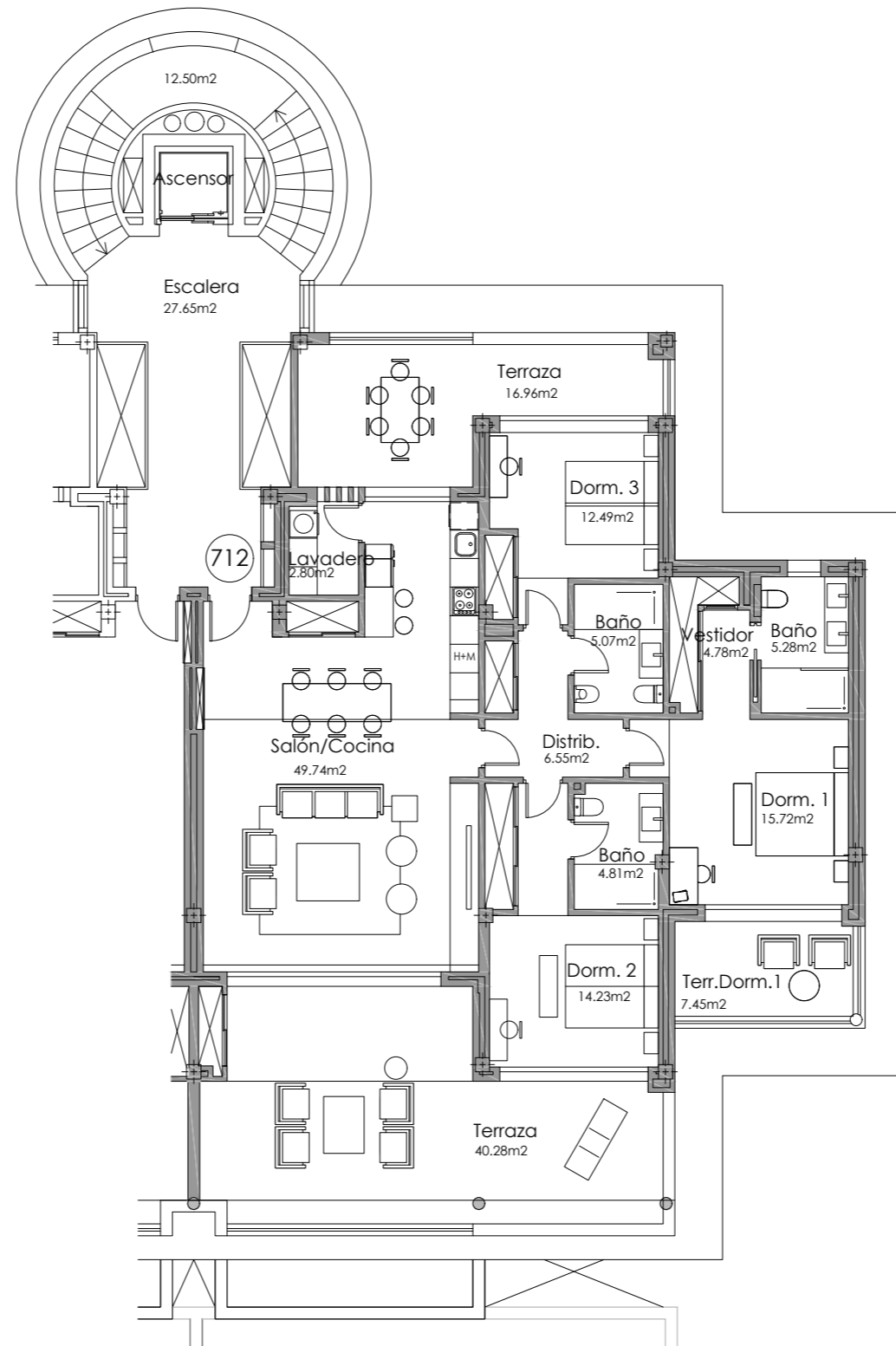
BLOCK C. STAIRCASE 7 FIRST FLOOR



TERRAZAS DE CORTESÍN  
*Sea views*



Block C



SECTOR UR-10A "FINCA EL CORTESÍN" CASARES, MÁLAGA

**SURFACES**

Surface of constructed area	148,61 m <sup>2</sup>
Surface of communal area	6,34 m <sup>2</sup>
Surface of terrace area	72,97 m <sup>2</sup>

**TOTAL SURFACE** 227,92 m<sup>2</sup>

Surface of utilised area	121,51 m <sup>2</sup>
Surface of utilised terrace area	64,69 m <sup>2</sup>





TOWNHOUSES



TERRAZAS DE CORTESÍN  
*Seaviews*



# DUPLEX PENTHOUSE 1

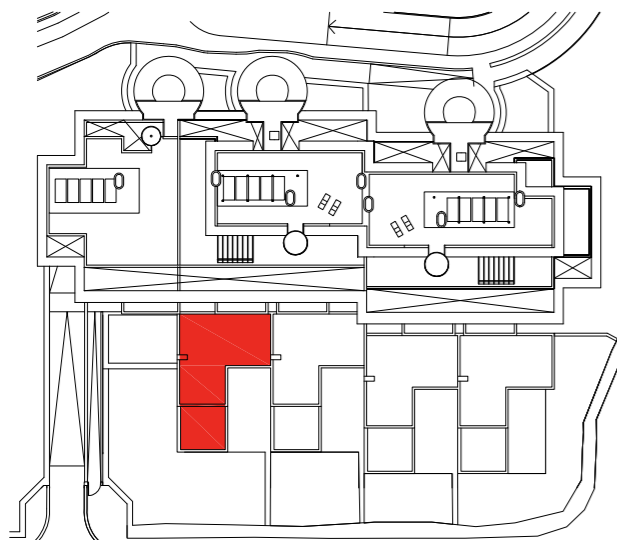
4 BEDROOMS

BLOCK A. STAIRCASE 2 GROUND FLOOR - GARDEN

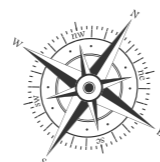
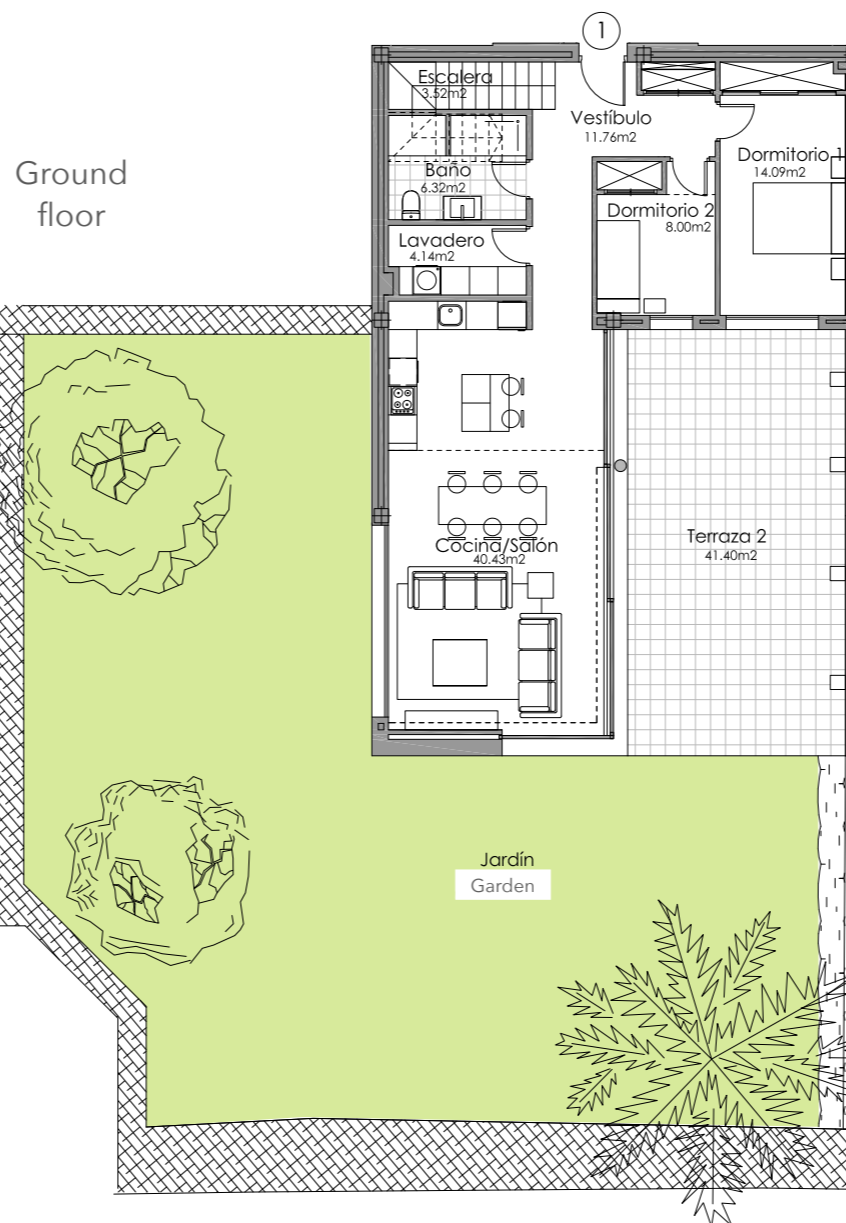


TERRAZAS DE CORTESÍN

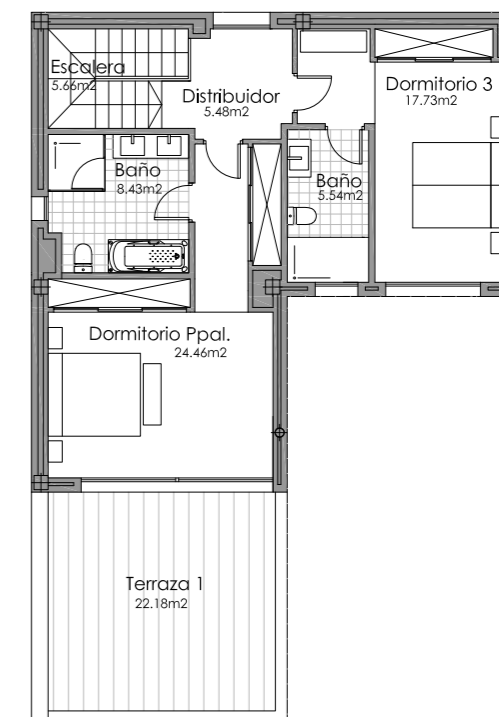
*Seaviews*



Block A



First floor



SECTOR UR-10A "FINCA EL CORTESÍN" CASARES, MÁLAGA

**SURFACES**

Surface of constructed area	184,56 m <sup>2</sup>	Surface of utilised area	155,56 m <sup>2</sup>
Surface of communal area	7,88 m <sup>2</sup>	Surface of utilised terrace area	63,58 m <sup>2</sup>
Surface of terrace area	69,43 m <sup>2</sup>	Surface of utilised garden area	190,44 m <sup>2</sup>
<b>TOTAL SURFACE</b>	<b>261,87 m<sup>2</sup></b>		

# DUPLEX PENTHOUSE 2

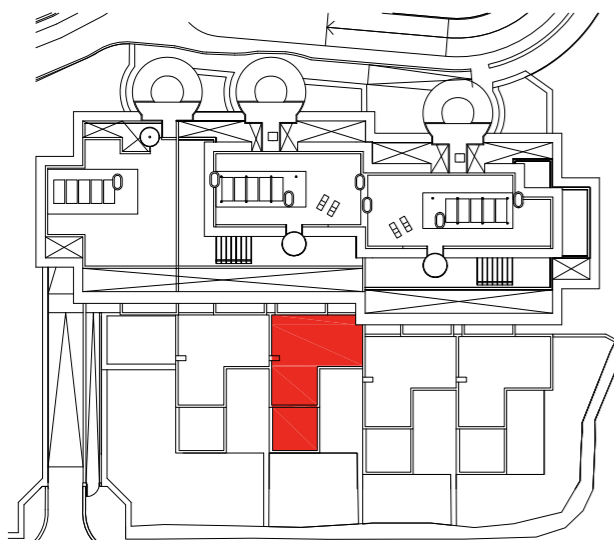
3 BEDROOMS

BLOCK A. STAIRCASE 2 GROUND FLOOR - GARDEN



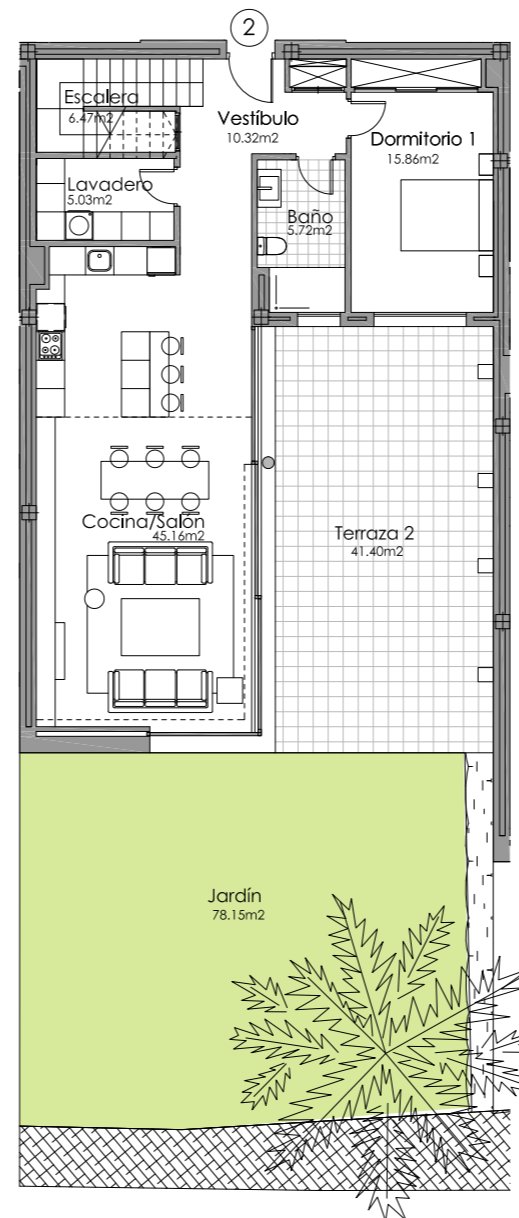
TERRAZAS DE CORTESÍN

*Seaviews*

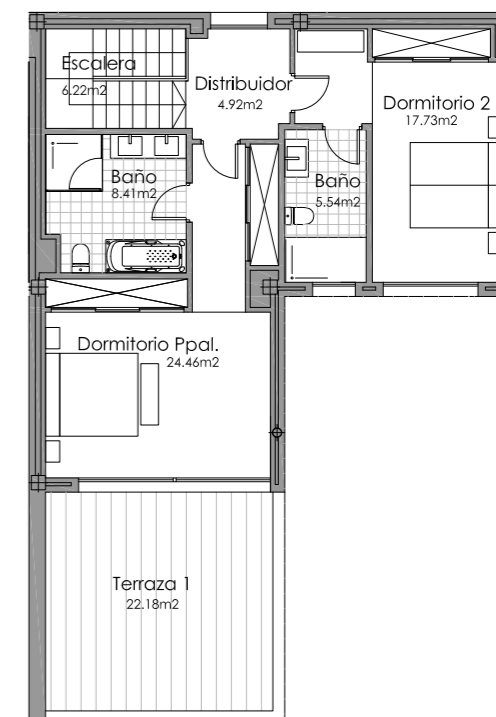


Block A

Ground floor



First floor



SECTOR UR-10A "FINCA EL CORTESÍN" CASARES, MÁLAGA

**SURFACES**

Surface of constructed area	184,56 m <sup>2</sup>	Surface of utilised area	155,84 m <sup>2</sup>
Surface of communal area	7,88 m <sup>2</sup>	Surface of utilised terrace area	63,58 m <sup>2</sup>
Surface of terrace area	69,43 m <sup>2</sup>	Surface of utilised garden area	78,10 m <sup>2</sup>
<b>TOTAL SURFACE</b>	<b>261,87 m<sup>2</sup></b>		



# DUPLEX PENTHOUSE 3

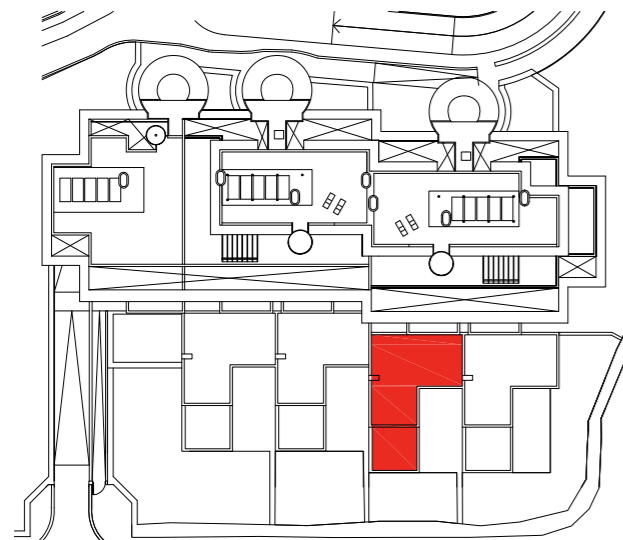
3 BEDROOMS

BLOCK A. STAIRCASE 3 GROUND FLOOR - GARDEN



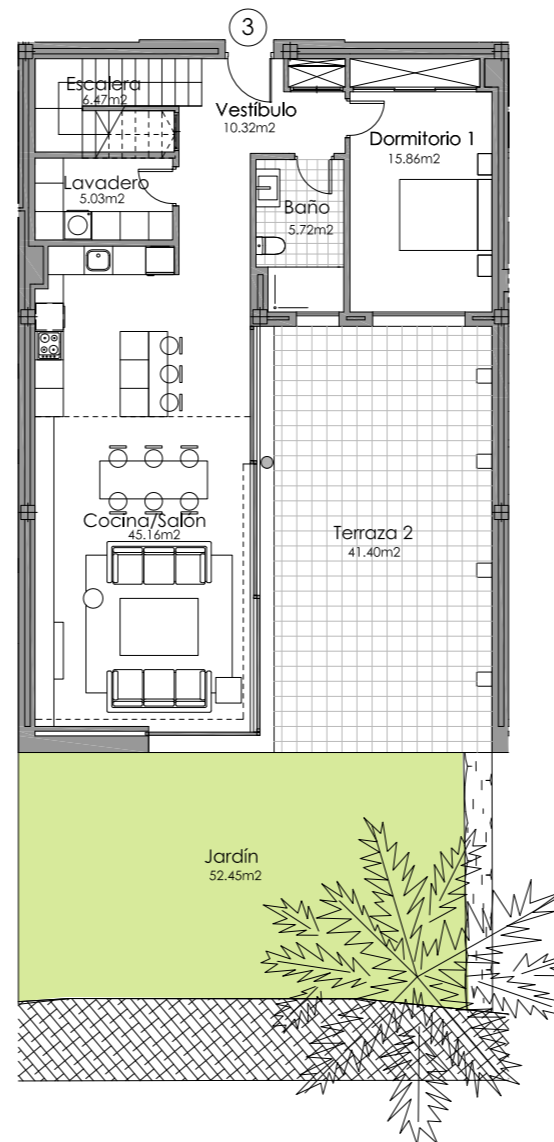
TERRAZAS DE CORTESÍN

*Seaviews*

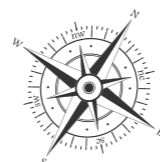
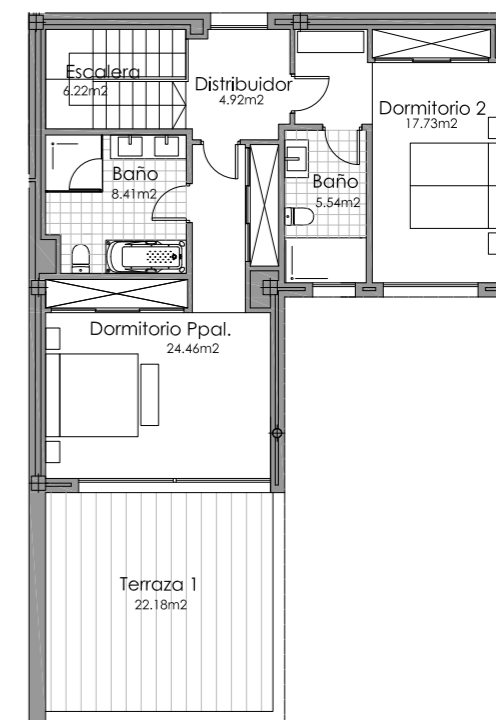


Block A

Ground floor



First floor



SECTOR UR-10A "FINCA EL CORTESÍN" CASARES, MÁLAGA

**SURFACES**

Surface of constructed area	184,56 m <sup>2</sup>	Surface of utilised area	155,84 m <sup>2</sup>
Surface of communal area	7,88 m <sup>2</sup>	Surface of utilised terrace area	63,58 m <sup>2</sup>
Surface of terrace area	69,43 m <sup>2</sup>	Surface of utilised garden area	52,45 m <sup>2</sup>
<b>TOTAL SURFACE</b>	<b>261,87 m<sup>2</sup></b>		

# DUPLEX PENTHOUSE 4

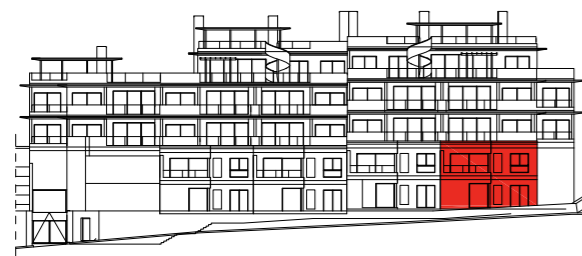
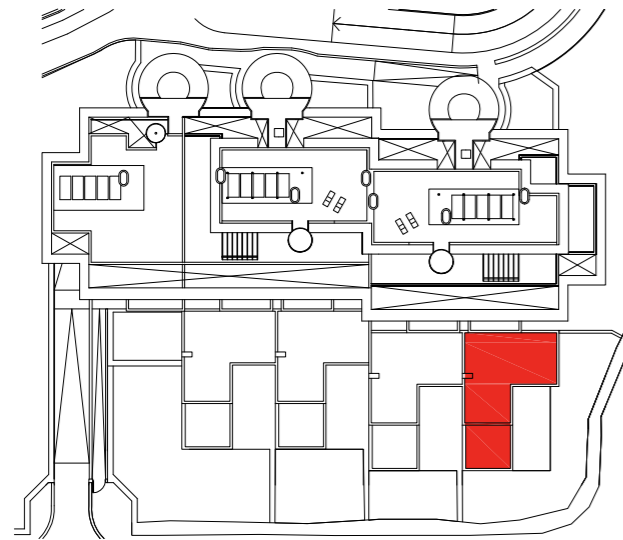
4 BEDROOMS

BLOCK A. STAIRCASE 3 GROUND FLOOR - GARDEN

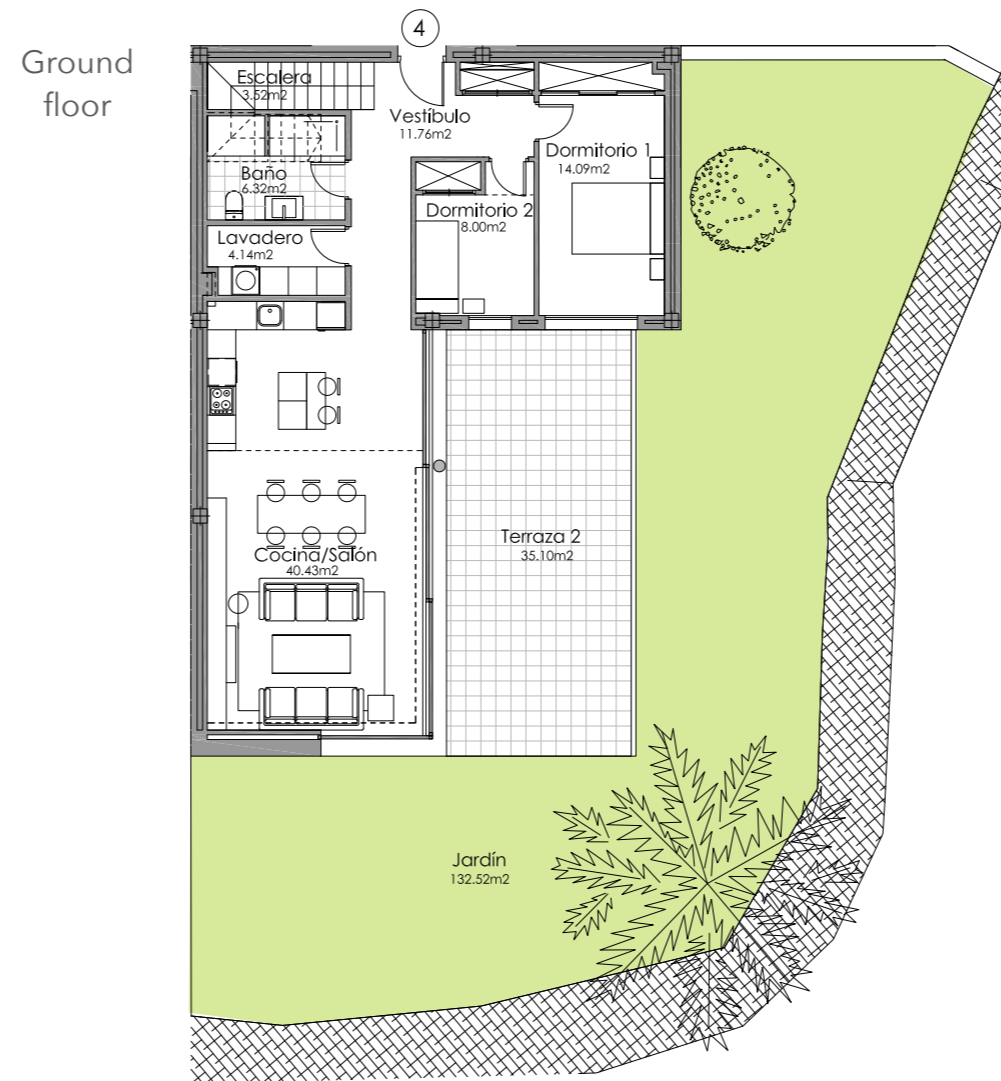


TERRAZAS DE CORTESÍN

*Seaview*

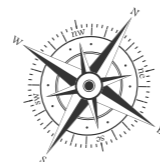
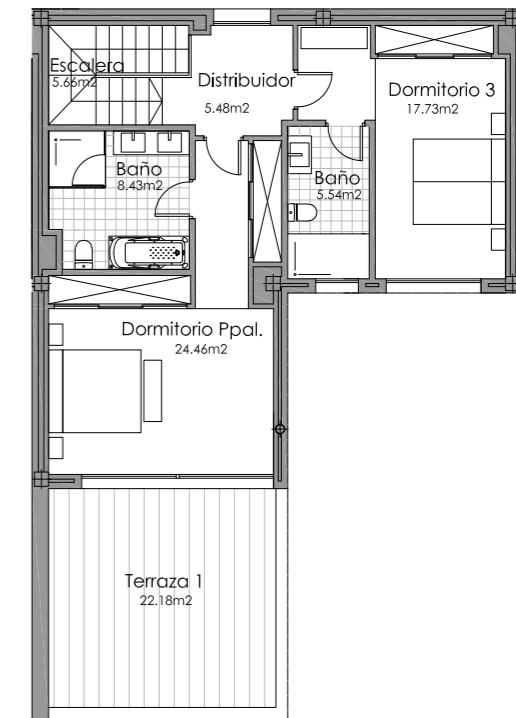


Block A



Ground floor

First floor



SECTOR UR-10A "FINCA EL CORTESÍN" CASARES, MÁLAGA

**SURFACES**

Surface of constructed area	184,56 m <sup>2</sup>	Surface of utilised area	155,56 m <sup>2</sup>
Surface of communal area	7,88 m <sup>2</sup>	Surface of utilised terrace area	57,28 m <sup>2</sup>
Surface of terrace area	62,30 m <sup>2</sup>	Surface of utilised garden area	132,52 m <sup>2</sup>
<b>TOTAL SURFACE</b>	<b>254,74 m<sup>2</sup></b>		



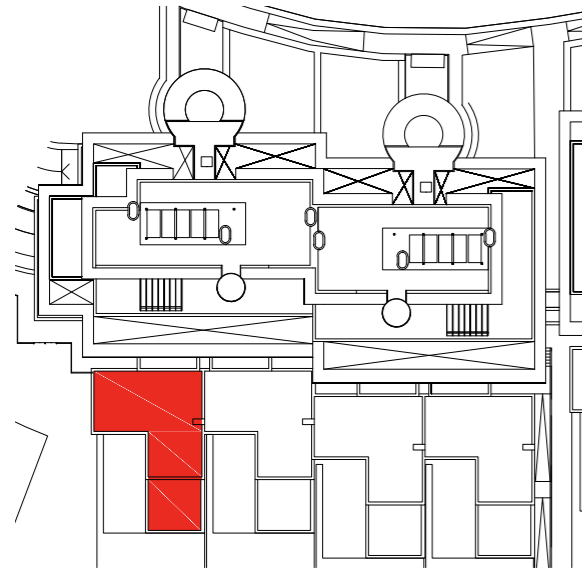
# DUPLEX PENTHOUSE 5

4 BEDROOMS

BLOCK A. STAIRCASE 4 GROUND FLOOR - GARDEN

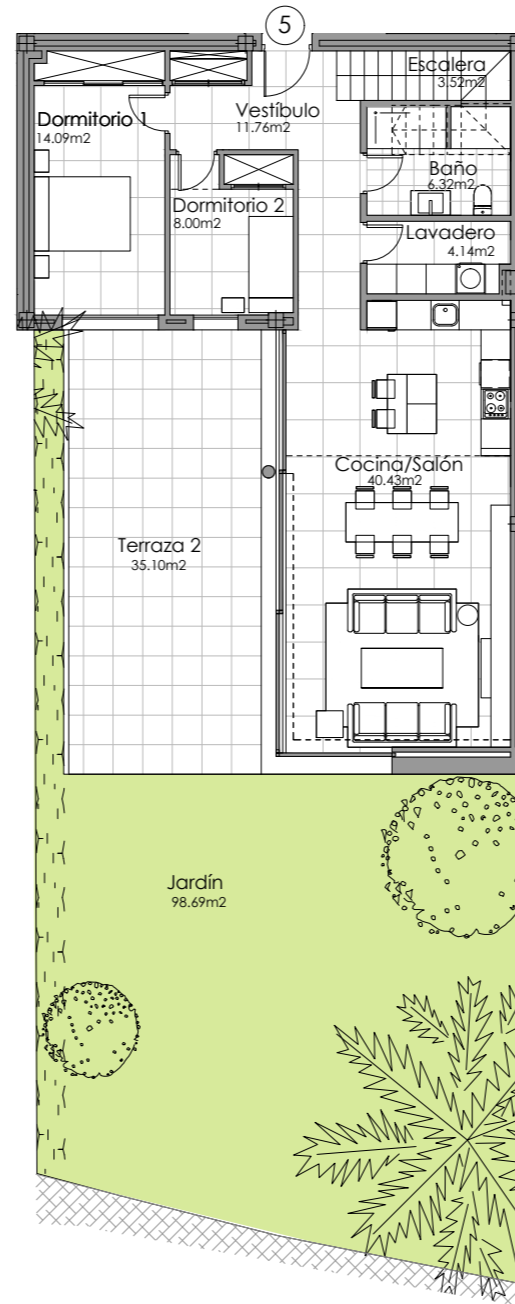


TERRAZAS DE CORTESÍN  
*Seaview*

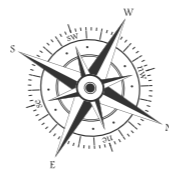
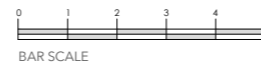
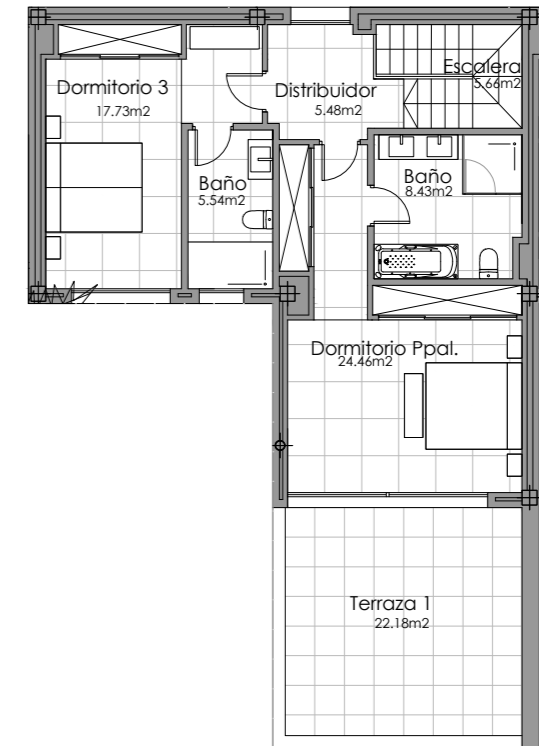


Block B

Ground floor



First floor



SECTOR UR-10A "FINCA EL CORTESÍN" CASARES, MÁLAGA

**SURFACES**

Surface of constructed area	184,56 m <sup>2</sup>	Surface of utilised area	155,56 m <sup>2</sup>
Surface of communal area	7,88 m <sup>2</sup>	Surface of utilised terrace area	57,28 m <sup>2</sup>
Surface of terrace area	62,30 m <sup>2</sup>	Surface of utilised garden area	98,69 m <sup>2</sup>
<b>TOTAL SURFACE</b>	<b>254,74 m<sup>2</sup></b>		

# DUPLEX PENTHOUSE 6

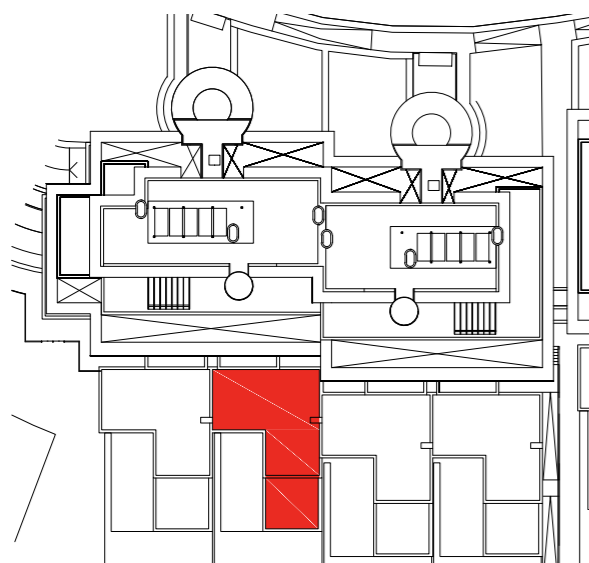
3 BEDROOMS

BLOCK B. STAIRCASE 4 GROUND FLOOR - GARDEN



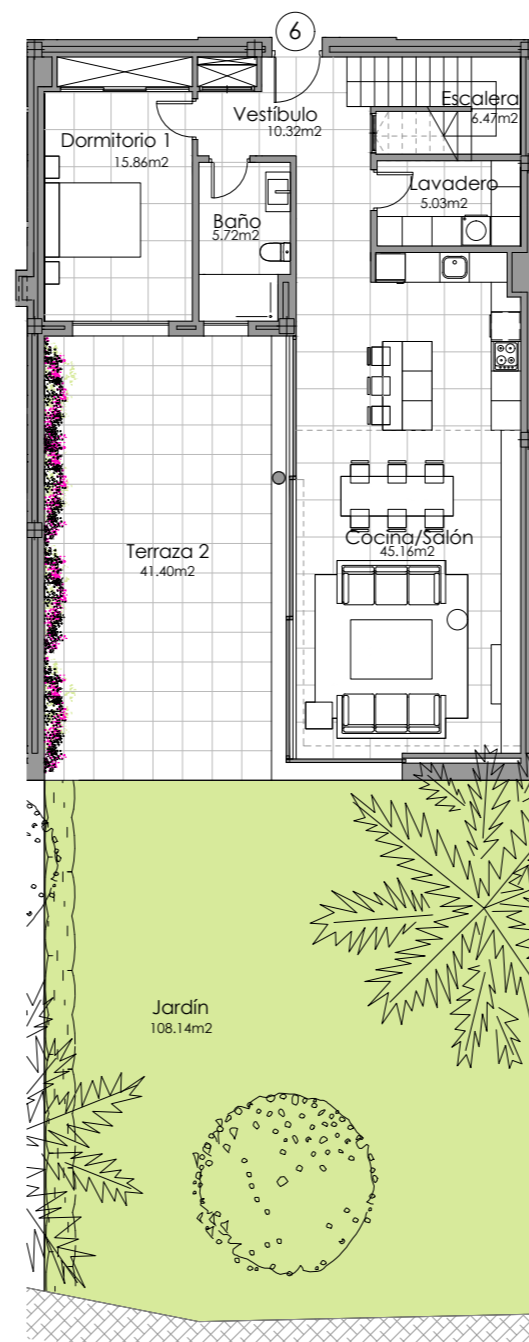
TERRAZAS DE CORTESÍN

*Seaviews*

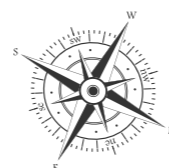
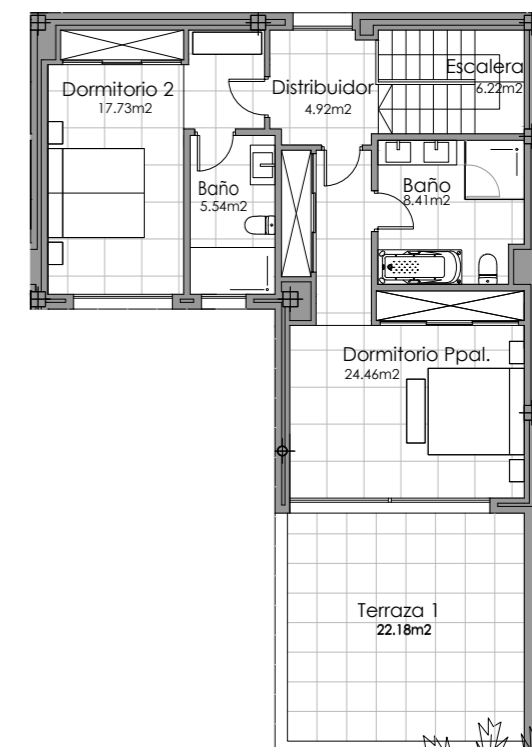


Block B

Ground floor



First floor



SECTOR UR-10A "FINCA EL CORTESÍN" CASARES, MÁLAGA

**SURFACES**

Surface of constructed area	184,56 m <sup>2</sup>	Surface of utilised area	155,84 m <sup>2</sup>
Surface of communal area	7,88 m <sup>2</sup>	Surface of utilised terrace area	63,58 m <sup>2</sup>
Surface of terrace area	69,43 m <sup>2</sup>	Surface of utilised garden area	108,14 m <sup>2</sup>
<b>TOTAL SURFACE</b>	<b>261,87 m<sup>2</sup></b>		



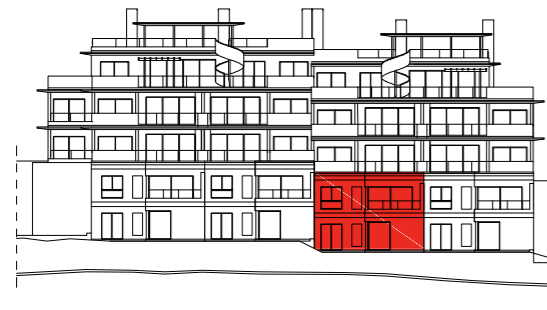
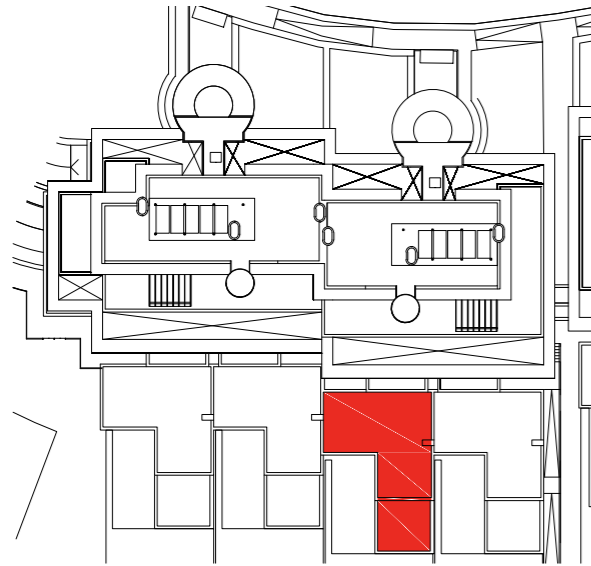
# DUPLEX PENTHOUSE 7

3 BEDROOMS

BLOCK B. STAIRCASE 5 GROUND FLOOR - GARDEN

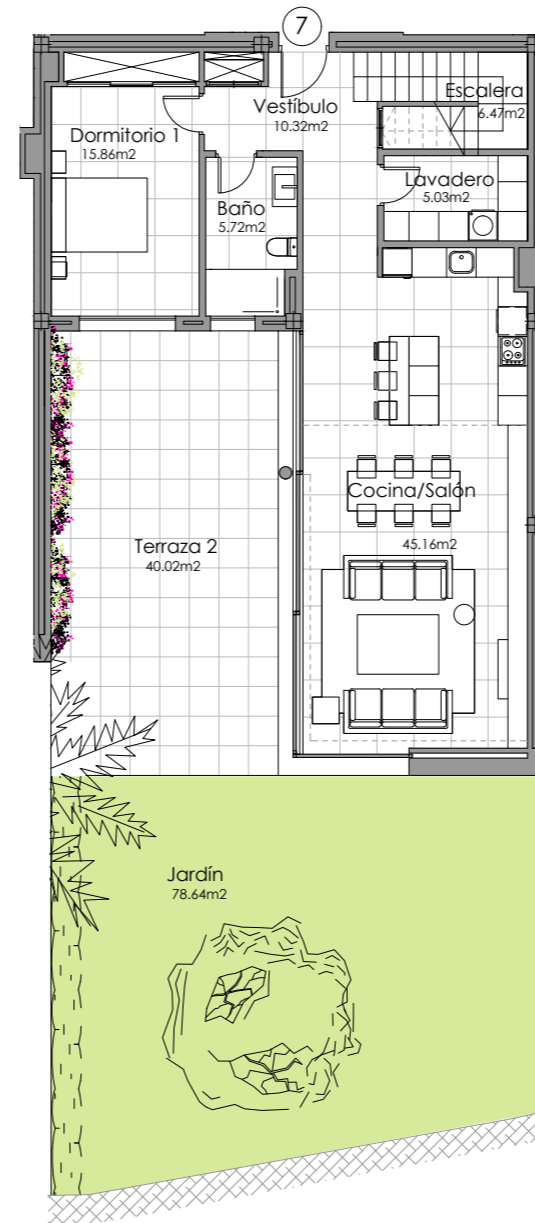


TERRAZAS DE CORTESÍN  
*Seaviews*

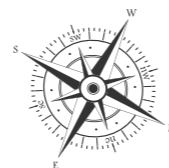
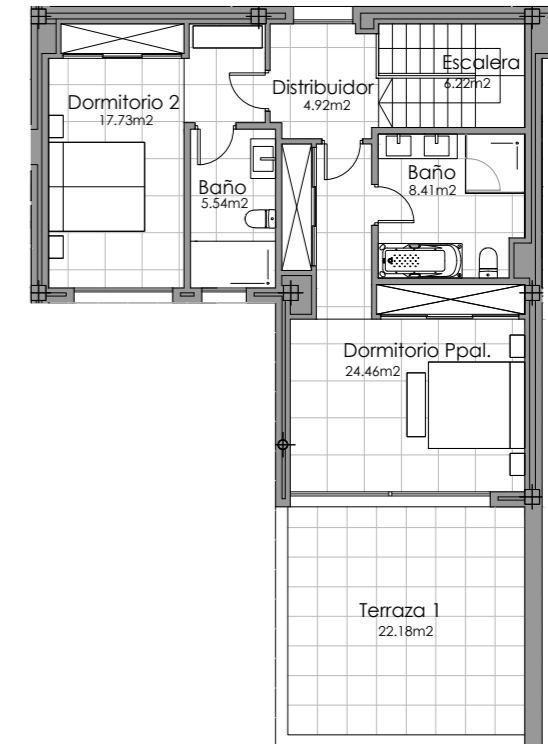


Block B

Ground floor



First floor



SECTOR UR-10A "FINCA EL CORTESÍN" CASARES, MÁLAGA

**SURFACES**

Surface of constructed area	184,56 m <sup>2</sup>	Surface of utilised area	155,84 m <sup>2</sup>
Surface of communal area	7,88 m <sup>2</sup>	Surface of utilised terrace area	62,20 m <sup>2</sup>
Surface of terrace area	67,69 m <sup>2</sup>	Surface of utilised garden area	78,64 m <sup>2</sup>
<b>TOTAL SURFACE</b>	<b>260,13 m<sup>2</sup></b>		

# DUPLEX PENTHOUSE 8

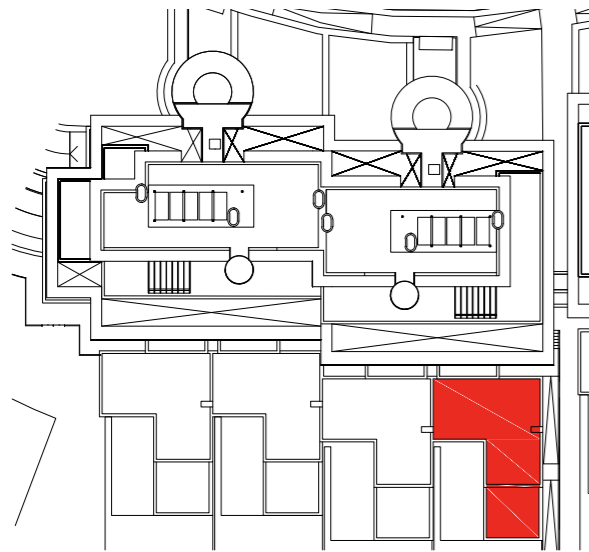
3 BEDROOMS

BLOCK B. STAIRCASE 5 GROUND FLOOR - GARDEN



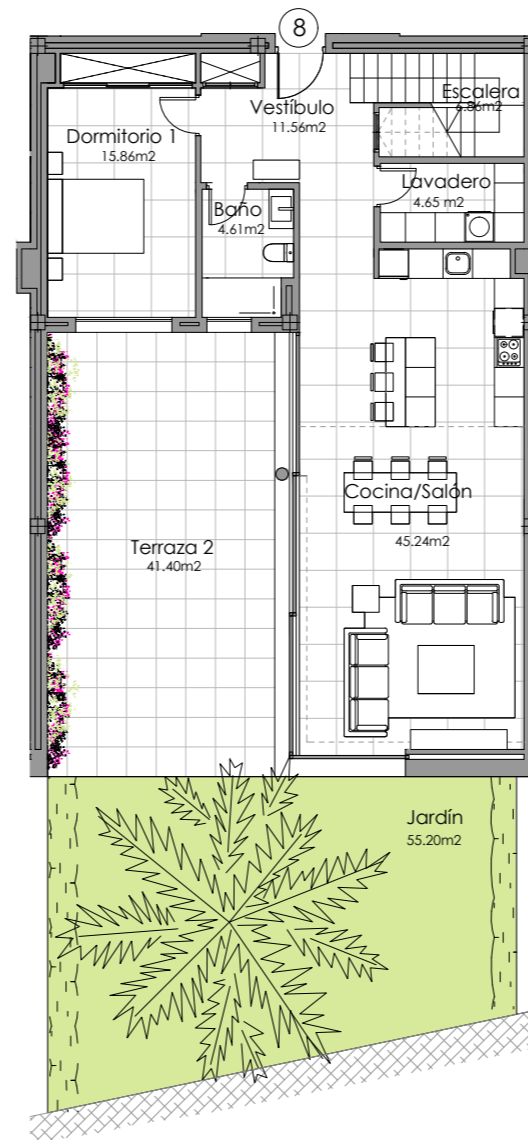
TERRAZAS DE CORTESÍN

*Seaview*

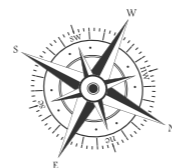
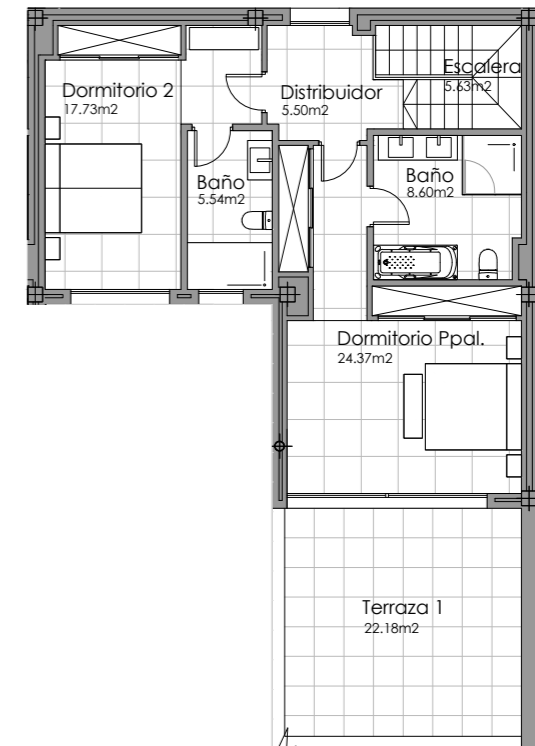


Block B

Ground floor



First floor



SECTOR UR-10A "FINCA EL CORTESÍN" CASARES, MÁLAGA

**SURFACES**

Surface of constructed area	184,56 m <sup>2</sup>	Surface of utilised area	156,15 m <sup>2</sup>
Surface of communal area	7,88 m <sup>2</sup>	Surface of utilised terrace area	63,14 m <sup>2</sup>
Surface of terrace area	69,43 m <sup>2</sup>	Surface of utilised garden area	55,20 m <sup>2</sup>
<b>TOTAL SURFACE</b>	<b>261,87 m<sup>2</sup></b>		



# DUPLEX PENTHOUSE 9

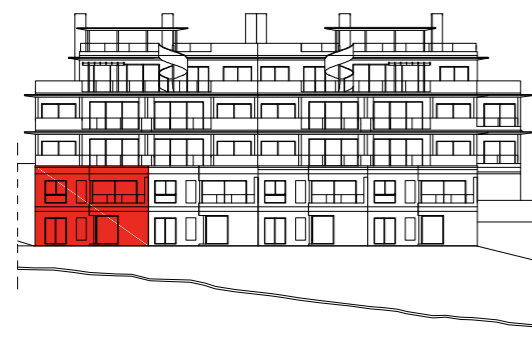
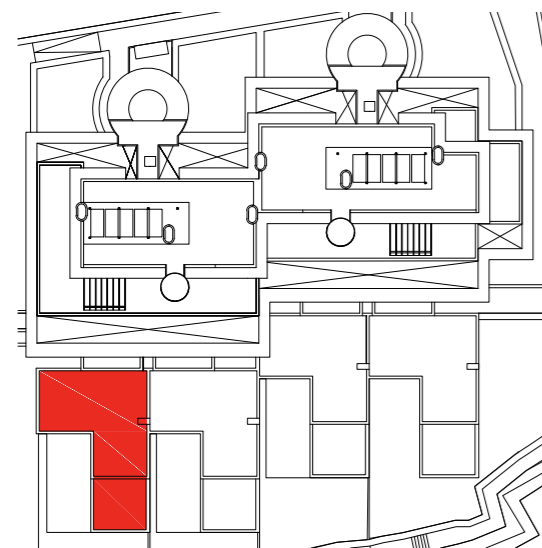
3 BEDROOMS

BLOCK C. STAIRCASE 6 GROUND FLOOR - GARDEN

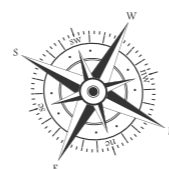
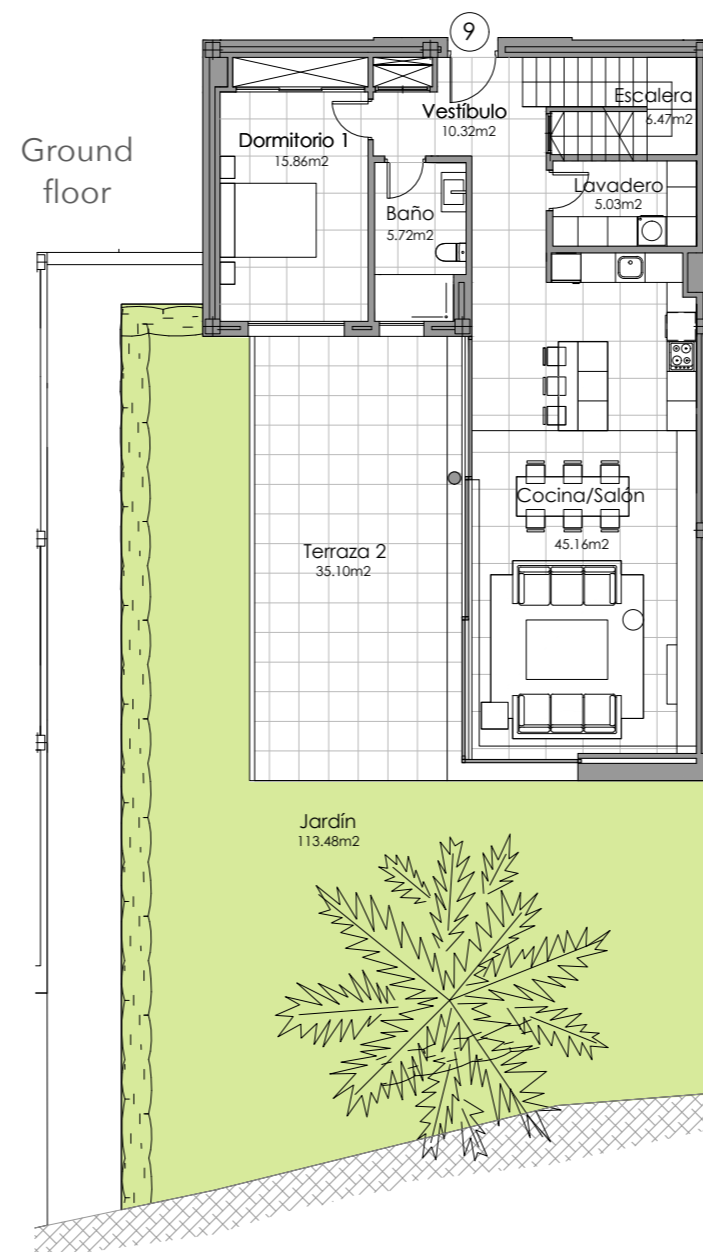


TERRAZAS DE CORTESÍN

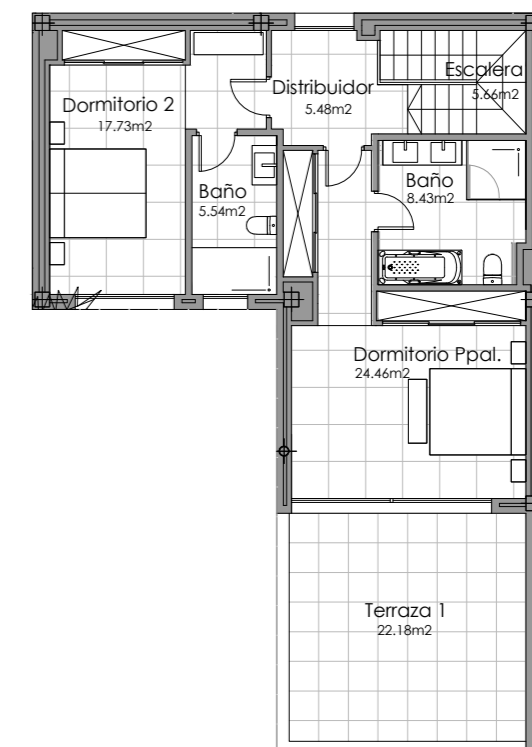
*Seaview*



Block C



First floor



SECTOR UR-10A "FINCA EL CORTESÍN" CASARES, MÁLAGA

**SURFACES**

Surface of constructed area	184,56 m <sup>2</sup>	Surface of utilised area	155,86 m <sup>2</sup>
Surface of communal area	7,88 m <sup>2</sup>	Surface of utilised terrace area	57,28 m <sup>2</sup>
Surface of terrace area	62,30 m <sup>2</sup>	Surface of utilised garden area	113,48 m <sup>2</sup>
<b>TOTAL SURFACE</b>	<b>254,74 m<sup>2</sup></b>		

# DUPLEX PENTHOUSE 10

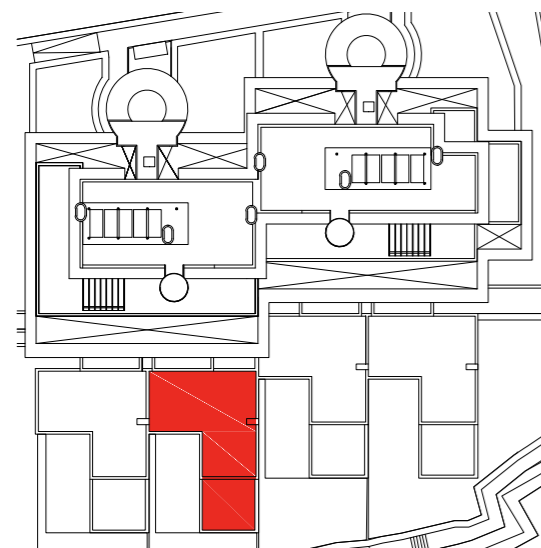
3 BEDROOMS

BLOCK C. STAIRCASE 6 GROUND FLOOR - GARDEN



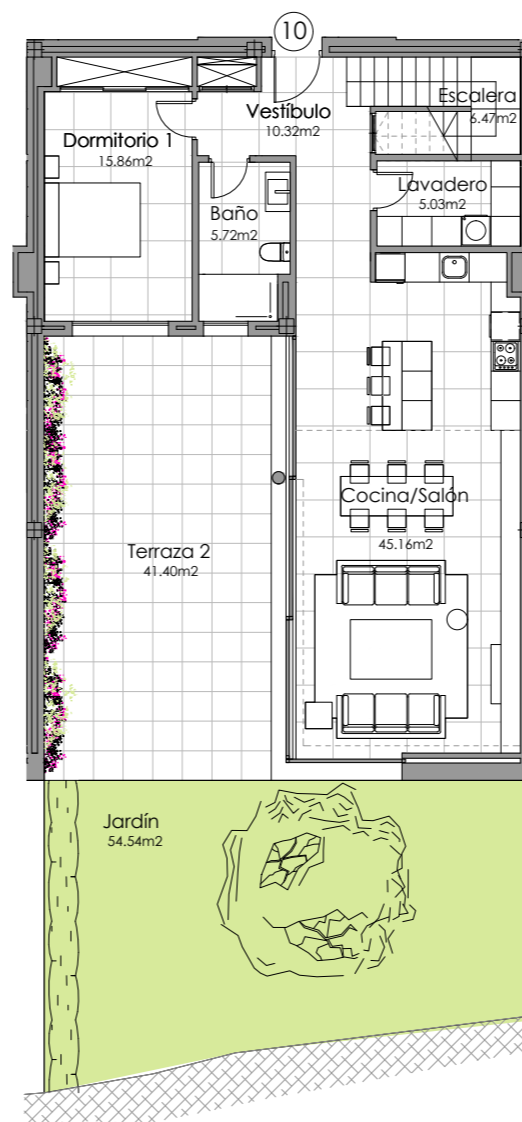
TERRAZAS DE CORTESÍN

*Seaview*

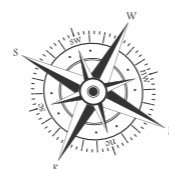
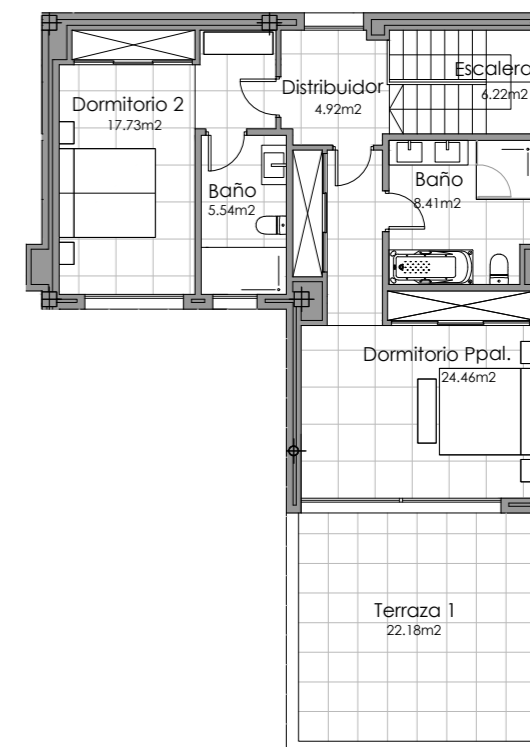


Block C

Ground floor



First floor



SECTOR UR-10A "FINCA EL CORTESÍN" CASARES, MÁLAGA

**SURFACES**

Surface of constructed area	184,56 m <sup>2</sup>	Surface of utilised area	155,84 m <sup>2</sup>
Surface of communal area	7,88 m <sup>2</sup>	Surface of utilised terrace area	63,58 m <sup>2</sup>
Surface of terrace area	69,43 m <sup>2</sup>	Surface of utilised garden area	54,54 m <sup>2</sup>
<b>TOTAL SURFACE</b>	<b>261,87 m<sup>2</sup></b>		

# DUPLEX PENTHOUSE 11

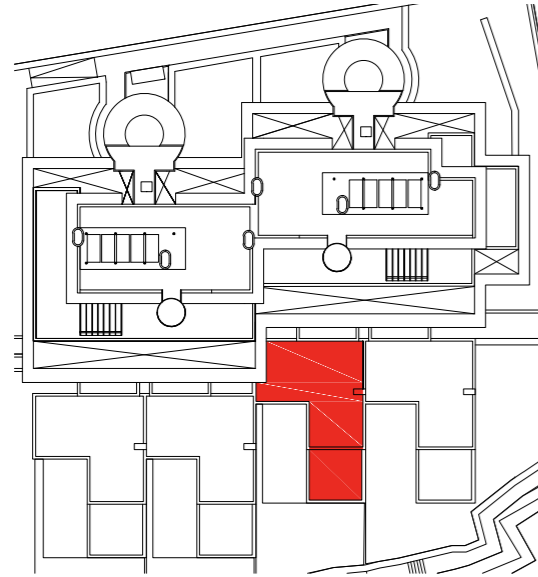
3 BEDROOMS

BLOCK C. STAIRCASE 7 GROUND FLOOR - GARDEN



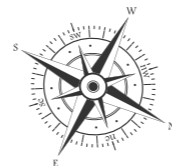
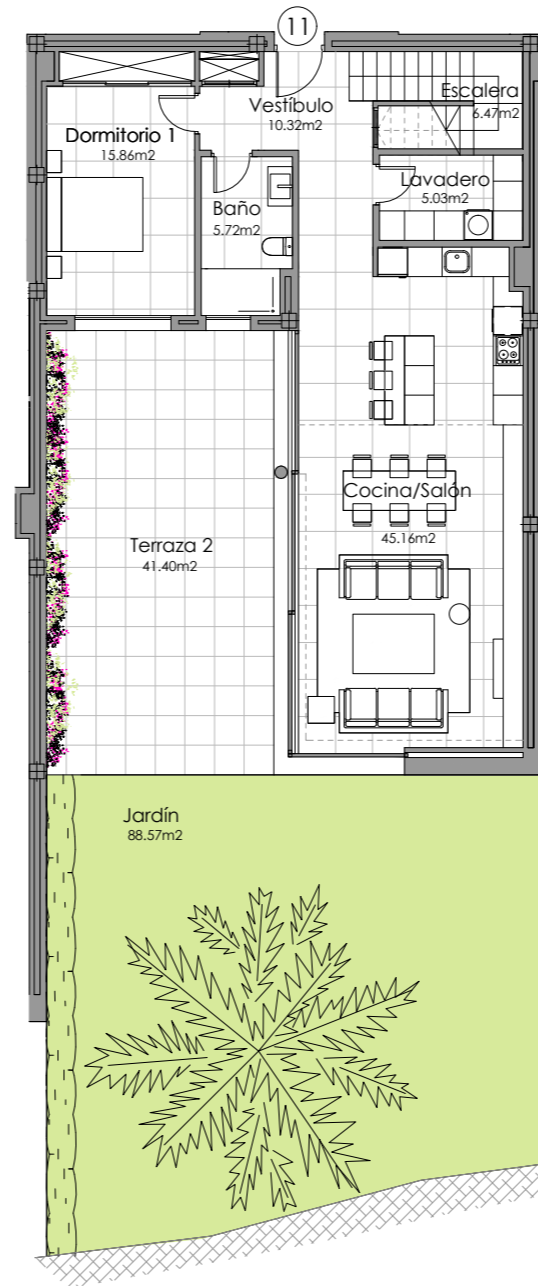
TERRAZAS DE CORTESÍN

*Seaviews*

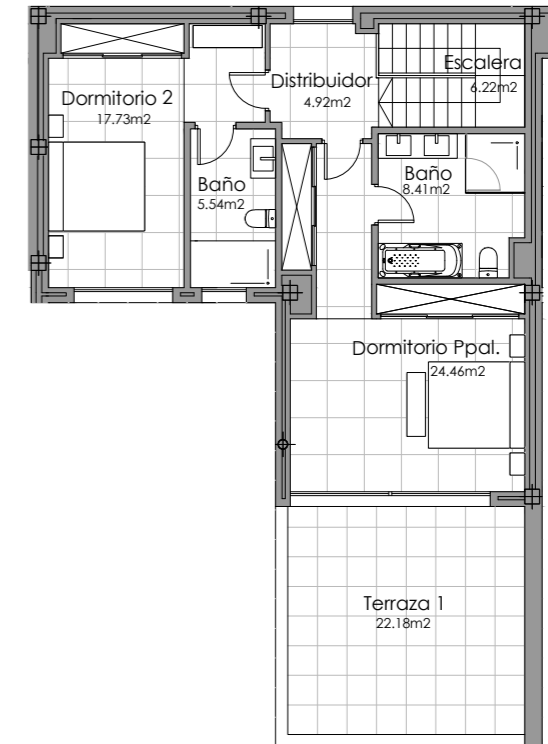


Block C

Ground floor



First floor



SECTOR UR-10A "FINCA EL CORTESÍN" CASARES, MÁLAGA

**SURFACES**

Surface of constructed area	184,56 m <sup>2</sup>	Surface of utilised area	155,84 m <sup>2</sup>
Surface of communal area	7,88 m <sup>2</sup>	Surface of utilised terrace area	63,58 m <sup>2</sup>
Surface of terrace area	69,43 m <sup>2</sup>	Surface of utilised garden area	88,57 m <sup>2</sup>
<b>TOTAL SURFACE</b>	<b>261,87 m<sup>2</sup></b>		



# DUPLEX PENTHOUSE 12

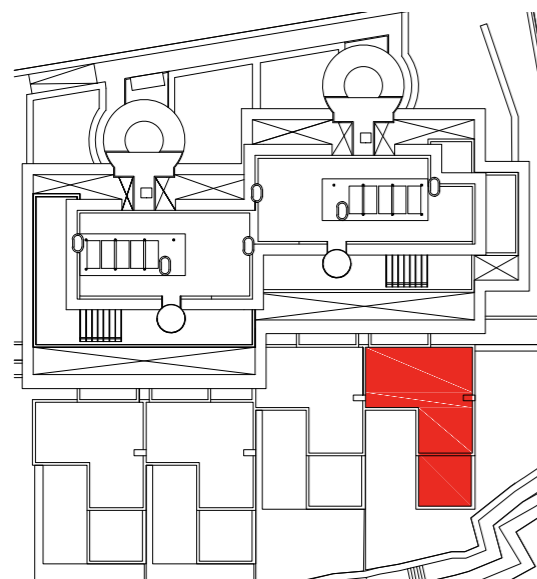
3 BEDROOMS

BLOCK C. STAIRCASE 7 GROUND FLOOR - GARDEN



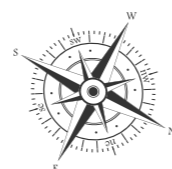
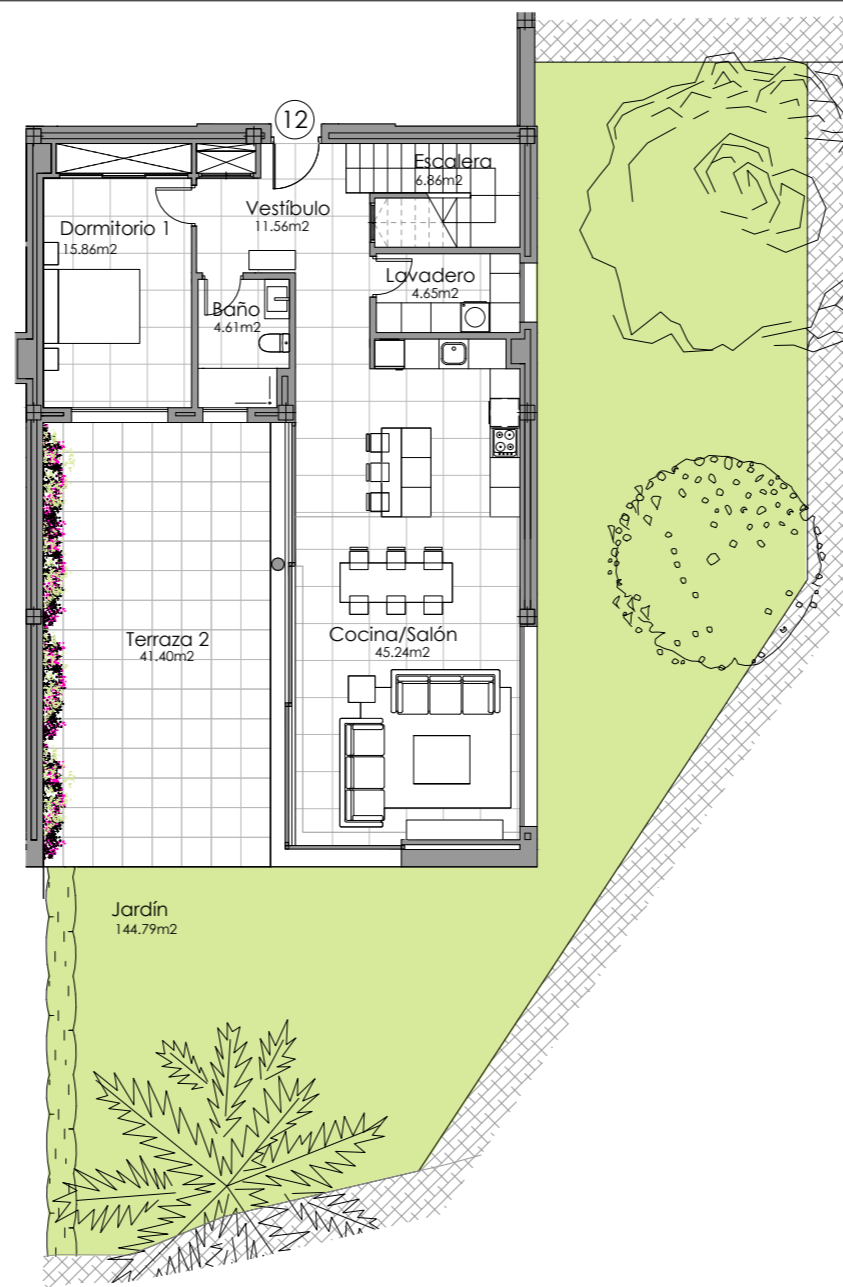
TERRAZAS DE CORTESÍN

*Seaviews*

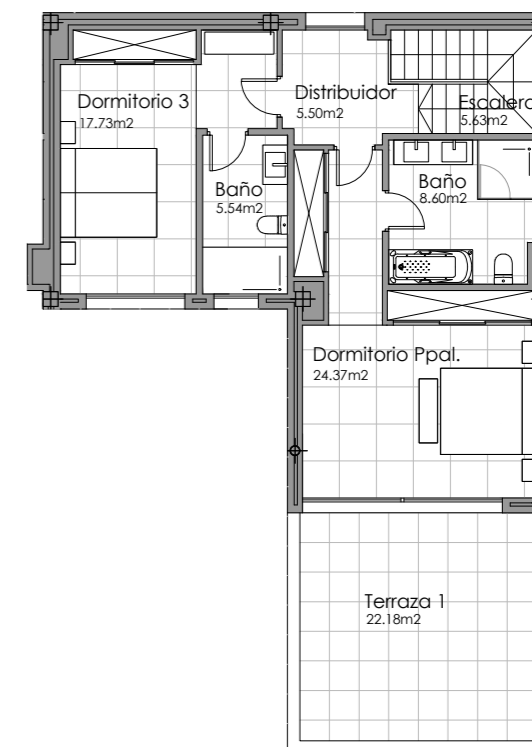


Block C

Ground floor



First floor



SECTOR UR-10A "FINCA EL CORTESÍN" CASARES, MÁLAGA

**SURFACES**

Surface of constructed area	184,56 m <sup>2</sup>	Surface of utilised area	156,15 m <sup>2</sup>
Surface of communal area	7,88 m <sup>2</sup>	Surface of utilised terrace area	63,58 m <sup>2</sup>
Surface of terrace area	69,43 m <sup>2</sup>	Surface of utilised garden area	144,79 m <sup>2</sup>
<b>TOTAL SURFACE</b>	<b>261,87 m<sup>2</sup></b>		



TERRAZAS DE CORTESÍN  
*Seaviews*

In compliance with the DECREE of the Junta de Andalucía 218/2005, the useful surface of exterior floor spaces which are for the private use of the dwellings means 50% of the actual surface to a maximum of 10% the useful enclosed surface.

Information, computer graphics and graphic documentation that appear in this brochure are indicative, finishes may include extras not included are subject to changes arising from final project and its construction. All the furniture is merely decorative. The other information referred to in R.D.218/2005 of the Government of Andalusia, is available in our offices for consultation.



TERRAZAS DE CORTESÍN  
*Sea views*



**TUSCANY**  
REALTY GROUP

T. +34 951 635 631  
info@tuscanycgroup.es  
tuscanycgroup.es

**exacon**  
*smart* LIVING

*smart* LIVING ...for Smart People

